



# SZABO SCANDIC

Part of Europa Biosite

## Produktinformation



Forschungsprodukte & Biochemikalien



Zellkultur & Verbrauchsmaterial



Diagnostik & molekulare Diagnostik



Laborgeräte & Service

Weitere Information auf den folgenden Seiten!  
See the following pages for more information!



### Lieferung & Zahlungsart

siehe unsere [Liefer- und Versandbedingungen](#)

### Zuschläge

- Mindermengenzuschlag
- Trockeneiszuschlag
- Gefahrgutzuschlag
- Expressversand

### SZABO-SCANDIC HandelsgmbH

Quellenstraße 110, A-1100 Wien

T. +43(0)1 489 3961-0

F. +43(0)1 489 3961-7

[mail@szabo-scandic.com](mailto:mail@szabo-scandic.com)

[www.szabo-scandic.com](http://www.szabo-scandic.com)

[linkedin.com/company/szaboscandic](https://www.linkedin.com/company/szaboscandic) 

## MMP1 (Human) IP-WB Antibody Pair

Catalog # : H00004312-PW1

規格 : [ 1 Set ]

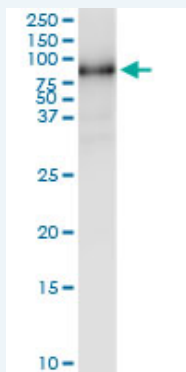
[List All](#)

### Specification

**Product Description:** This IP-WB antibody pair set comes with one antibody for immunoprecipitation and another to detect the precipitated protein in western blot.

**Reactivity:** Human

**Quality Control Testing:** Immunoprecipitation-Western Blot (IP-WB)



Immunoprecipitation of MMP1 transfected lysate using rabbit polyclonal anti-MMP1 and Protein A Magnetic Bead ([U0007](#)), and immunoblotted with mouse purified polyclonal anti-MMP1.

**Supplied Product:** Antibody pair set content:  
 1. Antibody pair for IP: rabbit polyclonal anti-MMP1 (300 ul)  
 2. Antibody pair for WB: mouse purified polyclonal anti-MMP1 (50 ug)

**Storage Instruction:** Store reagents of the antibody pair set at -20°C or lower. Please aliquot to avoid repeated freeze thaw cycle. Reagents should be returned to -20°C storage immediately after use.

**MSDS:**  [Download](#)

### Applications

Immunoprecipitation-Western Blot

 [Protocol Download](#)

### Gene Information

**Entrez GeneID:** [4312](#)

**Gene Name:** MMP1

**Gene Alias:** CLG, CLGN

**Gene Description:** matrix metalloproteinase 1 (interstitial collagenase)

**Omim ID:** [120353](#), [606963](#)

**Gene Ontology:** [Hyperlink](#)

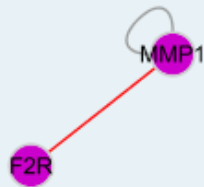
### Application Image

Immunoprecipitation-Western Blot

**Gene Summary:** Proteins of the matrix metalloproteinase (MMP) family are involved in the breakdown of extracellular matrix in normal physiological processes, such as embryonic development, reproduction, and tissue remodeling, as well as in disease processes, such as arthritis and metastasis. Most MMP's are secreted as inactive proproteins which are activated when cleaved by extracellular proteinases. This gene encodes a secreted enzyme which breaks down the interstitial collagens, types I, II, and III. The gene is part of a cluster of MMP genes which localize to chromosome 11q22.3. Alternative splicing results in multiple transcript variants.[provided by RefSeq]

**Other Designations:** fibroblast collagenase,interstitial collagenase,matrix metalloprotease 1,matrix metalloproteinase 1,matrix metalloproteinase 1 (interstitial collagenase)

### Interactome



### Gene Pathway

[Bladder cancer](#) [Pathways in cancer](#) [PPAR signaling pathway](#)

### Related Disease

[Adenocarcinoma](#) [Adenomatous Polyps](#) [Aggressive Periodontitis](#) [Airway Obstruction](#)  
[alpha 1-Antitrypsin Deficiency](#) [Alpha-1-antitrypsin deficiency](#) [Alveolar Bone Loss](#)  
[Alzheimer Disease](#) [Alzheimer disease](#) [Amyotrophic Lateral Sclerosis](#)  
[Amyotrophic lateral sclerosis](#) [Anoxia](#) [Aortic Aneurysm, Abdominal](#) [Arthritis, Rheumatoid](#)  
[Asthma](#) [Asthma](#) [Astrocytoma](#) [Atherosclerosis](#) [Atherosclerosis](#)

... see more

[服務條款](#) | [隱私權政策](#) | [著作及商標](#) | [網站地圖](#)

©2016 亞諾法生技股份有限公司 Abnova Corporation. 版權所有.