



SZABO SCANDIC

Part of Europa Biosite

Produktinformation



Forschungsprodukte & Biochemikalien



Zellkultur & Verbrauchsmaterial



Diagnostik & molekulare Diagnostik



Laborgeräte & Service

Weitere Information auf den folgenden Seiten!
See the following pages for more information!



Lieferung & Zahlungsart

siehe unsere [Liefer- und Versandbedingungen](#)

Zuschläge

- Mindermengenzuschlag
- Trockeneiszuschlag
- Gefahrgutzuschlag
- Expressversand

SZABO-SCANDIC HandelsgmbH

Quellenstraße 110, A-1100 Wien

T. +43(0)1 489 3961-0

F. +43(0)1 489 3961-7

mail@szabo-scandic.com

www.szabo-scandic.com

[linkedin.com/company/szaboscandic](https://www.linkedin.com/company/szaboscandic) 

MMP8 (Human) IP-WB Antibody Pair

Catalog # : H00004317-PW1

規格 : [1 Set]

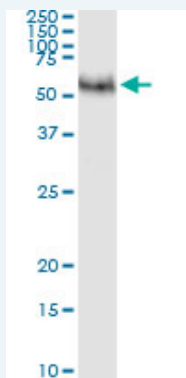
[List All](#)

Specification

Product Description: This IP-WB antibody pair set comes with one antibody for immunoprecipitation and another to detect the precipitated protein in western blot.

Reactivity: Human

Quality Control Testing: Immunoprecipitation-Western Blot (IP-WB)



Immunoprecipitation of MMP8 transfected lysate using rabbit polyclonal anti-MMP8 and Protein A Magnetic Bead ([U0007](#)), and immunoblotted with mouse purified polyclonal anti-MMP8.

Supplied Product: Antibody pair set content:
1. Antibody pair for IP: rabbit polyclonal anti-MMP8 (300 ul)
2. Antibody pair for WB: mouse purified polyclonal anti-MMP8 (50 ug)

Storage Instruction: Store reagents of the antibody pair set at -20°C or lower. Please aliquot to avoid repeated freeze thaw cycle. Reagents should be returned to -20°C storage immediately after use.

MSDS:  [Download](#)

Applications

Immunoprecipitation-Western Blot

 [Protocol Download](#)

Gene Information

Entrez GeneID: [4317](#)

Gene Name: MMP8

Gene Alias: CLG1,HNC,PMNL-CL

Gene Description: matrix metalloproteinase 8 (neutrophil collagenase)

Omim ID: [120355](#)

Gene Ontology: [Hyperlink](#)

Application Image

Immunoprecipitation-Western Blot

Gene Summary: Proteins of the matrix metalloproteinase (MMP) family are involved in the breakdown of extracellular matrix in normal physiological processes, such as embryonic development, reproduction, and tissue remodeling, as well as in disease processes, such as arthritis and metastasis. Most MMP's are secreted as inactive proproteins which are activated when cleaved by extracellular proteinases. However, the enzyme encoded by this gene is stored in secondary granules within neutrophils and is activated by autolytic cleavage. Its function is degradation of type I, II and III collagens. The gene is part of a cluster of MMP genes which localize to chromosome 11q22.3. [provided by RefSeq]

Other Designations: PMNL collagenase,matrix metalloproteinase 8,matrix metalloproteinase 8 (neutrophil collagenase),neutrophil collagenase

Related Disease

[Breast cancer](#) [Breast Neoplasms](#) [Bronchiectasis](#) [Carcinoma, Basal Cell](#) [Carcinoma, Hepatocellular](#) [Carcinoma, Squamous Cell](#) [Cardiovascular Diseases](#) [Chorioamnionitis](#) [Connective Tissue Diseases](#) [Coronary Artery Disease](#) [Diabetes Mellitus, Type 2](#) [Disease Progression](#) [Edema](#) [Fetal Diseases](#) [Fetal Membranes, Premature Rupture](#) [Genetic Predisposition to Disease](#) [Hepatitis C, Chronic](#) [Infection](#) [Inflammation](#)

... see more

[服務條款](#) | [隱私權政策](#) | [著作及商標](#) | [網站地圖](#)

©2016 亞諾法生技股份有限公司 Abnova Corporation. 版權所有.