



SZABO SCANDIC

Part of Europa Biosite

Produktinformation



Forschungsprodukte & Biochemikalien



Zellkultur & Verbrauchsmaterial



Diagnostik & molekulare Diagnostik



Laborgeräte & Service

Weitere Information auf den folgenden Seiten!
See the following pages for more information!



Lieferung & Zahlungsart

siehe unsere [Liefer- und Versandbedingungen](#)

Zuschläge

- Mindermengenzuschlag
- Trockeneiszuschlag
- Gefahrgutzuschlag
- Expressversand

SZABO-SCANDIC HandelsgmbH

Quellenstraße 110, A-1100 Wien

T. +43(0)1 489 3961-0

F. +43(0)1 489 3961-7

mail@szabo-scandic.com

www.szabo-scandic.com

[linkedin.com/company/szaboscandic](https://www.linkedin.com/company/szaboscandic) 

MMP13 (Human) IP-WB Antibody Pair

Catalog # : H00004322-PW1

規格 : [1 Set]

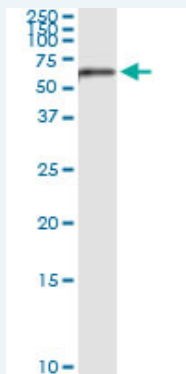
[List All](#)

Specification

Product Description: This IP-WB antibody pair set comes with one antibody for immunoprecipitation and another to detect the precipitated protein in western blot.

Reactivity: Human

Quality Control Testing: Immunoprecipitation-Western Blot (IP-WB)



Immunoprecipitation of MMP13 transfected lysate using rabbit polyclonal anti-MMP13 and Protein A Magnetic Bead ([U0007](#)), and immunoblotted with mouse purified polyclonal anti-MMP13.

Supplied Product: Antibody pair set content:
1. Antibody pair for IP: rabbit polyclonal anti-MMP13 (300 ul)
2. Antibody pair for WB: mouse purified polyclonal anti-MMP13 (50 ug)

Storage Instruction: Store reagents of the antibody pair set at -20°C or lower. Please aliquot to avoid repeated freeze thaw cycle. Reagents should be returned to -20°C storage immediately after use.

MSDS:  [Download](#)

Applications

Immunoprecipitation-Western Blot

 [Protocol Download](#)

Gene Information

Entrez GeneID: [4322](#)

Gene Name: MMP13

Gene Alias: CLG3

Gene Description: matrix metalloproteinase 13 (collagenase 3)

Omim ID: [600108](#), [602111](#)

Gene Ontology: [Hyperlink](#)

Application Image

Immunoprecipitation-Western Blot

Gene Summary: Proteins of the matrix metalloproteinase (MMP) family are involved in the breakdown of extracellular matrix in normal physiological processes, such as embryonic development, reproduction, and tissue remodeling, as well as in disease processes, such as arthritis and metastasis. Most MMP's are secreted as inactive proproteins which are activated when cleaved by extracellular proteinases. The protein encoded by this gene cleaves type II collagen more efficiently than types I and III. It may be involved in articular cartilage turnover and cartilage pathophysiology associated with osteoarthritis. The gene is part of a cluster of MMP genes which localize to chromosome 11q22.3. [provided by RefSeq]

Other Designations: collagenase 3, matrix metalloproteinase 13, matrix metalloproteinase 13 (collagenase 3)

Related Disease

[Adenocarcinoma](#) [Alveolar Bone Loss](#) [Aortic Aneurysm](#), [Abdominal Arteriosclerosis](#)
[Arthritis, Rheumatoid](#) [Atherosclerosis](#) [Breast cancer](#) [Breast Neoplasms](#)
[Carcinoma, Squamous Cell](#) [Cardiovascular Diseases](#) [Chorioamnionitis](#)
[Chronic Periodontitis](#) [Cleft Lip](#) [Cleft Palate](#) [Coronary Artery Disease](#)
[Diabetes Mellitus, Type 2](#) [Disease Progression](#) [Edema](#) [Endometriosis](#)

... see more

[服務條款](#) | [隱私權政策](#) | [著作及商標](#) | [網站地圖](#)

©2016 亞諾法生技股份有限公司 Abnova Corporation. 版權所有.