



SZABO SCANDIC

Part of Europa Biosite

Produktinformation



Forschungsprodukte & Biochemikalien



Zellkultur & Verbrauchsmaterial



Diagnostik & molekulare Diagnostik



Laborgeräte & Service

Weitere Information auf den folgenden Seiten!
See the following pages for more information!



Lieferung & Zahlungsart

siehe unsere [Liefer- und Versandbedingungen](#)

Zuschläge

- Mindermengenzuschlag
- Trockeneiszuschlag
- Gefahrgutzuschlag
- Expressversand

SZABO-SCANDIC HandelsgmbH

Quellenstraße 110, A-1100 Wien

T. +43(0)1 489 3961-0

F. +43(0)1 489 3961-7

mail@szabo-scandic.com

www.szabo-scandic.com

[linkedin.com/company/szaboscandic](https://www.linkedin.com/company/szaboscandic) 

MTHFD1 (Human) IP-WB Antibody Pair

Catalog # : H00004522-PW1

規格 : [1 Set]

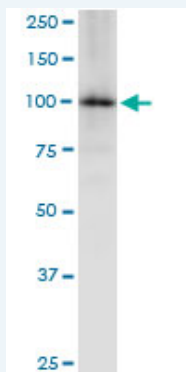
[List All](#)

Specification

Product Description: This IP-WB antibody pair set comes with one antibody for immunoprecipitation and another to detect the precipitated protein in western blot.

Reactivity: Human

Quality Control Testing: Immunoprecipitation-Western Blot (IP-WB)



Immunoprecipitation of MTHFD1 transfected lysate using rabbit polyclonal anti-MTHFD1 and Protein A Magnetic Bead ([U0007](#)), and immunoblotted with mouse purified polyclonal anti-MTHFD1.

Supplied Product: Antibody pair set content:
1. Antibody pair for IP: rabbit polyclonal anti-MTHFD1 (300 ul)
2. Antibody pair for WB: mouse purified polyclonal anti-MTHFD1 (50 ug)

Storage Instruction: Store reagents of the antibody pair set at -20°C or lower. Please aliquot to avoid repeated freeze thaw cycle. Reagents should be returned to -20°C storage immediately after use.

MSDS:  [Download](#)

Applications

Immunoprecipitation-Western Blot

 [Protocol Download](#)

Gene Information

Entrez GeneID: [4522](#)

Gene Name: MTHFD1

Gene Alias: MTHFC, MTHFD

Gene Description: methylenetetrahydrofolate dehydrogenase (NADP+ dependent) 1, methenyltetrahydrofolate cyclohydrolase, formyltetrahydrofolate synthetase

Omim ID: [172460](#), [601634](#)

Application Image

Immunoprecipitation-Western Blot

Gene Ontology: [Hyperlink](#)

Gene Summary: This gene encodes a protein that possesses three distinct enzymatic activities, 5,10-methylenetetrahydrofolate dehydrogenase, 5,10-methenyltetrahydrofolate cyclohydrolase and 10-formyltetrahydrofolate synthetase. Each of these activities catalyzes one of three sequential reactions in the interconversion of 1-carbon derivatives of tetrahydrofolate, which are substrates for methionine, thymidylate, and de novo purine syntheses. The trifunctional enzymatic activities are conferred by two major domains, an aminoterminal portion containing the dehydrogenase and cyclohydrolase activities and a larger synthetase domain. [provided by RefSeq]

Other Designations: 5,10-methylenetetrahydrofolate dehydrogenase, 5,10-methylenetetrahydrofolate cyclohydrolase, 10-formyltetrahydrofolate synthetase, C1-THF synthase, NADP-dependent cyclohydrolase/formyltetrahydrofolate synthetase, cytoplasmic C-1-tetrahydrofolate synthase, met

Gene Pathway

[Glyoxylate and dicarboxylate metabolism](#) [Metabolic pathways](#) [One carbon pool by folate](#)

Related Disease

[Abortion, Spontaneous Abruption Placentae](#) [Adenocarcinoma](#) [Alzheimer Disease](#) [Alzheimer disease](#) [Aortic Aneurysm](#) [Abdominal Arthritis](#) [Rheumatoid Arthritis](#) [Atherosclerosis](#) [Atherosclerosis](#) [Bipolar Disorder](#) [Birth Weight](#) [Brain Ischemia](#) [Breast cancer](#) [Breast Neoplasms](#) [Carcinoma, Non-Small-Cell Lung Carcinoma](#) [Small Cell Carcinoma](#) [Cardiovascular Diseases](#) [Cleft Lip](#) [Cleft Palate](#)

... see more

[服務條款](#) | [隱私權政策](#) | [著作及商標](#) | [網站地圖](#)

©2016 亞諾法生技股份有限公司 Abnova Corporation. 版權所有.