



# SZABO SCANDIC

Part of Europa Biosite

## Produktinformation



Forschungsprodukte & Biochemikalien



Zellkultur & Verbrauchsmaterial



Diagnostik & molekulare Diagnostik



Laborgeräte & Service

Weitere Information auf den folgenden Seiten!  
See the following pages for more information!



### Lieferung & Zahlungsart

siehe unsere [Liefer- und Versandbedingungen](#)

### Zuschläge

- Mindermengenzuschlag
- Trockeneiszuschlag
- Gefahrgutzuschlag
- Expressversand

### SZABO-SCANDIC HandelsgmbH

Quellenstraße 110, A-1100 Wien

T. +43(0)1 489 3961-0

F. +43(0)1 489 3961-7

[mail@szabo-scandic.com](mailto:mail@szabo-scandic.com)

[www.szabo-scandic.com](http://www.szabo-scandic.com)

[linkedin.com/company/szaboscandic](https://www.linkedin.com/company/szaboscandic) 

## MUC1 (Human) Matched Antibody Pair

產品編號 # : H00004582-AP41

規格 : [ 1 Set ]

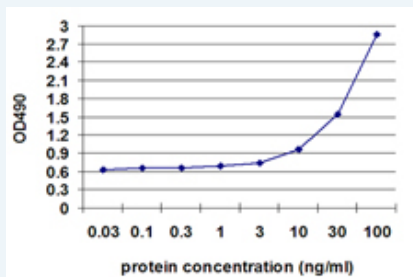
[List All](#)

### Specification

**Product Description:** This antibody pair set comes with matched antibody pair to detect and quantify protein level of human MUC1.

**Reactivity:** Human

**Quality Control Testing:** Standard curve using recombinant protein ( H00004582-Q01 ) as an analyte.



Sandwich ELISA detection sensitivity ranging from 3 ng/ml to 100 ng/ml.

**Supplied Product:** Antibody pair set content:  
 1. Capture antibody: mouse monoclonal anti-MUC1, IgG2b Kappa (100 ug)  
 2. Detection antibody: biotinylated mouse monoclonal anti-MUC1, IgG2a Kappa (50 ug)  
 \*Reagents are sufficient for at least 3-5 x 96 well plates using recommended protocols.

**Storage Instruction:** Store reagents of the antibody pair set at -20°C or lower. Please aliquot to avoid repeated freeze thaw cycle. Reagents should be returned to -20°C storage immediately after use.

**MSDS:**  [Download](#)

### Publication Reference

1. [Increased expression of GCNT1 is associated with altered O-glycosylation of PSA, PAP, and MUC1 in human prostate cancers.](#)  
 Chen Z, Gulzar ZG, St Hill CA, Walcheck B, Brooks J. *JProstate*. 2014 Jul;74(10):1059-67. doi: 10.1002/pros.22826. Epub 2014 May 22.

### Applications

**ELISA Pair (Recombinant protein)**

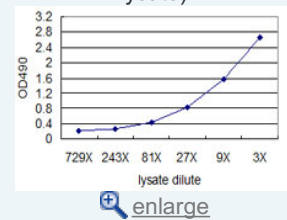
[Protocol Download](#)

**ELISA Pair (Transfected lysate)**

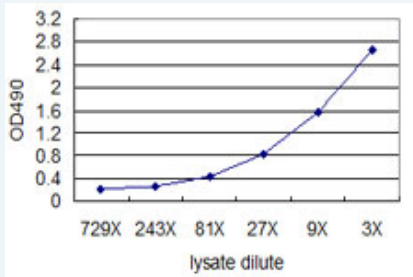
### Application Image

ELISA Pair (Recombinant protein)

ELISA Pair (Transfected lysate)



 [enlarge](#)



Standard curve using MUC1 293T overexpression lysate (non-denatured) as an analyte. Sandwich ELISA detection sensitivity ranging from approximately 729x to 3x dilution of the MUC1 293T overexpression lysate (non-denatured).

[Protocol Download](#)

## Gene Information

**Entrez GeneID:** [4582](#)

**Gene Name:** MUC1

**Gene Alias:** CD227,EMA,H23AG,MAM6,PEM,PEMT,PUM

**Gene Description:** mucin 1, cell surface associated

**Omim ID:** [158340](#)

**Gene Ontology:** [Hyperlink](#)

**Gene Summary:** This gene is a member of the mucin family and encodes a membrane bound, glycosylated phosphoprotein. The protein is anchored to the apical surface of many epithelia by a transmembrane domain, with the degree of glycosylation varying with cell type. It also includes a 20 aa variable number tandem repeat (VNTR) domain, with the number of repeats varying from 20 to 120 in different individuals. The protein serves a protective function by binding to pathogens and also functions in a cell signaling capacity. Overexpression, aberrant intracellular localization, and changes in glycosylation of this protein have been associated with carcinomas. Multiple alternatively spliced transcript variants that encode different isoforms of this gene have been reported, but the full-length nature of only some has been determined. [provided by RefSeq]

**Other Designations:** DF3 antigen,H23 antigen,MUC-1/SEC,MUC-1/X,MUC1/ZD,OTTHUMP00000033787,OTTHUMP00000033790,OTTHUMP00000033795,breast carcinoma-associated antigen DF3,episialin,mucin 1,mucin 1, transmembrane,peanut-reactive urinary mucin,polymorphic epithelial mucin,tumor as

## Related Disease

[Adenocarcinoma](#) [Asthma](#) [Asthma](#) [Attention Deficit Disorder with Hyperactivity](#) [Autistic Disorder](#) [Breast cancer](#) [Breast Neoplasms](#) [Bronchiolitis](#) [Viral Carcinoma](#) [Carcinoma](#) [Squamous Cell](#) [Chronic Disease](#) [Disease Susceptibility](#) [Gastritis](#) [Gastritis](#) [Atrophic](#) [Genetic Predisposition to Disease](#) [Helicobacter Infections](#) [Infant](#) [Premature](#) [Diseases](#) [Kidney Failure](#) [Chronic Lung Diseases](#)

... see more