



# SZABO SCANDIC

Part of Europa Biosite

## Produktinformation



Forschungsprodukte & Biochemikalien



Zellkultur & Verbrauchsmaterial



Diagnostik & molekulare Diagnostik



Laborgeräte & Service

Weitere Information auf den folgenden Seiten!  
See the following pages for more information!



### Lieferung & Zahlungsart

siehe unsere [Liefer- und Versandbedingungen](#)

### Zuschläge

- Mindermengenzuschlag
- Trockeneiszuschlag
- Gefahrgutzuschlag
- Expressversand

### SZABO-SCANDIC HandelsgmbH

Quellenstraße 110, A-1100 Wien

T. +43(0)1 489 3961-0

F. +43(0)1 489 3961-7

[mail@szabo-scandic.com](mailto:mail@szabo-scandic.com)

[www.szabo-scandic.com](http://www.szabo-scandic.com)

[linkedin.com/company/szaboscandic](https://www.linkedin.com/company/szaboscandic) 

## MYL2 (Human) IP-WB Antibody Pair

Catalog # : H00004633-PW1

規格 : [ 1 Set ]

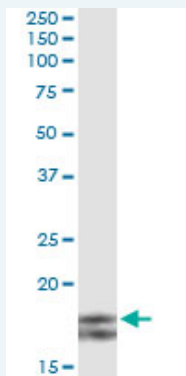
List All

### Specification

**Product Description:** This IP-WB antibody pair set comes with one antibody for immunoprecipitation and another to detect the precipitated protein in western blot.

**Reactivity:** Human

**Quality Control Testing:** Immunoprecipitation-Western Blot (IP-WB)



Immunoprecipitation of MYL2 transfected lysate using mouse monoclonal anti-MYL2 and Protein A Magnetic Bead ([U0007](#)), and immunoblotted with rabbit polyclonal anti-MYL2.

**Supplied Product:** Antibody pair set content:  
1. Antibody pair for IP: mouse monoclonal anti-MYL2 (300 ug)  
2. Antibody pair for WB: rabbit polyclonal anti-MYL2 (50 ul)

**Storage Instruction:** Store reagents of the antibody pair set at -20°C or lower. Please aliquot to avoid repeated freeze thaw cycle. Reagents should be returned to -20°C storage immediately after use.

**MSDS:**  [Download](#)

### Applications

Immunoprecipitation-Western Blot

 [Protocol Download](#)

### Gene Information

**Entrez GeneID:** [4633](#)

**Gene Name:** MYL2

**Gene Alias:** CMH10, DKFZp779C0562, MLC2

**Gene Description:** myosin, light chain 2, regulatory, cardiac, slow

**Omim ID:** [160781](#), [608758](#)

**Gene Ontology:** [Hyperlink](#)

### Application Image

Immunoprecipitation-Western Blot

---

**Gene Summary:** This gene encodes the regulatory light chain associated with cardiac myosin beta (or slow) heavy chain. Ca<sup>+</sup> triggers the phosphorylation of regulatory light chain that in turn triggers contraction. Mutations in this gene are associated with mid-left ventricular chamber type hypertrophic cardiomyopathy. [provided by RefSeq]

---

**Other Designations:** RLC of myosin,cardiac ventricular myosin light chain 2,myosin light chain 2,myosin regulatory light chain 2, ventricular/cardiac muscle isoform,myosin, light polypeptide 2, regulatory, cardiac, slow,regulatory light chain of myosin,slow cardiac myosin reg

---

### Gene Pathway

---

[Focal adhesion](#) [Hypertrophic cardiomyopathy \(HCM\)](#) [Leukocyte transendothelial migration](#)  
[Regulation of actin cytoskeleton](#) [Tight junction](#)

### Related Disease

---

[Cardiomegaly](#) [Cardiomyopathy, Dilated](#) [Cardiomyopathy, Hypertrophic](#)  
[Cardiomyopathy, Hypertrophic, Familial](#) [Cleft Lip](#) [Cleft Palate](#)  
[Genetic Predisposition to Disease](#)

---

[服務條款](#) | [隱私權政策](#) | [著作及商標](#) | [網站地圖](#)

©2016 亞諾法生技股份有限公司 Abnova Corporation. 版權所有.