



SZABO SCANDIC

Part of Europa Biosite

Produktinformation



Forschungsprodukte & Biochemikalien



Zellkultur & Verbrauchsmaterial



Diagnostik & molekulare Diagnostik



Laborgeräte & Service

Weitere Information auf den folgenden Seiten!
See the following pages for more information!



Lieferung & Zahlungsart

siehe unsere [Liefer- und Versandbedingungen](#)

Zuschläge

- Mindermengenzuschlag
- Trockeneiszuschlag
- Gefahrgutzuschlag
- Expressversand

SZABO-SCANDIC HandelsgmbH

Quellenstraße 110, A-1100 Wien

T. +43(0)1 489 3961-0

F. +43(0)1 489 3961-7

mail@szabo-scandic.com

www.szabo-scandic.com

[linkedin.com/company/szaboscandic](https://www.linkedin.com/company/szaboscandic) 

MYOC (Human) Matched Antibody Pair

Catalog # : H00004653-AP11

規格 : [1 Set]

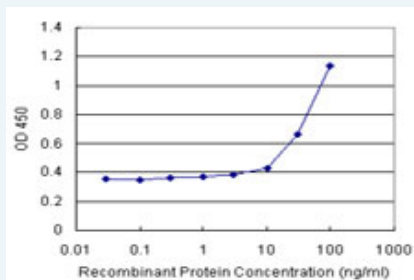
[List All](#)

Specification

Product Description: This antibody pair set comes with matched antibody pair to detect and quantify protein level of human MYOC.

Reactivity: Human

Quality Control Testing: Standard curve using recombinant protein (H00004653-P01) as an analyte.



Sandwich ELISA detection sensitivity ranging from 10 ng/ml to 100 ng/ml.

Supplied Product: Antibody pair set content:
 1. Capture antibody: rabbit MaxPab® affinity purified polyclonal anti-MYOC (100 ug)
 2. Detection antibody: mouse monoclonal anti-MYOC, IgG1 Kappa (20 ug)
 *Reagents are sufficient for at least 1-2 x 96 well plates using recommended protocols.

Storage Instruction: Store reagents of the antibody pair set at -20°C or lower. Please aliquot to avoid repeated freeze thaw cycle. Reagents should be returned to -20°C storage immediately after use.

MSDS:  [Download](#)

Applications

ELISA Pair (Recombinant protein)

 [Protocol Download](#)

Gene Information

Entrez GeneID: [4653](#)

Gene Name: MYOC

Gene Alias: GLC1A,GPOA,JOAG,JOAG1,TIGR,myocilin

Gene Description: myocilin, trabecular meshwork inducible glucocorticoid response

Omim ID: [137750](#), [601652](#)

Gene Ontology: [Hyperlink](#)

Application Image

ELISA Pair (Recombinant protein)

Gene Summary: MYOC encodes the protein myocilin, which is believed to have a role in cytoskeletal function. MYOC is expressed in many ocular tissues, including the trabecular meshwork, and was revealed to be the trabecular meshwork glucocorticoid-inducible response protein (TIGR). The trabecular meshwork is a specialized eye tissue essential in regulating intraocular pressure, and mutations in MYOC have been identified as the cause of hereditary juvenile-onset open-angle glaucoma. [provided by RefSeq]

Other OTTHUMP00000032681,mutated trabecular meshwork-induced
Designations: glucocorticoid response protein,myocilin

Related Disease

[Exfoliation Syndrome](#) [Genetic Predisposition to Disease](#) [Glaucoma](#) [Glaucoma](#)
[Glaucoma, Open-Angle Hypertension](#) [Myopia](#) [Ocular Hypertension](#) [Parkinson disease](#)
[Retinal Diseases](#)

[服務條款](#) | [隱私權政策](#) | [著作及商標](#) | [網站地圖](#)

©2016 亞諾法生技股份有限公司 Abnova Corporation. 版權所有.