



SZABO SCANDIC

Part of Europa Biosite

Produktinformation



Forschungsprodukte & Biochemikalien



Zellkultur & Verbrauchsmaterial



Diagnostik & molekulare Diagnostik



Laborgeräte & Service

Weitere Information auf den folgenden Seiten!
See the following pages for more information!



Lieferung & Zahlungsart

siehe unsere [Liefer- und Versandbedingungen](#)

Zuschläge

- Mindermengenzuschlag
- Trockeneiszuschlag
- Gefahrgutzuschlag
- Expressversand

SZABO-SCANDIC HandelsgmbH

Quellenstraße 110, A-1100 Wien

T. +43(0)1 489 3961-0

F. +43(0)1 489 3961-7

mail@szabo-scandic.com

www.szabo-scandic.com

[linkedin.com/company/szaboscandic](https://www.linkedin.com/company/szaboscandic) 

PAX6 (Human) IP-WB Antibody Pair

Catalog # : H00005080-PW1

規格 : [1 Set]

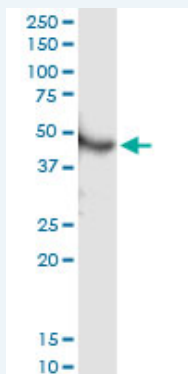
List All

Specification

Product Description: This IP-WB antibody pair set comes with one antibody for immunoprecipitation and another to detect the precipitated protein in western blot.

Reactivity: Human

Quality Control Testing: Immunoprecipitation-Western Blot (IP-WB)



Immunoprecipitation of PAX6 transfected lysate using rabbit polyclonal anti-PAX6 and Protein A Magnetic Bead ([U0007](#)), and immunoblotted with mouse polyclonal anti-PAX6.

Supplied Product: Antibody pair set content:
1. Antibody pair for IP: rabbit polyclonal anti-PAX6 (300 ul)
2. Antibody pair for WB: mouse polyclonal anti-PAX6 (50 ul)

Storage Instruction: Store reagents of the antibody pair set at -20°C or lower. Please aliquot to avoid repeated freeze thaw cycle. Reagents should be returned to -20°C storage immediately after use.

MSDS:  [Download](#)

Applications

Immunoprecipitation-Western Blot

 [Protocol Download](#)

Gene Information

Entrez GeneID: [5080](#)

Gene Name: PAX6

Gene Alias: AN,AN2,D11S812E,MGC17209,MGDA,WAGR

Gene Description: paired box 6

Omim ID: [106210](#), [120200](#), [120430](#), [129750](#), [136520](#), [148190](#), [165550](#), [603807](#), [607108](#)

Application Image

Immunoprecipitation-Western Blot

Gene Ontology: [Hyperlink](#)

Gene Summary: This gene encodes paired box gene 6, one of many human homologs of the *Drosophila melanogaster* gene *prd*. In addition to the hallmark feature of this gene family, a conserved paired box domain, the encoded protein also contains a homeo box domain. Both domains are known to bind DNA, and function as regulators of gene transcription. This gene is expressed in the developing nervous system, and in developing eyes. Mutations in this gene are known to cause ocular disorders such as aniridia and Peter's anomaly. Alternatively spliced transcript variants encoding either the same or different isoform have been found for this gene. [provided by RefSeq]

Other Designations: OTTHUMP00000038833, OTTHUMP00000038834, OTTHUMP00000038835, OTTHUMP00000038836, OTTHUMP00000038837, OTTHUMP00000038838, OTTHUMP00000038839, OTTHUMP00000038840, paired box gene 6, paired box homeotic gene-6

Gene Pathway

[Maturity onset diabetes of the young](#)

Related Disease

[Abnormalities](#) [Alcoholism](#) [Atherosclerosis](#) [Atrophy](#) [Autistic Disorder](#) [Blepharoptosis](#) [Calcinosis](#) [Cleft Lip](#) [Cleft Palate](#) [Coronary Artery Disease](#) [Diabetes Mellitus, Type 2](#) [Genetic Predisposition to Disease](#) [Myopia](#) [Myopia, Degenerative](#) [Photophobia](#) [Retinal Diseases](#) [Tobacco Use Disorder](#) [Vision Disorders](#)

[服務條款](#) | [隱私權政策](#) | [著作及商標](#) | [網站地圖](#)

©2016 亞諾法生技股份有限公司 Abnova Corporation. 版權所有.