



# SZABO SCANDIC

Part of Europa Biosite

## Produktinformation



Forschungsprodukte & Biochemikalien



Zellkultur & Verbrauchsmaterial



Diagnostik & molekulare Diagnostik



Laborgeräte & Service

Weitere Information auf den folgenden Seiten!  
See the following pages for more information!



### Lieferung & Zahlungsart

siehe unsere [Liefer- und Versandbedingungen](#)

### Zuschläge

- Mindermengenzuschlag
- Trockeneiszuschlag
- Gefahrgutzuschlag
- Expressversand

### SZABO-SCANDIC HandelsgmbH

Quellenstraße 110, A-1100 Wien

T. +43(0)1 489 3961-0

F. +43(0)1 489 3961-7

[mail@szabo-scandic.com](mailto:mail@szabo-scandic.com)

[www.szabo-scandic.com](http://www.szabo-scandic.com)

[linkedin.com/company/szaboscandic](https://www.linkedin.com/company/szaboscandic) 

## PBX2 (Human) IP-WB Antibody Pair

Catalog # : H00005089-PW1

規格 : [ 1 Set ]

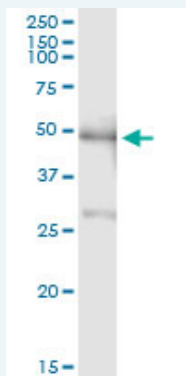
List All

### Specification

**Product Description:** This IP-WB antibody pair set comes with one antibody for immunoprecipitation and another to detect the precipitated protein in western blot.

**Reactivity:** Human

**Quality Control Testing:** Immunoprecipitation-Western Blot (IP-WB)



Immunoprecipitation of PBX2 transfected lysate using rabbit polyclonal anti-PBX2 and Protein A Magnetic Bead ([U0007](#)), and immunoblotted with mouse monoclonal anti-PBX2.

**Supplied Product:** Antibody pair set content:  
 1. Antibody pair for IP: rabbit polyclonal anti-PBX2 (300 ul)  
 2. Antibody pair for WB: mouse monoclonal anti-PBX2 (50 ug)

**Storage Instruction:** Store reagents of the antibody pair set at -20°C or lower. Please aliquot to avoid repeated freeze thaw cycle. Reagents should be returned to -20°C storage immediately after use.

**MSDS:**  [Download](#)

### Applications

Immunoprecipitation-Western Blot

 [Protocol Download](#)

### Gene Information

**Entrez GeneID:** [5089](#)

**Gene Name:** PBX2

**Gene Alias:** G17,HOX12,PBX2MHC

**Gene Description:** pre-B-cell leukemia homeobox 2

**Omim ID:** [176311](#)

**Gene Ontology:** [Hyperlink](#)

### Application Image

Immunoprecipitation-Western Blot

---

**Gene Summary:** This gene encodes a ubiquitously expressed member of the TALE/PBX homeobox family. It was identified by its similarity to a homeobox gene which is involved in t(1;19) translocation in acute pre-B-cell leukemias. This protein is a transcriptional activator which binds to the TLX1 promoter. The gene is located within the major histocompatibility complex (MHC) on chromosome 6. [provided by RefSeq]

---

**Other Designations:** OTTHUMP00000029151,homeobox 12,pre-B-cell leukemia transcription factor 2

---

#### **Related Disease**

---

[Abortion, Spontaneous](#) [Cardiovascular Diseases](#) [Colitis, Ulcerative](#) [Crohn's disease](#)  
[Diabetes Mellitus, Type 2](#) [Edema](#) [Genetic Predisposition to Disease](#)  
[Lupus Erythematosus, Systemic](#)

---

[服務條款](#) | [隱私權政策](#) | [著作及商標](#) | [網站地圖](#)

©2016 亞諾法生技股份有限公司 Abnova Corporation. 版權所有.