



# SZABO SCANDIC

Part of Europa Biosite

## Produktinformation



Forschungsprodukte & Biochemikalien



Zellkultur & Verbrauchsmaterial



Diagnostik & molekulare Diagnostik



Laborgeräte & Service

Weitere Information auf den folgenden Seiten!  
See the following pages for more information!



### Lieferung & Zahlungsart

siehe unsere [Liefer- und Versandbedingungen](#)

### Zuschläge

- Mindermengenzuschlag
- Trockeneiszuschlag
- Gefahrgutzuschlag
- Expressversand

### SZABO-SCANDIC HandelsgmbH

Quellenstraße 110, A-1100 Wien

T. +43(0)1 489 3961-0

F. +43(0)1 489 3961-7

[mail@szabo-scandic.com](mailto:mail@szabo-scandic.com)

[www.szabo-scandic.com](http://www.szabo-scandic.com)

[linkedin.com/company/szaboscandic](https://www.linkedin.com/company/szaboscandic) 

## PCK2 (Human) Matched Antibody Pair

Catalog # : H00005106-AP21

規格 : [ 1 Set ]

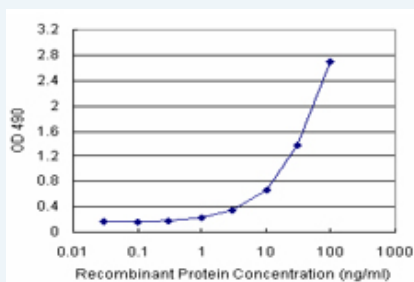
List All

### Specification

**Product Description:** This antibody pair set comes with matched antibody pair to detect and quantify protein level of human PCK2.

**Reactivity:** Human

**Quality Control Testing:** Standard curve using recombinant protein ( H00005106-P01 ) as an analyte.



Sandwich ELISA detection sensitivity ranging from 1 ng/ml to 100 ng/ml.

**Supplied Product:** Antibody pair set content:  
 1. Capture antibody: rabbit MaxPab® affinity purified polyclonal anti-PCK2 (100 ug)  
 2. Detection antibody: mouse purified polyclonal anti-PCK2 (20 ug)  
 \*Reagents are sufficient for at least 1-2 x 96 well plates using recommended protocols.

**Storage Instruction:** Store reagents of the antibody pair set at -20°C or lower. Please aliquot to avoid repeated freeze thaw cycle. Reagents should be returned to -20°C storage immediately after use.

**MSDS:**  [Download](#)

### Applications

ELISA Pair (Recombinant protein)

 [Protocol Download](#)

### Gene Information

**Entrez GeneID:** [5106](#)

**Gene Name:** PCK2

**Gene Alias:** PEPCK,PEPCK-M,PEPCK2

**Gene Description:** phosphoenolpyruvate carboxykinase 2 (mitochondrial)

**Omim ID:** [261650](#)

**Gene Ontology:** [Hyperlink](#)

### Application Image

ELISA Pair (Recombinant protein)

**Gene Summary:** This gene encodes a member of the phosphoenolpyruvate carboxykinase (GTP) family. The protein is a mitochondrial enzyme that catalyzes the conversion of oxaloacetate to phosphoenolpyruvate in the presence of GTP. A cytosolic form encoded by a different gene has also been characterized and is the key enzyme of gluconeogenesis in the liver. The encoded protein may serve a similar function, although it is constitutively expressed and not modulated by hormones such as glucagon and insulin that regulate the cytosolic form. Alternatively spliced transcript variants have been described. [provided by RefSeq]

**Other Designations:** OTTHUMP00000164700, PEP carboxykinase, mitochondrial phosphoenolpyruvate carboxykinase 2, phosphoenolpyruvate carboxylase, phosphopyruvate carboxylase

#### Gene Pathway

[Adipocytokine signaling pathway](#) [Citrate cycle \(TCA cycle\)](#) [Glycolysis / Gluconeogenesis](#)  
[Insulin signaling pathway](#) [Metabolic pathways](#) [PPAR signaling pathway](#)  
[Pyruvate metabolism](#)

#### Related Disease

[Diabetes Mellitus](#) [Diabetes Mellitus, Type 2](#)

[服務條款](#) | [隱私權政策](#) | [著作及商標](#) | [網站地圖](#)

©2016 亞諾法生技股份有限公司 Abnova Corporation. 版權所有.