



SZABO SCANDIC

Part of Europa Biosite

Produktinformation



Forschungsprodukte & Biochemikalien



Zellkultur & Verbrauchsmaterial



Diagnostik & molekulare Diagnostik



Laborgeräte & Service

Weitere Information auf den folgenden Seiten!
See the following pages for more information!



Lieferung & Zahlungsart

siehe unsere [Liefer- und Versandbedingungen](#)

Zuschläge

- Mindermengenzuschlag
- Trockeneiszuschlag
- Gefahrgutzuschlag
- Expressversand

SZABO-SCANDIC HandelsgmbH

Quellenstraße 110, A-1100 Wien

T. +43(0)1 489 3961-0

F. +43(0)1 489 3961-7

mail@szabo-scandic.com

www.szabo-scandic.com

[linkedin.com/company/szaboscandic](https://www.linkedin.com/company/szaboscandic) 

PCK2 (Human) IP-WB Antibody Pair

Catalog # : H00005106-PW1

規格 : [1 Set]

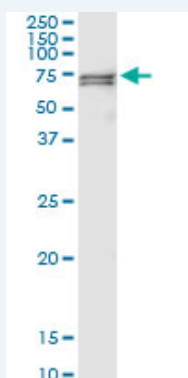
[List All](#)

Specification

Product Description: This IP-WB antibody pair set comes with one antibody for immunoprecipitation and another to detect the precipitated protein in western blot.

Reactivity: Human

Quality Control Testing: Immunoprecipitation-Western Blot (IP-WB)



Immunoprecipitation of PCK2 transfected lysate using rabbit polyclonal anti-PCK2 and Protein A Magnetic Bead ([U0007](#)), and immunoblotted with mouse purified polyclonal anti-PCK2.


Supplied Product: Antibody pair set content:
1. Antibody pair for IP: rabbit polyclonal anti-PCK2 (300 ul)
2. Antibody pair for WB: mouse purified polyclonal anti-PCK2 (50 ug)

Storage Instruction: Store reagents of the antibody pair set at -20°C or lower. Please aliquot to avoid repeated freeze thaw cycle. Reagents should be returned to -20°C storage immediately after use.

MSDS:  [Download](#)

Applications

Immunoprecipitation-Western Blot

 [Protocol Download](#)

Gene Information

Entrez GeneID: [5106](#)

Gene Name: PCK2

Gene Alias: PEPCK, PEPCK-M, PEPCK2

Gene Description: phosphoenolpyruvate carboxykinase 2 (mitochondrial)

Omim ID: [261650](#)

Gene Ontology: [Hyperlink](#)

Application Image

Immunoprecipitation-Western Blot

Gene Summary: This gene encodes a member of the phosphoenolpyruvate carboxykinase (GTP) family. The protein is a mitochondrial enzyme that catalyzes the conversion of oxaloacetate to phosphoenolpyruvate in the presence of GTP. A cytosolic form encoded by a different gene has also been characterized and is the key enzyme of gluconeogenesis in the liver. The encoded protein may serve a similar function, although it is constitutively expressed and not modulated by hormones such as glucagon and insulin that regulate the cytosolic form. Alternatively spliced transcript variants have been described. [provided by RefSeq]

Other OTTHUMP00000164700, PEP carboxykinase, mitochondrial
Designations: phosphoenolpyruvate carboxykinase 2, phosphoenolpyruvate carboxylase, phosphopyruvate carboxylase

Gene Pathway

[Adipocytokine signaling pathway](#) [Citrate cycle \(TCA cycle\)](#) [Glycolysis / Gluconeogenesis](#)
[Insulin signaling pathway](#) [Metabolic pathways](#) [PPAR signaling pathway](#)
[Pyruvate metabolism](#)

Related Disease

[Diabetes Mellitus](#) [Diabetes Mellitus, Type 2](#)

[服務條款](#) | [隱私權政策](#) | [著作及商標](#) | [網站地圖](#)

©2016 亞諾法生技股份有限公司 Abnova Corporation. 版權所有.