



# SZABO SCANDIC

Part of Europa Biosite

## Produktinformation



Forschungsprodukte & Biochemikalien



Zellkultur & Verbrauchsmaterial



Diagnostik & molekulare Diagnostik



Laborgeräte & Service

Weitere Information auf den folgenden Seiten!  
See the following pages for more information!



### Lieferung & Zahlungsart

siehe unsere [Liefer- und Versandbedingungen](#)

### Zuschläge

- Mindermengenzuschlag
- Trockeneiszuschlag
- Gefahrgutzuschlag
- Expressversand

### SZABO-SCANDIC HandelsgmbH

Quellenstraße 110, A-1100 Wien

T. +43(0)1 489 3961-0

F. +43(0)1 489 3961-7

[mail@szabo-scandic.com](mailto:mail@szabo-scandic.com)

[www.szabo-scandic.com](http://www.szabo-scandic.com)

[linkedin.com/company/szaboscandic](https://www.linkedin.com/company/szaboscandic) 

## PDGFRB (Human) IP-WB Antibody Pair

Catalog # : H00005159-PW1

規格 : [ 1 Set ]

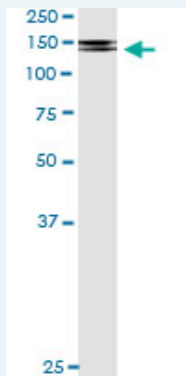
[List All](#)

### Specification

**Product Description:** This IP-WB antibody pair set comes with one antibody for immunoprecipitation and another to detect the precipitated protein in western blot.

**Reactivity:** Human

**Quality Control Testing:** Immunoprecipitation-Western Blot (IP-WB)



Immunoprecipitation of PDGFRB transfected lysate using mouse monoclonal anti-PDGFRB and Protein A Magnetic Bead ([U0007](#)), and immunoblotted with rabbit polyclonal anti-PDGFRB.

**Supplied Product:** Antibody pair set content:  
1. Antibody pair for IP: mouse monoclonal anti-PDGFRB (300 ug)  
2. Antibody pair for WB: rabbit polyclonal anti-PDGFRB (50 ul)

**Storage Instruction:** Store reagents of the antibody pair set at -20°C or lower. Please aliquot to avoid repeated freeze thaw cycle. Reagents should be returned to -20°C storage immediately after use.

**MSDS:**  [Download](#)

### Applications

**Immunoprecipitation-Western Blot**

 [Protocol Download](#)

### Gene Information

**Entrez GeneID:** [5159](#)

**Gene Name:** PDGFRB

**Gene Alias:** CD140B,JTK12,PDGF-R-beta,PDGFR,PDGFR1

**Gene Description:** platelet-derived growth factor receptor, beta polypeptide

**Omim ID:** [131440](#), [173410](#)

**Gene Ontology:** [Hyperlink](#)

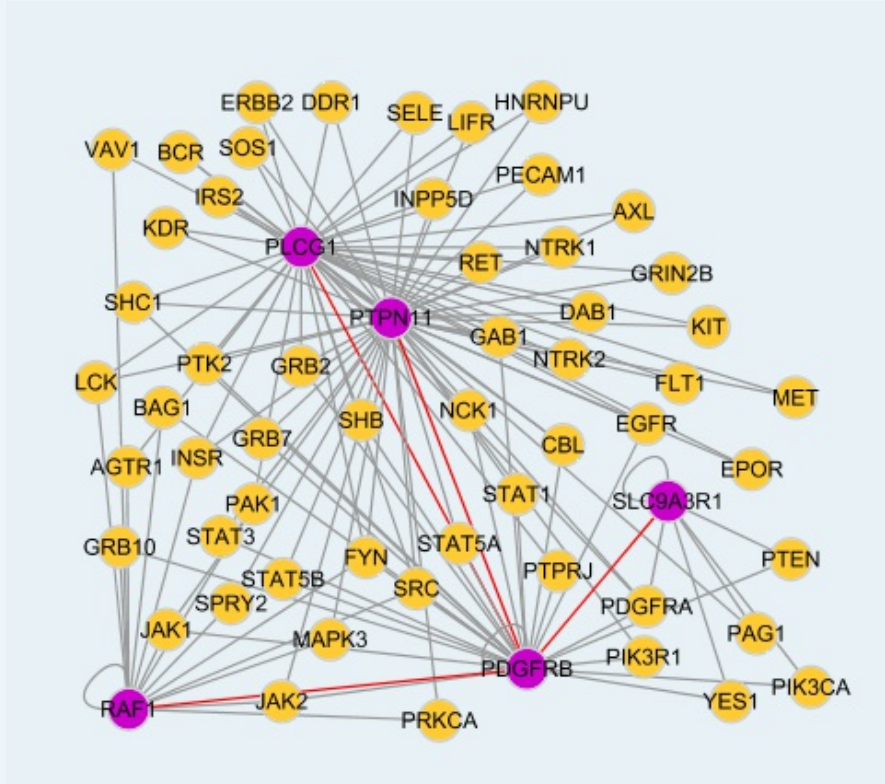
### Application Image

Immunoprecipitation-Western Blot

**Gene Summary:** This gene encodes a cell surface tyrosine kinase receptor for members of the platelet-derived growth factor family. These growth factors are mitogens for cells of mesenchymal origin. The identity of the growth factor bound to a receptor monomer determines whether the functional receptor is a homodimer or a heterodimer, composed of both platelet-derived growth factor receptor alpha and beta polypeptides. This gene is flanked on chromosome 5 by the genes for granulocyte-macrophage colony-stimulating factor and macrophage-colony stimulating factor receptor; all three genes may be implicated in the 5-q syndrome. A translocation between chromosomes 5 and 12, that fuses this gene to that of the translocation, ETV6, leukemia gene, results in chronic myeloproliferative disorder with eosinophilia. [provided by RefSeq]

**Other Designations:** beta platelet-derived growth factor receptor, platelet-derived growth factor receptor beta, soluble PDGFRb variant 1

**Interactome**



**Gene Pathway**

[Calcium signaling pathway](#) [Colorectal cancer](#) [Cytokine-cytokine receptor interaction](#)  
[Focal adhesion](#) [Gap junction](#) [Glioma](#) [MAPK signaling pathway](#) [Melanoma](#)  
[Pathways in cancer](#) [Prostate cancer](#) [Regulation of actin cytoskeleton](#)

**Related Disease**

[Acute Disease](#) [Adenocarcinoma](#) [Alzheimer Disease](#) [Alzheimer disease](#)  
[Cardiovascular Diseases](#) [Diabetes Complications](#) [Diabetes Mellitus, Type 2](#)  
[Disease Models, Animal](#) [Edema](#) [Esophageal Neoplasms](#) [Genetic Predisposition to Disease](#)  
[Hyperparathyroidism, Secondary](#) [Kidney Failure, Chronic](#) [Leukemia, Myeloid](#)  
[Metabolic Syndrome X](#) [Neoplasms](#) [Osteoporosis](#) [Ovarian Neoplasms](#) [Schizophrenia](#)

... see more