



SZABO SCANDIC

Part of Europa Biosite

Produktinformation



Forschungsprodukte & Biochemikalien



Zellkultur & Verbrauchsmaterial



Diagnostik & molekulare Diagnostik



Laborgeräte & Service

Weitere Information auf den folgenden Seiten!
See the following pages for more information!



Lieferung & Zahlungsart

siehe unsere [Liefer- und Versandbedingungen](#)

Zuschläge

- Mindermengenzuschlag
- Trockeneiszuschlag
- Gefahrgutzuschlag
- Expressversand

SZABO-SCANDIC HandelsgmbH

Quellenstraße 110, A-1100 Wien

T. +43(0)1 489 3961-0

F. +43(0)1 489 3961-7

mail@szabo-scandic.com

www.szabo-scandic.com

[linkedin.com/company/szaboscandic](https://www.linkedin.com/company/szaboscandic) 

PDPK1 (Human) IP-WB Antibody Pair

Catalog # : H00005170-PW2

規格 : [1 Set]

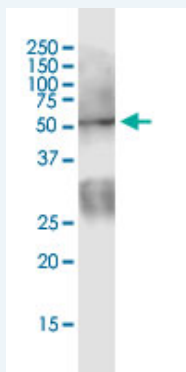
[List All](#)

Specification

Product Description: This IP-WB antibody pair set comes with one antibody for immunoprecipitation and another to detect the precipitated protein in western blot.

Reactivity: Human

Quality Control Testing: Immunoprecipitation-Western Blot (IP-WB)



Immunoprecipitation of PDPK1 transfected lysate using rabbit polyclonal anti-PDPK1 and Protein A Magnetic Bead ([U0007](#)), and immunoblotted with mouse purified polyclonal anti-PDPK1.

Supplied Product: Antibody pair set content:
 1. Antibody pair for IP: rabbit polyclonal anti-PDPK1 (300 ul)
 2. Antibody pair for WB: mouse purified polyclonal anti-PDPK1 (50 ug)

Storage Instruction: Store reagents of the antibody pair set at -20°C or lower. Please aliquot to avoid repeated freeze thaw cycle. Reagents should be returned to -20°C storage immediately after use.

Applications

Immunoprecipitation-Western Blot

 [Protocol Download](#)

Gene Information

Entrez GeneID: [5170](#)

Gene Name: PDPK1

Gene Alias: MGC20087, MGC35290, PDK1, PRO0461

Gene Description: 3-phosphoinositide dependent protein kinase-1

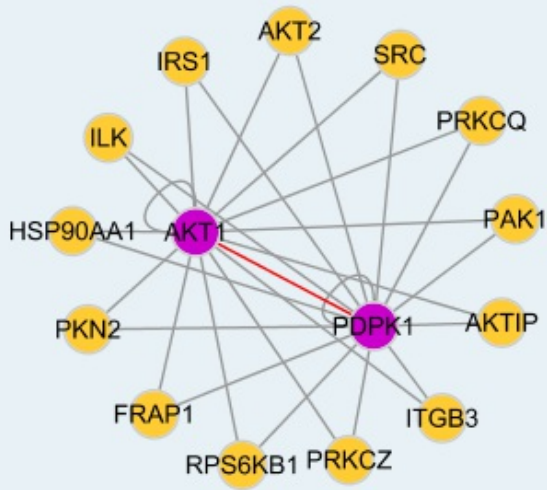
Omim ID: [605213](#)

Gene Ontology: [Hyperlink](#)

Other: PkB kinase like gene 1, PkB-like 1, protein kinase

Designations:

Interactome



Gene Pathway

[Endometrial cancer](#) [Focal adhesion](#) [Insulin signaling pathway](#) [mTOR signaling pathway](#)
[Non-small cell lung cancer](#) [PPAR signaling pathway](#) [Prostate cancer](#)

Related Disease

[Adenocarcinoma, Papillary](#) [Thyroid Neoplasms](#)

[服務條款](#) | [隱私權政策](#) | [著作及商標](#) | [網站地圖](#)

©2016 亞諾法生技股份有限公司 Abnova Corporation. 版權所有.