



SZABO SCANDIC

Part of Europa Biosite

Produktinformation



Forschungsprodukte & Biochemikalien



Zellkultur & Verbrauchsmaterial



Diagnostik & molekulare Diagnostik



Laborgeräte & Service

Weitere Information auf den folgenden Seiten!
See the following pages for more information!



Lieferung & Zahlungsart

siehe unsere [Liefer- und Versandbedingungen](#)

Zuschläge

- Mindermengenzuschlag
- Trockeneiszuschlag
- Gefahrgutzuschlag
- Expressversand

SZABO-SCANDIC HandelsgmbH

Quellenstraße 110, A-1100 Wien

T. +43(0)1 489 3961-0

F. +43(0)1 489 3961-7

mail@szabo-scandic.com

www.szabo-scandic.com

[linkedin.com/company/szaboscandic](https://www.linkedin.com/company/szaboscandic) 

PECAM1 (Human) IP-WB Antibody Pair

Catalog # : H00005175-PW1

規格 : [1 Set]

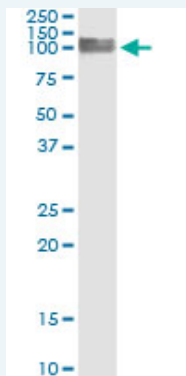
List All

Specification

Product Description: This IP-WB antibody pair set comes with one antibody for immunoprecipitation and another to detect the precipitated protein in western blot.

Reactivity: Human

Quality Control Testing: Immunoprecipitation-Western Blot (IP-WB)



Immunoprecipitation of PECAM1 transfected lysate using mouse monoclonal anti-PECAM1 and Protein A Magnetic Bead ([U0007](#)), and immunoblotted with rabbit polyclonal anti-PECAM1.

Supplied Product: Antibody pair set content:
1. Antibody pair for IP: mouse monoclonal anti-PECAM1 (300 ug)
2. Antibody pair for WB: rabbit polyclonal anti-PECAM1 (50 ul)

Storage Instruction: Store reagents of the antibody pair set at -20°C or lower. Please aliquot to avoid repeated freeze thaw cycle. Reagents should be returned to -20°C storage immediately after use.

MSDS:  [Download](#)

Applications

Immunoprecipitation-Western Blot

 [Protocol Download](#)

Gene Information

Entrez GeneID: [5175](#)

Gene Name: PECAM1

Gene Alias: CD31, PECAM-1

Gene Description: platelet/endothelial cell adhesion molecule

Omim ID: [173445](#)

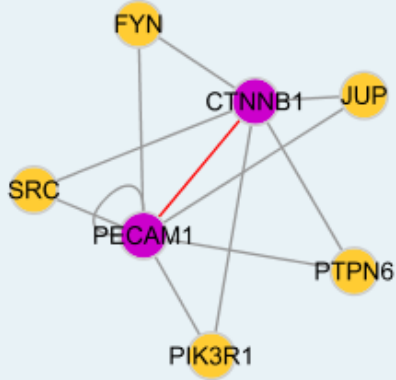
Gene Ontology: [Hyperlink](#)

Application Image

Immunoprecipitation-Western Blot

Other Designations: CD31 antigen,CD31/EndoCAM,PECAM-1, CD31/EndoCAM,adhesion molecule

Interactome



Gene Pathway

[Cell adhesion molecules \(CAMs\)](#) [Leukocyte transendothelial migration](#)

Related Disease

[Acute Disease](#) [Angina Pectoris](#) [Arteriosclerosis](#) [Asthma](#) [Asthma](#) [Astrocytoma](#) [Atherosclerosis](#) [Atherosclerosis](#) [Brain Ischemia](#) [Bronchiolitis, Viral](#) [Cadaver Cerebral Hemorrhage](#) [Chorioamnionitis](#) [Cicatrix](#) [Coronary Artery Disease](#) [Coronary Disease](#) [Coronary Stenosis](#) [Crohn's disease](#) [Diabetes Mellitus, Type 2](#)

[... see more](#)

[服務條款](#) | [隱私權政策](#) | [著作及商標](#) | [網站地圖](#)

©2016 亞諾法生技股份有限公司 Abnova Corporation. 版權所有.