



# SZABO SCANDIC

Part of Europa Biosite

## Produktinformation



Forschungsprodukte & Biochemikalien



Zellkultur & Verbrauchsmaterial



Diagnostik & molekulare Diagnostik



Laborgeräte & Service

Weitere Information auf den folgenden Seiten!  
See the following pages for more information!



### Lieferung & Zahlungsart

siehe unsere [Liefer- und Versandbedingungen](#)

### Zuschläge

- Mindermengenzuschlag
- Trockeneiszuschlag
- Gefahrgutzuschlag
- Expressversand

### SZABO-SCANDIC HandelsgmbH

Quellenstraße 110, A-1100 Wien

T. +43(0)1 489 3961-0

F. +43(0)1 489 3961-7

[mail@szabo-scandic.com](mailto:mail@szabo-scandic.com)

[www.szabo-scandic.com](http://www.szabo-scandic.com)

[linkedin.com/company/szaboscandic](https://www.linkedin.com/company/szaboscandic) 

## SERPINF1 (Human) Matched Antibody Pair

Catalog # : H00005176-AP31

規格 : [ 1 Set ]

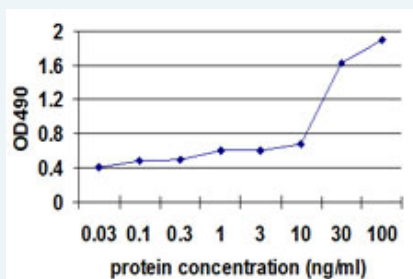
[List All](#)

### Specification

**Product Description:** This antibody pair set comes with matched antibody pair to detect and quantify protein level of human SERPINF1.

**Reactivity:** Human

**Quality Control Testing:** Standard curve using recombinant protein ( H00005176-P01 ) as an analyte.



Sandwich ELISA detection sensitivity ranging from 3 ng/ml to 100 ng/ml.

**Supplied Product:** Antibody pair set content:  
 1. Capture antibody: rabbit MaxPab® affinity purified polyclonal anti-SERPINF1 (100 ug)  
 2. Detection antibody: biotinylated rabbit MaxPab® affinity purified polyclonal anti-SERPINF1 (20 ug)  
 \*Reagents are sufficient for at least 1-2 x 96 well plates using recommended protocols.

**Storage Instruction:** Store reagents of the antibody pair set at -20°C or lower. Please aliquot to avoid repeated freeze thaw cycle. Reagents should be returned to -20°C storage immediately after use.

**MSDS:**  [Download](#)

### Applications

ELISA Pair (Recombinant protein)

 [Protocol Download](#)

### Gene Information

**Entrez GeneID:** [5176](#)

**Gene Name:** SERPINF1

**Gene Alias:** EPC-1, PEDF, PIG35

**Gene Description:** serpin peptidase inhibitor, clade F (alpha-2 antiplasmin, pigment epithelium derived factor), member 1

**Omim ID:** [172860](#)

**Gene Ontology:** [Hyperlink](#)

**Gene Summary:** The PEDF gene is a member of the serpin gene family. Serpins are a group of serine protease inhibitors, some of which have also been reported to exhibit neurotrophic activity.[supplied by OMIM

**Other Designations:** pigment epithelium-derived factor,proliferation-inducing protein 35,serine (or cysteine) proteinase inhibitor, clade F (alpha-2 antiplasmin, pigment epithelium derived factor), member 1

#### **Related Disease**

[Cardiovascular Diseases](#) [Choroid Diseases](#) [Choroidal Neovascularization](#)  
[Colorectal Neoplasms](#) [Diabetes Mellitus, Type 2](#) [Diabetic Angiopathies](#)  
[Diabetic Retinopathy](#) [Edema](#) [Genetic Predisposition to Disease](#) [Macular Degeneration](#)  
[Retinopathy of Prematurity](#)

[服務條款](#) | [隱私權政策](#) | [著作及商標](#) | [網站地圖](#)

©2016 亞諾法生技股份有限公司 Abnova Corporation. 版權所有.