



# SZABO SCANDIC

Part of Europa Biosite

## Produktinformation



Forschungsprodukte & Biochemikalien



Zellkultur & Verbrauchsmaterial



Diagnostik & molekulare Diagnostik



Laborgeräte & Service

Weitere Information auf den folgenden Seiten!  
See the following pages for more information!



### Lieferung & Zahlungsart

siehe unsere [Liefer- und Versandbedingungen](#)

### Zuschläge

- Mindermengenzuschlag
- Trockeneiszuschlag
- Gefahrgutzuschlag
- Expressversand

### SZABO-SCANDIC HandelsgmbH

Quellenstraße 110, A-1100 Wien

T. +43(0)1 489 3961-0

F. +43(0)1 489 3961-7

[mail@szabo-scandic.com](mailto:mail@szabo-scandic.com)

[www.szabo-scandic.com](http://www.szabo-scandic.com)

[linkedin.com/company/szaboscandic](https://www.linkedin.com/company/szaboscandic) 

## SERPINA1 (Human) IP-WB Antibody Pair

Catalog # : H00005265-PW1

規格 : [ 1 Set ]

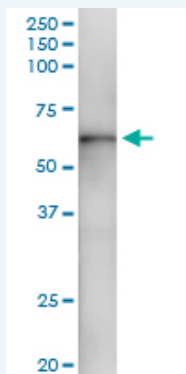
[List All](#)

### Specification

**Product Description:** This IP-WB antibody pair set comes with one antibody for immunoprecipitation and another to detect the precipitated protein in western blot.

**Reactivity:** Human

**Quality Control Testing:** Immunoprecipitation-Western Blot (IP-WB)



Immunoprecipitation of SERPINA1 transfected lysate using rabbit polyclonal anti-SERPINA1 and Protein A Magnetic Bead ([U0007](#)), and immunoblotted with mouse polyclonal anti-SERPINA1.

**Supplied Product:** Antibody pair set content:  
1. Antibody pair for IP: rabbit polyclonal anti-SERPINA1 (300 ul)  
2. Antibody pair for WB: mouse polyclonal anti-SERPINA1 (50 ul)

**Storage Instruction:** Store reagents of the antibody pair set at -20°C or lower. Please aliquot to avoid repeated freeze thaw cycle. Reagents should be returned to -20°C storage immediately after use.

### Applications

Immunoprecipitation-Western Blot

 [Protocol Download](#)

### Gene Information

**Entrez GeneID:** [5265](#)

**Gene Name:** SERPINA1

**Gene Alias:** A1A,A1AT,AAT,MGC23330,MGC9222,PI,PI1,PRO2275

**Gene Description:** serpin peptidase inhibitor, clade A (alpha-1 antiproteinase, antitrypsin), member 1

**Omim ID:** [107400](#), [606963](#)

**Gene Ontology:** [Hyperlink](#)

**Gene Summary:** The protein encoded by this gene is secreted and is a serine protease

inhibitor whose targets include elastase, plasmin, thrombin, trypsin, chymotrypsin, and plasminogen activator. Defects in this gene can cause emphysema or liver disease. Several transcript variants encoding the same protein have been found for this gene. [provided by RefSeq]

**Other Designations:** protease inhibitor 1 (anti-elastase), alpha-1-antitrypsin, serine (or cysteine) proteinase inhibitor, clade A, member 1, serine proteinase inhibitor, clade A, member 1

### Gene Pathway

[Complement and coagulation cascades](#)

### Related Disease

[Abortion](#), [Spontaneous Acute Disease](#) [Acute-Phase Reaction](#) [Adenocarcinoma](#)  
[Airway Obstruction](#) [alpha 1-Antitrypsin Deficiency](#) [Alpha-1-antitrypsin deficiency](#)  
[Aortic Stenosis](#), [Supravalvular Arterial Occlusive Diseases](#) [Asbestosis](#) [Asthma](#) [Asthma](#)  
[Atherosclerosis](#) [Atherosclerosis](#) [Bacterial Infections](#) [Brain Ischemia](#) [Bronchiectasis](#)  
[Bronchitis](#) [Calcinosis](#)

[... see more](#)

[服務條款](#) | [隱私權政策](#) | [著作及商標](#) | [網站地圖](#)

©2016 亞諾法生技股份有限公司 Abnova Corporation. 版權所有.