



SZABO SCANDIC

Part of Europa Biosite

Produktinformation



Forschungsprodukte & Biochemikalien



Zellkultur & Verbrauchsmaterial



Diagnostik & molekulare Diagnostik



Laborgeräte & Service

Weitere Information auf den folgenden Seiten!
See the following pages for more information!



Lieferung & Zahlungsart

siehe unsere [Liefer- und Versandbedingungen](#)

Zuschläge

- Mindermengenzuschlag
- Trockeneiszuschlag
- Gefahrgutzuschlag
- Expressversand

SZABO-SCANDIC HandelsgmbH

Quellenstraße 110, A-1100 Wien

T. +43(0)1 489 3961-0

F. +43(0)1 489 3961-7

mail@szabo-scandic.com

www.szabo-scandic.com

[linkedin.com/company/szaboscandic](https://www.linkedin.com/company/szaboscandic) 

PLAT (Human) IP-WB Antibody Pair

Catalog # : H00005327-PW1

規格 : [1 Set]

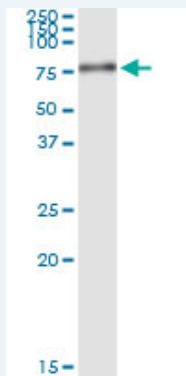
List All

Specification

Product Description: This IP-WB antibody pair set comes with one antibody for immunoprecipitation and another to detect the precipitated protein in western blot.

Reactivity: Human

Quality Control Testing: Immunoprecipitation-Western Blot (IP-WB)



Immunoprecipitation of PLAT transfected lysate using rabbit polyclonal anti-PLAT and Protein A Magnetic Bead ([U0007](#)), and immunoblotted with mouse polyclonal anti-PLAT.

Supplied Product: Antibody pair set content:
1. Antibody pair for IP: rabbit polyclonal anti-PLAT (300 ul)
2. Antibody pair for WB: mouse polyclonal anti-PLAT (50 ul)

Storage Instruction: Store reagents of the antibody pair set at -20°C or lower. Please aliquot to avoid repeated freeze thaw cycle. Reagents should be returned to -20°C storage immediately after use.

MSDS:  [Download](#)

Applications

Immunoprecipitation-Western Blot

 [Protocol Download](#)

Gene Information

Entrez GeneID: [5327](#)

Gene Name: PLAT

Gene Alias: DKFZp686I03148,T-PA,TPA

Gene Description: plasminogen activator, tissue

Omim ID: [173370](#)

Gene Ontology: [Hyperlink](#)

Application Image

Immunoprecipitation-Western Blot

Gene Summary: This gene encodes tissue-type plasminogen activator, a secreted serine protease which converts the proenzyme plasminogen to plasmin, a fibrinolytic enzyme. Tissue-type plasminogen activator is synthesized as a single chain which is cleaved by plasmin to a two chain disulfide linked protein. This enzyme plays a role in cell migration and tissue remodeling. Increased enzymatic activity causes hyperfibrinolysis, which manifests as excessive bleeding; decreased activity leads to hypofibrinolysis which can result in thrombosis or embolism. Alternative splicing of this gene results in multiple transcript variants encoding different isoforms. [provided by RefSeq]

Other Designations: alteplase, plasminogen activator, tissue type, reteplase, t-plasminogen activator, tissue plasminogen activator (t-PA)

Gene Pathway

[Complement and coagulation cascades](#)

Related Disease

[Alzheimer Disease](#) [Alzheimer disease](#) [Amphetamine-Related Disorders](#)
[Aneurysm, Ruptured](#) [Arterial Occlusive Diseases](#) [Arteriosclerosis](#) [Arthritis, Rheumatoid](#)
[Atherosclerosis](#) [Atherosclerosis](#) [Brain Infarction](#) [Brain Ischemia](#) [Calcinosis](#)
[Cardiovascular Diseases](#) [Cerebral Palsy](#) [Cerebrovascular Accident](#) [Chorioamnionitis](#)
[Connective Tissue Diseases](#) [Coronary Artery Disease](#) [Coronary Disease](#)

... see more

[服務條款](#) | [隱私權政策](#) | [著作及商標](#) | [網站地圖](#)

©2016 亞諾法生技股份有限公司 Abnova Corporation. 版權所有.