



SZABO SCANDIC

Part of Europa Biosite

Produktinformation



Forschungsprodukte & Biochemikalien



Zellkultur & Verbrauchsmaterial



Diagnostik & molekulare Diagnostik



Laborgeräte & Service

Weitere Information auf den folgenden Seiten!
See the following pages for more information!



Lieferung & Zahlungsart

siehe unsere [Liefer- und Versandbedingungen](#)

Zuschläge

- Mindermengenzuschlag
- Trockeneiszuschlag
- Gefahrgutzuschlag
- Expressversand

SZABO-SCANDIC HandelsgmbH

Quellenstraße 110, A-1100 Wien

T. +43(0)1 489 3961-0

F. +43(0)1 489 3961-7

mail@szabo-scandic.com

www.szabo-scandic.com

[linkedin.com/company/szaboscandic](https://www.linkedin.com/company/szaboscandic) 

PLCG2 (Human) IP-WB Antibody Pair

Catalog # : H00005336-PW1

規格 : [1 Set]

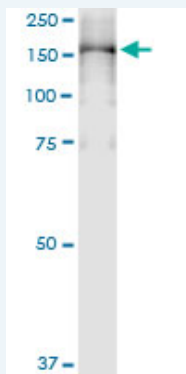
[List All](#)

Specification

Product Description: This IP-WB antibody pair set comes with one antibody for immunoprecipitation and another to detect the precipitated protein in western blot.

Reactivity: Human

Quality Control Testing: Immunoprecipitation-Western Blot (IP-WB)



Immunoprecipitation of PLCG2 transfected lysate using rabbit polyclonal anti-PLCG2 and Protein A Magnetic Bead ([U0007](#)), and immunoblotted with mouse purified polyclonal anti-PLCG2.

Supplied Product: Antibody pair set content:
 1. Antibody pair for IP: rabbit polyclonal anti-PLCG2 (300 ul)
 2. Antibody pair for WB: mouse purified polyclonal anti-PLCG2 (50 ug)

Storage Instruction: Store reagents of the antibody pair set at -20°C or lower. Please aliquot to avoid repeated freeze thaw cycle. Reagents should be returned to -20°C storage immediately after use.

Applications

Immunoprecipitation-Western Blot

 [Protocol Download](#)

Gene Information

Entrez GeneID: [5336](#)

Gene Name: PLCG2

Gene Alias: -

Gene Description: phospholipase C, gamma 2 (phosphatidylinositol-specific)

Omim ID: [600220](#)

Gene Ontology: [Hyperlink](#)

Gene Summary: Enzymes of the phospholipase C family catalyze the hydrolysis of

phospholipids to yield diacylglycerols and water-soluble phosphorylated derivatives of the lipid head groups. A number of these enzymes have specificity for phosphoinositides. Of the phosphoinositide-specific phospholipase C enzymes, C-beta is regulated by heterotrimeric G protein-coupled receptors, while the closely related C-gamma-1 (PLCG1; MIM 172420) and C-gamma-2 enzymes are controlled by receptor tyrosine kinases. The C-gamma-1 and C-gamma-2 enzymes are composed of phospholipase domains that flank regions of homology to noncatalytic domains of the SRC oncogene product, SH2 and SH3. [supplied by OMIM]

Other phospholipase C gamma 2, phospholipase C, gamma 2, phospholipase
Designations: C, gamma 2 (phosphatidylinositol-specific)

Gene Pathway

[B cell receptor signaling pathway](#) [Calcium signaling pathway](#)
[Epithelial cell signaling in Helicobacter pylori infection](#) [ErbB signaling pathway](#)
[Fc epsilon RI signaling pathway](#) [Fc gamma R-mediated phagocytosis](#) [Glioma](#)
[Inositol phosphate metabolism](#) [Leukocyte transendothelial migration](#) [Metabolic pathways](#)
[Natural killer cell mediated cytotoxicity](#) [Neurotrophin signaling pathway](#)
[Non-small cell lung cancer](#) [Pathways in cancer](#) [Phosphatidylinositol signaling system](#)
[VEGF signaling pathway](#) [Vibrio cholerae infection](#)

Related Disease

[Bipolar Disorder](#) [Breast cancer](#) [Breast Neoplasms](#) [Genetic Predisposition to Disease](#)
[HIV Infections](#) [Mental Disorders](#) [Ovarian cancer](#) [Tobacco Use Disorder](#)

[服務條款](#) | [隱私權政策](#) | [著作及商標](#) | [網站地圖](#)

©2016 亞諾法生技股份有限公司 Abnova Corporation. 版權所有.