



SZABO SCANDIC

Part of Europa Biosite

Produktinformation



Forschungsprodukte & Biochemikalien



Zellkultur & Verbrauchsmaterial



Diagnostik & molekulare Diagnostik



Laborgeräte & Service

Weitere Information auf den folgenden Seiten!
See the following pages for more information!



Lieferung & Zahlungsart

siehe unsere [Liefer- und Versandbedingungen](#)

Zuschläge

- Mindermengenzuschlag
- Trockeneiszuschlag
- Gefahrgutzuschlag
- Expressversand

SZABO-SCANDIC HandelsgmbH

Quellenstraße 110, A-1100 Wien

T. +43(0)1 489 3961-0

F. +43(0)1 489 3961-7

mail@szabo-scandic.com

www.szabo-scandic.com

[linkedin.com/company/szaboscandic](https://www.linkedin.com/company/szaboscandic) 

PLG (Human) IP-WB Antibody Pair

Catalog # : H00005340-PW1

規格 : [1 Set]

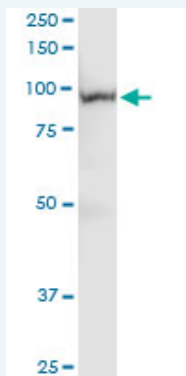
[List All](#)

Specification

Product Description: This IP-WB antibody pair set comes with one antibody for immunoprecipitation and another to detect the precipitated protein in western blot.

Reactivity: Human

Quality Control Testing: Immunoprecipitation-Western Blot (IP-WB)



Immunoprecipitation of PLG transfected lysate using rabbit polyclonal anti-PLG and Protein A Magnetic Bead ([U0007](#)), and immunoblotted with mouse purified polyclonal anti-PLG.

Supplied Product: Antibody pair set content:
 1. Antibody pair for IP: rabbit polyclonal anti-PLG (300 ul)
 2. Antibody pair for WB: mouse purified polyclonal anti-PLG (50 ug)

Storage Instruction: Store reagents of the antibody pair set at -20°C or lower. Please aliquot to avoid repeated freeze thaw cycle. Reagents should be returned to -20°C storage immediately after use.

MSDS:  [Download](#)

Applications

Immunoprecipitation-Western Blot

 [Protocol Download](#)

Gene Information

Entrez GeneID: [5340](#)

Gene Name: PLG

Gene Alias: [DKFZp779M0222](#)

Gene Description: plasminogen

Omim ID: [173350](#), [217090](#)

Gene Ontology: [Hyperlink](#)

Application Image

Immunoprecipitation-Western Blot

Gene Summary: Plasminogen (PLG) is a circulating zymogen that is converted to the active enzyme plasmin by cleavage of the peptide bond between arg560 and val561, which is mediated by urokinase (PLAU; MIM 191840) and tissue plasminogen activator (PLAT; MIM 173370). The main function of plasmin is to dissolve fibrin (see, e.g., FGA, MIM 134820) clots. Plasmin, like trypsin, belongs to the family of serine proteinases (Miyata et al., 1982 [PubMed 6216475]; Forsgren et al., 1987 [PubMed 3030813]). [supplied by OMIM]

Other OTTHUMP00000017544

Designations:

Gene Pathway

[Complement and coagulation cascades](#) [Neuroactive ligand-receptor interaction](#)

Related Disease

[Alzheimer Disease](#) [Alzheimer disease](#) [Aspergillosis](#) [Cardiovascular Diseases](#)
[Carotid Artery Diseases](#) [Carotid Stenosis](#) [Diabetes Mellitus, Type 2](#) [Edema](#)
[Genetic Predisposition to Disease](#) [Inflammation](#) [Liver Cirrhosis](#) [Lung Diseases](#), [Fungal](#)
[Premature Birth](#) [Venous Thrombosis](#)

[服務條款](#) | [隱私權政策](#) | [著作及商標](#) | [網站地圖](#)

©2016 亞諾法生技股份有限公司 Abnova Corporation. 版權所有.