



SZABO SCANDIC

Part of Europa Biosite

Produktinformation



Forschungsprodukte & Biochemikalien



Zellkultur & Verbrauchsmaterial



Diagnostik & molekulare Diagnostik



Laborgeräte & Service

Weitere Information auf den folgenden Seiten!
See the following pages for more information!



Lieferung & Zahlungsart

siehe unsere [Liefer- und Versandbedingungen](#)

Zuschläge

- Mindermengenzuschlag
- Trockeneiszuschlag
- Gefahrgutzuschlag
- Expressversand

SZABO-SCANDIC HandelsgmbH

Quellenstraße 110, A-1100 Wien

T. +43(0)1 489 3961-0

F. +43(0)1 489 3961-7

mail@szabo-scandic.com

www.szabo-scandic.com

[linkedin.com/company/szaboscandic](https://www.linkedin.com/company/szaboscandic) 

PLK1 (Human) IP-WB Antibody Pair

Catalog # : H00005347-PW1

規格 : [1 Set]

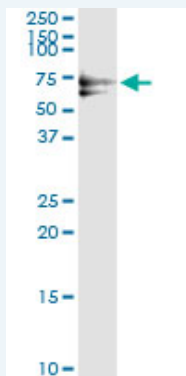
[List All](#)

Specification

Product Description: This IP-WB antibody pair set comes with one antibody for immunoprecipitation and another to detect the precipitated protein in western blot.

Reactivity: Human

Quality Control Testing: Immunoprecipitation-Western Blot (IP-WB)



Immunoprecipitation of PLK1 transfected lysate using mouse monoclonal anti-PLK1 and Protein A Magnetic Bead ([U0007](#)), and immunoblotted with rabbit polyclonal anti-PLK1.

Supplied Product: Antibody pair set content:
1. Antibody pair for IP: mouse monoclonal anti-PLK1 (300 ug)
2. Antibody pair for WB: rabbit polyclonal anti-PLK1 (50 ul)

Storage Instruction: Store reagents of the antibody pair set at -20°C or lower. Please aliquot to avoid repeated freeze thaw cycle. Reagents should be returned to -20°C storage immediately after use.

MSDS:  [Download](#)

Applications

Immunoprecipitation-Western Blot

 [Protocol Download](#)

Gene Information

Entrez GeneID: [5347](#)

Gene Name: PLK1

Gene Alias: PLK,STPK13

Gene Description: polo-like kinase 1 (Drosophila)

Omim ID: [602098](#)

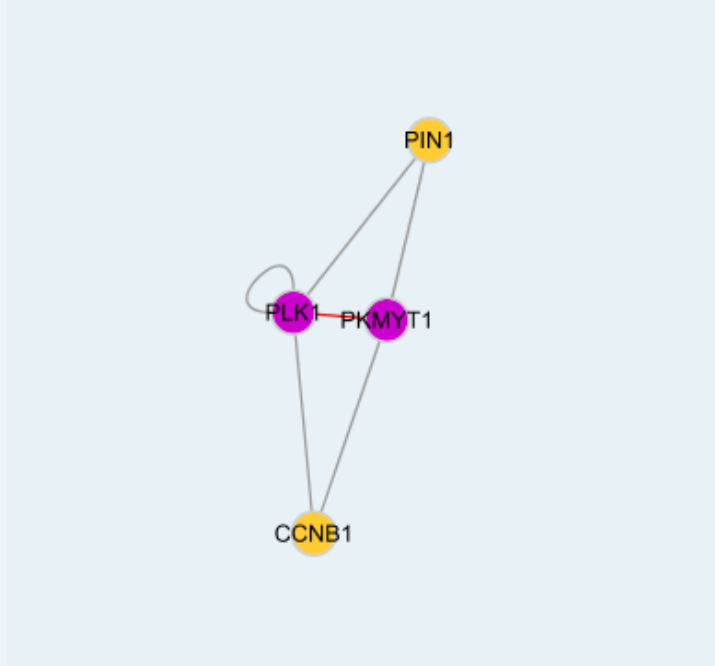
Gene Ontology: [Hyperlink](#)

Application Image

Immunoprecipitation-Western Blot

Other cell cycle regulated protein kinase,polo (Drosophia)-like kinase,polo like
Designations: kinase,polo-like kinase

Interactome



Gene Pathway

Cell cycle

Related Disease

Breast cancer Breast Neoplasms Genetic Predisposition to Disease
Head and Neck Neoplasms Lung Neoplasms Neoplasm Recurrence, Local
Neoplasms, Second Primary Ovarian Neoplasms Pulmonary Disease, Chronic Obstructive
Urinary Bladder Neoplasms Werner syndrome

[服務條款](#) | [隱私權政策](#) | [著作及商標](#) | [網站地圖](#)

©2016 亞諾法生技股份有限公司 Abnova Corporation. 版權所有.