



SZABO SCANDIC

Part of Europa Biosite

Produktinformation



Forschungsprodukte & Biochemikalien



Zellkultur & Verbrauchsmaterial



Diagnostik & molekulare Diagnostik



Laborgeräte & Service

Weitere Information auf den folgenden Seiten!
See the following pages for more information!



Lieferung & Zahlungsart

siehe unsere [Liefer- und Versandbedingungen](#)

Zuschläge

- Mindermengenzuschlag
- Trockeneiszuschlag
- Gefahrgutzuschlag
- Expressversand

SZABO-SCANDIC HandelsgmbH

Quellenstraße 110, A-1100 Wien

T. +43(0)1 489 3961-0

F. +43(0)1 489 3961-7

mail@szabo-scandic.com

www.szabo-scandic.com

[linkedin.com/company/szaboscandic](https://www.linkedin.com/company/szaboscandic) 

PNMT (Human) IP-WB Antibody Pair

Catalog # : H00005409-PW1

規格 : [1 Set]

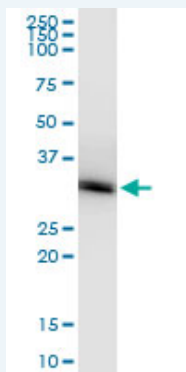
List All

Specification

Product Description: This IP-WB antibody pair set comes with one antibody for immunoprecipitation and another to detect the precipitated protein in western blot.

Reactivity: Human

Quality Control Testing: Immunoprecipitation-Western Blot (IP-WB)



Immunoprecipitation of PNMT transfected lysate using rabbit polyclonal anti-PNMT and Protein A Magnetic Bead ([U0007](#)), and immunoblotted with mouse polyclonal anti-PNMT.

Supplied Product: Antibody pair set content:
1. Antibody pair for IP: rabbit polyclonal anti-PNMT (300 ul)
2. Antibody pair for WB: mouse polyclonal anti-PNMT (50 ul)

Storage Instruction: Store reagents of the antibody pair set at -20°C or lower. Please aliquot to avoid repeated freeze thaw cycle. Reagents should be returned to -20°C storage immediately after use.

MSDS:  [Download](#)

Applications

Immunoprecipitation-Western Blot

 [Protocol Download](#)

Gene Information

Entrez GeneID: [5409](#)

Gene Name: PNMT

Gene Alias: MGC34570,PENT,PNMTase

Gene Description: phenylethanolamine N-methyltransferase

Omim ID: [171190](#)

Gene Ontology: [Hyperlink](#)

Application Image

Immunoprecipitation-Western Blot

Gene Summary: The product of this gene catalyzes the last step of the catecholamine biosynthesis pathway, which methylates norepinephrine to form epinephrine (adrenaline). The enzyme also has beta-carboline 2N-methyltransferase activity. This gene is thought to play a key step in regulating epinephrine production. [provided by RefSeq]

Other Designations: OTTHUMP00000164271,noradrenaline N-methyltransferase,phenylethanolamine N-methylase

Gene Pathway

[Metabolic pathways](#) [Tyrosine metabolism](#)

Related Disease

[Alzheimer Disease](#) [Alzheimer disease](#) [Anorexia Nervosa](#)
[Attention Deficit Disorder with Hyperactivity](#) [Behavior Therapy](#) [Breast cancer](#)
[Breast Neoplasms](#) [Bulimia](#) [Cardiovascular Diseases](#) [Diabetes Mellitus, Type 2](#) [Edema](#)
[Genetic Predisposition to Disease](#) [Hypertension](#) [Mental Disorders](#) [Multiple Sclerosis](#)
[Obesity](#) [Obesity](#) [Personality Inventory](#) [Reward](#)

... see more

[服務條款](#) | [隱私權政策](#) | [著作及商標](#) | [網站地圖](#)

©2016 亞諾法生技股份有限公司 Abnova Corporation. 版權所有.