



SZABO SCANDIC

Part of Europa Biosite

Produktinformation



Forschungsprodukte & Biochemikalien



Zellkultur & Verbrauchsmaterial



Diagnostik & molekulare Diagnostik



Laborgeräte & Service

Weitere Information auf den folgenden Seiten!
See the following pages for more information!



Lieferung & Zahlungsart

siehe unsere [Liefer- und Versandbedingungen](#)

Zuschläge

- Mindermengenzuschlag
- Trockeneiszuschlag
- Gefahrgutzuschlag
- Expressversand

SZABO-SCANDIC HandelsgmbH

Quellenstraße 110, A-1100 Wien

T. +43(0)1 489 3961-0

F. +43(0)1 489 3961-7

mail@szabo-scandic.com

www.szabo-scandic.com

[linkedin.com/company/szaboscandic](https://www.linkedin.com/company/szaboscandic) 

POLB (Human) IP-WB Antibody Pair

Catalog # : H00005423-PW1

規格 : [1 Set]

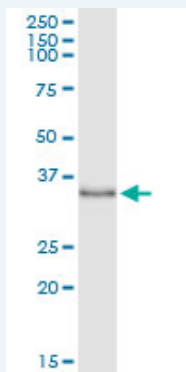
List All

Specification

Product Description: This IP-WB antibody pair set comes with one antibody for immunoprecipitation and another to detect the precipitated protein in western blot.

Reactivity: Human

Quality Control Testing: Immunoprecipitation-Western Blot (IP-WB)



Immunoprecipitation of POLB transfected lysate using rabbit polyclonal anti-POLB and Protein A Magnetic Bead ([U0007](#)), and immunoblotted with mouse polyclonal anti-POLB.

Supplied Product: Antibody pair set content:
 1. Antibody pair for IP: rabbit polyclonal anti-POLB (300 ul)
 2. Antibody pair for WB: mouse polyclonal anti-POLB (50 ul)

Storage Instruction: Store reagents of the antibody pair set at -20°C or lower. Please aliquot to avoid repeated freeze thaw cycle. Reagents should be returned to -20°C storage immediately after use.

MSDS:  [Download](#)

Applications

Immunoprecipitation-Western Blot

 [Protocol Download](#)

Gene Information

Entrez GeneID: [5423](#)

Gene Name: POLB

Gene Alias: MGC125976

Gene Description: polymerase (DNA directed), beta

Omim ID: [174760](#)

Gene Ontology: [Hyperlink](#)

Application Image

Immunoprecipitation-Western Blot

Gene Summary: In eukaryotic cells, DNA polymerase beta (POLB) performs base excision repair (BER) required for DNA maintenance, replication, recombination, and drug resistance. Also see POLA (MIM 312040). [supplied by OMIM]

Other Designations: DNA pol beta, DNA polymerase beta subunit

Gene Pathway

[Base excision repair](#)

Related Disease

[Adenocarcinoma](#) [Adenomyoma](#) [Ataxia telangiectasia](#) [Brain Neoplasms](#) [Breast cancer](#) [Breast Neoplasms](#) [Carcinoma, Non-Small-Cell Lung](#) [Carcinoma, Pancreatic Ductal](#) [Colorectal Neoplasms](#) [DNA Damage](#) [Esophageal Neoplasms](#) [Genetic Predisposition to Disease](#) [Glioma](#) [Graft vs Host Disease](#) [Head and Neck Neoplasms](#) [Kidney Failure, Chronic](#) [Laryngeal Neoplasms](#) [Leukemia, Lymphocytic, Chronic, B-Cell](#) [Lung Neoplasms](#)

... see more

[服務條款](#) | [隱私權政策](#) | [著作及商標](#) | [網站地圖](#)

©2016 亞諾法生技股份有限公司 Abnova Corporation. 版權所有.