



SZABO SCANDIC

Part of Europa Biosite

Produktinformation



Forschungsprodukte & Biochemikalien



Zellkultur & Verbrauchsmaterial



Diagnostik & molekulare Diagnostik



Laborgeräte & Service

Weitere Information auf den folgenden Seiten!
See the following pages for more information!



Lieferung & Zahlungsart

siehe unsere [Liefer- und Versandbedingungen](#)

Zuschläge

- Mindermengenzuschlag
- Trockeneiszuschlag
- Gefahrgutzuschlag
- Expressversand

SZABO-SCANDIC HandelsgmbH

Quellenstraße 110, A-1100 Wien

T. +43(0)1 489 3961-0

F. +43(0)1 489 3961-7

mail@szabo-scandic.com

www.szabo-scandic.com

[linkedin.com/company/szaboscandic](https://www.linkedin.com/company/szaboscandic) 

POMC (Human) IP-WB Antibody Pair

Catalog # : H00005443-PW1

規格 : [1 Set]

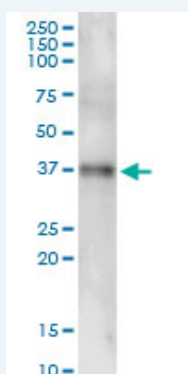
[List All](#)

Specification

Product Description: This IP-WB antibody pair set comes with one antibody for immunoprecipitation and another to detect the precipitated protein in western blot.

Reactivity: Human

Quality Control Testing: Immunoprecipitation-Western Blot (IP-WB)



Immunoprecipitation of POMC transfected lysate using rabbit polyclonal anti-POMC and Protein A Magnetic Bead ([U0007](#)), and immunoblotted with mouse polyclonal anti-POMC.


Supplied Product: Antibody pair set content:
1. Antibody pair for IP: rabbit polyclonal anti-POMC (300 ul)
2. Antibody pair for WB: mouse polyclonal anti-POMC (50 ul)

Storage Instruction: Store reagents of the antibody pair set at -20°C or lower. Please aliquot to avoid repeated freeze thaw cycle. Reagents should be returned to -20°C storage immediately after use.

MSDS:  [Download](#)

Applications

Immunoprecipitation-Western Blot

 [Protocol Download](#)

Gene Information

Entrez GeneID: [5443](#)

Gene Name: POMC

Gene Alias: ACTH,CLIP,LPH,MSH,NPP,POC

Gene Description: proopiomelanocortin

Omim ID: [176830](#), [609830](#)

Gene Ontology: [Hyperlink](#)

Application Image

Immunoprecipitation-Western Blot

Gene Summary: This gene encodes a polypeptide hormone precursor that undergoes extensive, tissue-specific, post-translational processing via cleavage by subtilisin-like enzymes known as prohormone convertases. There are eight potential cleavage sites within the polypeptide precursor and, depending on tissue type and the available convertases, processing may yield as many as ten biologically active peptides involved in diverse cellular functions. The encoded protein is synthesized mainly in corticotroph cells of the anterior pituitary where four cleavage sites are used; adrenocorticotrophin, essential for normal steroidogenesis and the maintenance of normal adrenal weight, and lipotropin beta are the major end products. In other tissues, including the hypothalamus, placenta, and epithelium, all cleavage sites may be used, giving rise to peptides with roles in pain and energy homeostasis, melanocyte stimulation, and immune modulation. These include several distinct melanotropins, lipotropins, and endorphins that are contained within the adrenocorticotrophin and beta-lipotropin peptides. Mutations in this gene have been associated with early onset obesity, adrenal insufficiency, and red hair pigmentation. Alternatively spliced transcript variants encoding the same protein have been described. [provided by RefSeq]

Other Designations: OTTHUMP00000119991,adrenocorticotrophic hormone,adrenocorticotropin,alpha-MSH,alpha-melanocyte-stimulating hormone,beta-LPH,beta-MSH,beta-endorphin,beta-melanocyte-stimulating hormone,corticotropin-like intermediary peptide,gamma-LPH,gamma-MSH,lipotropin b

Gene Pathway

[Adipocytokine signaling pathway](#) [Melanogenesis](#) [Neuroactive ligand-receptor interaction](#)

Related Disease

[Adenocarcinoma](#) [Alcoholism](#) [Anorexia Nervosa](#) [Asthma](#) [Asthma](#) [Atherosclerosis](#) [Attention Deficit Disorder with Hyperactivity](#) [Autistic Disorder](#) [Body Weight](#) [Breast Neoplasms](#) [Bulimia](#) [Carcinoma, Basal Cell](#) [Carcinoma, Squamous Cell](#) [Cardiovascular Diseases](#) [Chronic Disease](#) [Colon cancer](#) [Colonic Neoplasms](#) [Connective Tissue Diseases](#) [Diabetes Mellitus](#)

... see more