



SZABO SCANDIC

Part of Europa Biosite

Produktinformation



Forschungsprodukte & Biochemikalien



Zellkultur & Verbrauchsmaterial



Diagnostik & molekulare Diagnostik



Laborgeräte & Service

Weitere Information auf den folgenden Seiten!
See the following pages for more information!



Lieferung & Zahlungsart

siehe unsere [Liefer- und Versandbedingungen](#)

Zuschläge

- Mindermengenzuschlag
- Trockeneiszuschlag
- Gefahrgutzuschlag
- Expressversand

SZABO-SCANDIC HandelsgmbH

Quellenstraße 110, A-1100 Wien

T. +43(0)1 489 3961-0

F. +43(0)1 489 3961-7

mail@szabo-scandic.com

www.szabo-scandic.com

[linkedin.com/company/szaboscandic](https://www.linkedin.com/company/szaboscandic) 

PPP1R3C (Human) IP-WB Antibody Pair

Catalog # : H00005507-PW1

規格 : [1 Set]

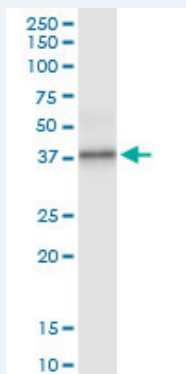
[List All](#)

Specification

Product Description: This IP-WB antibody pair set comes with one antibody for immunoprecipitation and another to detect the precipitated protein in western blot.

Reactivity: Human

Quality Control Testing: Immunoprecipitation-Western Blot (IP-WB)



Immunoprecipitation of PPP1R3C transfected lysate using rabbit polyclonal anti-PPP1R3C and Protein A Magnetic Bead (U0007), and immunoblotted with mouse purified polyclonal anti-PPP1R3C.

Supplied Product: Antibody pair set content:
 1. Antibody pair for IP: rabbit polyclonal anti-PPP1R3C (300 ul)
 2. Antibody pair for WB: mouse purified polyclonal anti-PPP1R3C (50 ug)

Storage Instruction: Store reagents of the antibody pair set at -20°C or lower. Please aliquot to avoid repeated freeze thaw cycle. Reagents should be returned to -20°C storage immediately after use.

MSDS: [Download](#)

Applications

Immunoprecipitation-Western Blot

[Protocol Download](#)

Gene Information

Entrez GeneID: [5507](#)

Gene Name: PPP1R3C

Gene Alias: PPP1R5

Gene Description: protein phosphatase 1, regulatory (inhibitor) subunit 3C

Omim ID: [602999](#)

Application Image

Immunoprecipitation-Western Blot

Gene Ontology: [Hyperlink](#)

Gene Summary: Protein phosphatase-1 (PP1; see MIM 176875) participates in the regulation of a wide variety of cellular functions by reversible protein phosphorylation. The ability of PP1 to regulate diverse functions resides in its capacity to interact with a variety of regulatory subunits that may target PP1 to specific subcellular locations, modulate its substrate specificity, and allow its activity to be responsive to extracellular signals. Several targeting subunits of PP1 have been identified, including PPP1R5, the glycogen-binding subunits PPP1R3 (MIM 600917) and PPP1R4, and the nuclear inhibitor of PP1 (PPP1R8; MIM 602636).
[supplied by OMIM]

Other OTTHUMP00000020089, Phosphatase 1, regulatory inhibitor subunit
Designations: 5, protein targeting to glycogen

Gene Pathway

[Insulin signaling pathway](#)

Related Disease

[Alzheimer Disease](#) [Genetic Predisposition to Disease](#)

[服務條款](#) | [隱私權政策](#) | [著作及商標](#) | [網站地圖](#)

©2016 亞諾法生技股份有限公司 Abnova Corporation. 版權所有.