



# SZABO SCANDIC

Part of Europa Biosite

## Produktinformation



Forschungsprodukte & Biochemikalien



Zellkultur & Verbrauchsmaterial



Diagnostik & molekulare Diagnostik



Laborgeräte & Service

Weitere Information auf den folgenden Seiten!  
See the following pages for more information!



### Lieferung & Zahlungsart

siehe unsere [Liefer- und Versandbedingungen](#)

### Zuschläge

- Mindermengenzuschlag
- Trockeneiszuschlag
- Gefahrgutzuschlag
- Expressversand

### SZABO-SCANDIC HandelsgmbH

Quellenstraße 110, A-1100 Wien

T. +43(0)1 489 3961-0

F. +43(0)1 489 3961-7

[mail@szabo-scandic.com](mailto:mail@szabo-scandic.com)

[www.szabo-scandic.com](http://www.szabo-scandic.com)

[linkedin.com/company/szaboscandic](https://www.linkedin.com/company/szaboscandic) 

## PPP2R1B (Human) IP-WB Antibody Pair

Catalog # : H00005519-PW1

規格 : [ 1 Set ]

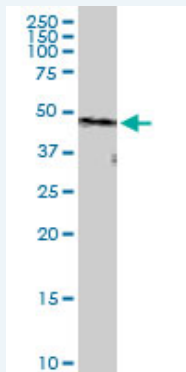
[List All](#)

### Specification

**Product Description:** This IP-WB antibody pair set comes with one antibody for immunoprecipitation and another to detect the precipitated protein in western blot.

**Reactivity:** Human

**Quality Control Testing:** Immunoprecipitation-Western Blot (IP-WB)



Immunoprecipitation of PPP2R1B transfected lysate using rabbit polyclonal anti-PPP2R1B and Protein A Magnetic Bead (U0007), and immunoblotted with mouse purified polyclonal anti-PPP2R1B.

**Supplied Product:** Antibody pair set content:  
 1. Antibody pair for IP: rabbit polyclonal anti-PPP2R1B (300 ul)  
 2. Antibody pair for WB: mouse purified polyclonal anti-PPP2R1B (50 ug)

**Storage Instruction:** Store reagents of the antibody pair set at -20°C or lower. Please aliquot to avoid repeated freeze thaw cycle. Reagents should be returned to -20°C storage immediately after use.

**MSDS:** [Download](#)

### Applications

**Immunoprecipitation-Western Blot**

[Protocol Download](#)

### Gene Information

**Entrez GeneID:** [5519](#)

**Gene Name:** PPP2R1B

**Gene Alias:** MGC26454, PR65B

**Gene Description:** protein phosphatase 2 (formerly 2A), regulatory subunit A, beta isoform

**Omim ID:** [211980](#), [603113](#)

### Application Image

Immunoprecipitation-Western Blot

**Gene Ontology:** [Hyperlink](#)

**Gene Summary:** This gene encodes a constant regulatory subunit of protein phosphatase 2. Protein phosphatase 2 is one of the four major Ser/Thr phosphatases, and it is implicated in the negative control of cell growth and division. It consists of a common heteromeric core enzyme, which is composed of a catalytic subunit and a constant regulatory subunit, that associates with a variety of regulatory subunits. The constant regulatory subunit A serves as a scaffolding molecule to coordinate the assembly of the catalytic subunit and a variable regulatory B subunit. This gene encodes a beta isoform of the constant regulatory subunit A. Defects in this gene could be the cause of some lung and colon cancers. At least two transcript variants encoding different isoforms have been found for this gene. [provided by RefSeq]

**Other Designations:** PP2A, subunit A, PR65-beta isoform, PP2A, subunit A, R1-beta isoform, PP2A-A-beta, beta isoform of regulatory subunit A, protein phosphatase 2, protein phosphatase 2 (formerly 2A), regulatory subunit A (PR 65), beta isoform, protein phosphatase 2, structural/r

### Gene Pathway

[Long-term depression](#) [TGF-beta signaling pathway](#) [Tight junction](#) [Wnt signaling pathway](#)

### Related Disease

[Breast cancer](#) [Breast Neoplasms](#) [Genetic Predisposition to Disease](#) [Lung Neoplasms](#)  
[Tobacco Use Disorder](#) [Uterine Cervical Neoplasms](#)

[服務條款](#) | [隱私權政策](#) | [著作及商標](#) | [網站地圖](#)

©2016 亞諾法生技股份有限公司 Abnova Corporation. 版權所有.