



# SZABO SCANDIC

Part of Europa Biosite

## Produktinformation



Forschungsprodukte & Biochemikalien



Zellkultur & Verbrauchsmaterial



Diagnostik & molekulare Diagnostik



Laborgeräte & Service

Weitere Information auf den folgenden Seiten!  
See the following pages for more information!



### Lieferung & Zahlungsart

siehe unsere [Liefer- und Versandbedingungen](#)

### Zuschläge

- Mindermengenzuschlag
- Trockeneiszuschlag
- Gefahrgutzuschlag
- Expressversand

### SZABO-SCANDIC HandelsgmbH

Quellenstraße 110, A-1100 Wien

T. +43(0)1 489 3961-0

F. +43(0)1 489 3961-7

[mail@szabo-scandic.com](mailto:mail@szabo-scandic.com)

[www.szabo-scandic.com](http://www.szabo-scandic.com)

[linkedin.com/company/szaboscandic](https://www.linkedin.com/company/szaboscandic) 

## PPP2R2B (Human) IP-WB Antibody Pair

Catalog # : H00005521-PW1

規格 : [ 1 Set ]

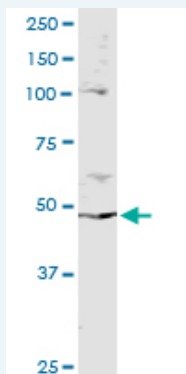
List All

### Specification

**Product Description:** This IP-WB antibody pair set comes with one antibody for immunoprecipitation and another to detect the precipitated protein in western blot.

**Reactivity:** Human

**Quality Control Testing:** Immunoprecipitation-Western Blot (IP-WB)



Immunoprecipitation of PPP2R2B transfected lysate using mouse monoclonal anti-PPP2R2B and Protein A Magnetic Bead ([U0007](#)), and immunoblotted with rabbit polyclonal anti-PPP2R2B.

**Supplied Product:** Antibody pair set content:  
1. Antibody pair for IP: mouse monoclonal anti-PPP2R2B (300 ug)  
2. Antibody pair for WB: rabbit polyclonal anti-PPP2R2B (50 ul)

**Storage Instruction:** Store reagents of the antibody pair set at -20°C or lower. Please aliquot to avoid repeated freeze thaw cycle. Reagents should be returned to -20°C storage immediately after use.

**MSDS:**  [Download](#)

### Applications

Immunoprecipitation-Western Blot

 [Protocol Download](#)

### Gene Information

**Entrez GeneID:** [5521](#)

**Gene Name:** PPP2R2B

**Gene Alias:** B55-BETA, FLJ95686, MGC24888, PP2A-B55BETA, PP2A-PR55B, PP2AB-BETA, PP2APR55-BETA, PR2AB-BETA, PR2AB55-BETA, PR2APR55-BETA, PR52B, PR55-BETA, SCA12

**Gene Description:** protein phosphatase 2 (formerly 2A), regulatory subunit B, beta isoform

**Omim ID:** [604325](#), [604326](#)

### Application Image

Immunoprecipitation-Western Blot

**Gene Ontology:** [Hyperlink](#)

**Gene Summary:** The product of this gene belongs to the phosphatase 2 regulatory subunit B family. Protein phosphatase 2 is one of the four major Ser/Thr phosphatases, and it is implicated in the negative control of cell growth and division. It consists of a common heteromeric core enzyme, which is composed of a catalytic subunit and a constant regulatory subunit, that associates with a variety of regulatory subunits. The B regulatory subunit might modulate substrate selectivity and catalytic activity. This gene encodes a beta isoform of the regulatory subunit B55 subfamily. Defects in this gene cause autosomal dominant spinocerebellar ataxia 12 (SCA12), a disease caused by degeneration of the cerebellum, sometimes involving the brainstem and spinal cord, and in resulting in poor coordination of speech and body movements. Multiple alternatively spliced variants, which encode different isoforms, have been identified for this gene. The 5' UTR of some of these variants includes a CAG trinucleotide repeat sequence (7-28 copies) that can be expanded to 66-78 copies in cases of SCA12. [provided by RefSeq]

**Other Designations:** PP2A, subunit B, B-beta isoform, PP2A, subunit B, R2-beta isoform, beta isoform of regulatory subunit B55, protein phosphatase 2, protein phosphatase 2 (formerly 2A), regulatory subunit B (PR 52), beta isoform, serine/threonine protein phosphatase 2A, 55 kDa

### Gene Pathway

[Tight junction](#)

### Related Disease

[Alzheimer Disease](#) [Alzheimer disease](#) [Cardiovascular Diseases](#) [Cerebellar Ataxia](#) [Chronic Disease](#) [Diabetes Mellitus, Type 2](#) [Disease Progression](#) [Edema](#) [Essential Tremor](#) [Essential tremor](#) [Genetic Predisposition to Disease](#) [Genomic Instability](#) [Parkinson disease](#) [Schizophrenia](#) [Schizophrenia](#) [Spinocerebellar ataxia](#) [Spinocerebellar Ataxias](#) [Tobacco Use Disorder](#)

[服務條款](#) | [隱私權政策](#) | [著作及商標](#) | [網站地圖](#)

©2016 亞諾法生技股份有限公司 Abnova Corporation. 版權所有.