



# SZABO SCANDIC

Part of Europa Biosite

## Produktinformation



Forschungsprodukte & Biochemikalien



Zellkultur & Verbrauchsmaterial



Diagnostik & molekulare Diagnostik



Laborgeräte & Service

Weitere Information auf den folgenden Seiten!  
See the following pages for more information!



### Lieferung & Zahlungsart

siehe unsere [Liefer- und Versandbedingungen](#)

### Zuschläge

- Mindermengenzuschlag
- Trockeneiszuschlag
- Gefahrgutzuschlag
- Expressversand

### SZABO-SCANDIC HandelsgmbH

Quellenstraße 110, A-1100 Wien

T. +43(0)1 489 3961-0

F. +43(0)1 489 3961-7

[mail@szabo-scandic.com](mailto:mail@szabo-scandic.com)

[www.szabo-scandic.com](http://www.szabo-scandic.com)

[linkedin.com/company/szaboscandic](https://www.linkedin.com/company/szaboscandic) 

## PRKCH (Human) IP-WB Antibody Pair

Catalog # : H00005583-PW1

規格 : [ 1 Set ]

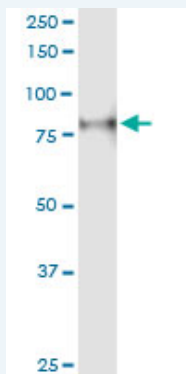
[List All](#)

### Specification

**Product Description:** This IP-WB antibody pair set comes with one antibody for immunoprecipitation and another to detect the precipitated protein in western blot.

**Reactivity:** Human

**Quality Control Testing:** Immunoprecipitation-Western Blot (IP-WB)



Immunoprecipitation of PRKCH transfected lysate using rabbit polyclonal anti-PRKCH and Protein A Magnetic Bead (U0007), and immunoblotted with mouse purified polyclonal anti-PRKCH.

**Supplied Product:** Antibody pair set content:  
1. Antibody pair for IP: rabbit polyclonal anti-PRKCH (300 ul)  
2. Antibody pair for WB: mouse purified polyclonal anti-PRKCH (50 ug)

**Storage Instruction:** Store reagents of the antibody pair set at -20°C or lower. Please aliquot to avoid repeated freeze thaw cycle. Reagents should be returned to -20°C storage immediately after use.

### Applications

Immunoprecipitation-Western Blot

 [Protocol Download](#)

### Gene Information

**Entrez GeneID:** [5583](#)

**Gene Name:** PRKCH

**Gene Alias:** MGC26269, MGC5363, PKC-L, PKCL, PRKCL, nPKC-eta

**Gene Description:** protein kinase C, eta

**Omim ID:** [601367](#), [605437](#)

**Gene Ontology:** [Hyperlink](#)

**Gene Summary:** Protein kinase C (PKC) is a family of serine- and threonine-specific

protein kinases that can be activated by calcium and the second messenger diacylglycerol. PKC family members phosphorylate a wide variety of protein targets and are known to be involved in diverse cellular signaling pathways. PKC family members also serve as major receptors for phorbol esters, a class of tumor promoters. Each member of the PKC family has a specific expression profile and is believed to play a distinct role in cells. The protein encoded by this gene is one of the PKC family members. It is a calcium-independent and phospholipids-dependent protein kinase. It is predominantly expressed in epithelial tissues and has been shown to reside specifically in the cell nucleus. This protein kinase can regulate keratinocyte differentiation by activating the MAP kinase MAPK13 (p38delta)-activated protein kinase cascade that targets CCAAT/enhancer-binding protein alpha (CEBPA). It is also found to mediate the transcription activation of the transglutaminase 1 (TGM1) gene. [provided by RefSeq]

**Other** protein kinase C eta type

**Designations:**

### Gene Pathway

[Tight junction](#) [Vascular smooth muscle contraction](#)

### Related Disease

[Arthritis, Rheumatoid](#) [Atherosclerosis](#) [Atherosclerosis](#) [Brain Infarction](#) [Brain Ischemia](#) [Cerebral Hemorrhage](#) [Depressive Disorder, Major](#) [Gastritis, Atrophic](#) [Genetic Predisposition to Disease](#) [Helicobacter Infections](#) [Hypertension](#) [Inflammation](#) [Narcolepsy](#) [Stomach Neoplasms](#) [Stroke](#) [Tobacco Use Disorder](#)

[服務條款](#) | [隱私權政策](#) | [著作及商標](#) | [網站地圖](#)

©2016 亞諾法生技股份有限公司 Abnova Corporation. 版權所有.