



SZABO SCANDIC

Part of Europa Biosite

Produktinformation



Forschungsprodukte & Biochemikalien



Zellkultur & Verbrauchsmaterial



Diagnostik & molekulare Diagnostik



Laborgeräte & Service

Weitere Information auf den folgenden Seiten!
See the following pages for more information!



Lieferung & Zahlungsart

siehe unsere [Liefer- und Versandbedingungen](#)

Zuschläge

- Mindermengenzuschlag
- Trockeneiszuschlag
- Gefahrgutzuschlag
- Expressversand

SZABO-SCANDIC HandelsgmbH

Quellenstraße 110, A-1100 Wien

T. +43(0)1 489 3961-0

F. +43(0)1 489 3961-7

mail@szabo-scandic.com

www.szabo-scandic.com

[linkedin.com/company/szaboscandic](https://www.linkedin.com/company/szaboscandic) 

MAPK11 (Human) IP-WB Antibody Pair

Catalog # : H00005600-PW2

規格 : [1 Set]

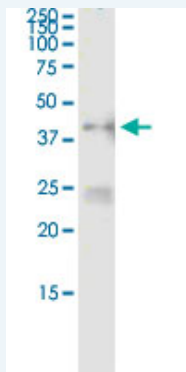
List All

Specification

Product Description: This IP-WB antibody pair set comes with one antibody for immunoprecipitation and another to detect the precipitated protein in western blot.

Reactivity: Human

Quality Control Testing: Immunoprecipitation-Western Blot (IP-WB)



Immunoprecipitation of MAPK11 transfected lysate using rabbit polyclonal anti-MAPK11 and Protein A Magnetic Bead ([U000Z](#)), and immunoblotted with mouse purified polyclonal anti-MAPK11.

Supplied Product: Antibody pair set content:
1. Antibody pair for IP: rabbit polyclonal anti-MAPK11 (300 ul)
2. Antibody pair for WB: mouse purified polyclonal anti-MAPK11 (50 ug)

Storage Instruction: Store reagents of the antibody pair set at -20°C or lower. Please aliquot to avoid repeated freeze thaw cycle. Reagents should be returned to -20°C storage immediately after use.

Applications

Immunoprecipitation-Western Blot

 [Protocol Download](#)

Gene Information

Entrez GeneID: [5600](#)

Gene Name: MAPK11

Gene Alias: P38B,P38BETA2,PRKM11,SAPK2,SAPK2B,p38-2,p38Beta

Gene Description: mitogen-activated protein kinase 11

Omim ID: [602898](#)

Gene Ontology: [Hyperlink](#)

Gene Summary: The protein encoded by this gene is a member of the MAP kinase

family. MAP kinases act as an integration point for multiple biochemical signals, and are involved in a wide variety of cellular processes such as proliferation, differentiation, transcription regulation, and development. This kinase is most closely related to p38 MAP kinase, both of which can be activated by proinflammatory cytokines and environmental stress. This kinase is activated through its phosphorylation by MAP kinase kinases (MKKs), preferably by MKK6. Transcription factor ATF2/CREB2 has been shown to be a substrate of this kinase. [provided by RefSeq]

Other OTTHUMP00000196655,mitogen-activated protein kinase p38
Designations: beta,mitogen-activated protein kinase p38-2,stress-activated protein kinase-2,stress-activated protein kinase-2b

Gene Pathway

[Amyotrophic lateral sclerosis \(ALS\)](#) [Epithelial cell signaling in Helicobacter pylori infection](#)
[Fc epsilon RI signaling pathway](#) [GnRH signaling pathway](#)
[Leukocyte transendothelial migration](#) [MAPK signaling pathway](#)
[Neurotrophin signaling pathway](#) [T cell receptor signaling pathway](#)
[Toll-like receptor signaling pathway](#) [VEGF signaling pathway](#)

Related Disease

[Cardiovascular Diseases](#) [Diabetes Mellitus, Type 2](#) [Edema](#) [HIV Infections](#)

[服務條款](#) | [隱私權政策](#) | [著作及商標](#) | [網站地圖](#)

©2016 亞諾法生技股份有限公司 Abnova Corporation. 版權所有.