



SZABO SCANDIC

Part of Europa Biosite

Produktinformation



Forschungsprodukte & Biochemikalien



Zellkultur & Verbrauchsmaterial



Diagnostik & molekulare Diagnostik



Laborgeräte & Service

Weitere Information auf den folgenden Seiten!
See the following pages for more information!



Lieferung & Zahlungsart

siehe unsere [Liefer- und Versandbedingungen](#)

Zuschläge

- Mindermengenzuschlag
- Trockeneiszuschlag
- Gefahrgutzuschlag
- Expressversand

SZABO-SCANDIC HandelsgmbH

Quellenstraße 110, A-1100 Wien

T. +43(0)1 489 3961-0

F. +43(0)1 489 3961-7

mail@szabo-scandic.com

www.szabo-scandic.com

[linkedin.com/company/szaboscandic](https://www.linkedin.com/company/szaboscandic) 

PROP1 (Human) IP-WB Antibody Pair

Catalog # : H00005626-PW2

規格 : [1 Set]

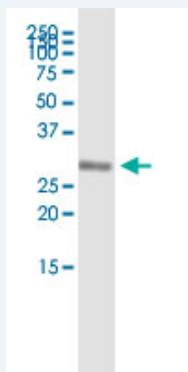
[List All](#)

Specification

Product Description: This IP-WB antibody pair set comes with one antibody for immunoprecipitation and another to detect the precipitated protein in western blot.

Reactivity: Human

Quality Control Testing: Immunoprecipitation-Western Blot (IP-WB)



Immunoprecipitation of PROP1 transfected lysate using rabbit polyclonal anti-PROP1 and Protein A Magnetic Bead (U0007), and immunoblotted with mouse purified polyclonal anti-PROP1.

Supplied Product: Antibody pair set content:
1. Antibody pair for IP: rabbit polyclonal anti-PROP1 (300 ul)
2. Antibody pair for WB: mouse purified polyclonal anti-PROP1 (50 ug)

Storage Instruction: Store reagents of the antibody pair set at -20°C or lower. Please aliquot to avoid repeated freeze thaw cycle. Reagents should be returned to -20°C storage immediately after use.

Applications

Immunoprecipitation-Western Blot

 [Protocol Download](#)

Gene Information

Entrez GeneID: [5626](#)

Gene Name: PROP1

Gene Alias: -

Gene Description: PROP paired-like homeobox 1

Omim ID: [601538](#)

Gene Ontology: [Hyperlink](#)

Gene Summary: PROP1 has both DNA-binding and transcriptional activation ability. Its

expression leads to ontogenesis of pituitary gonadotropes, as well as somatotropes, lactotropes, and caudomedial thyrotropes. Inactivating mutations in PROP1 result in deficiencies of luteinizing hormone (LH; MIM 152780), follicle-stimulating hormone (FSH; MIM 136530), growth hormone (GH; MIM 139250), prolactin (PRL; MIM 176760), and thyroid-stimulating hormone (TSH; MIM 188540). See combined pituitary hormone deficiency (CPHD; MIM 262600).[supplied by OMIM

Other OTTHUMP00000161487,prophet of Pit1, paired-like homeodomain
Designations: transcription factor

Related Disease

[Cardiovascular Diseases](#) [Diabetes Mellitus, Type 2](#) [Edema](#) [Hypopituitarism](#)

[服務條款](#) | [隱私權政策](#) | [著作及商標](#) | [網站地圖](#)

©2016 亞諾法生技股份有限公司 Abnova Corporation. 版權所有.