



SZABO SCANDIC

Part of Europa Biosite

Produktinformation



Forschungsprodukte & Biochemikalien



Zellkultur & Verbrauchsmaterial



Diagnostik & molekulare Diagnostik



Laborgeräte & Service

Weitere Information auf den folgenden Seiten!
See the following pages for more information!



Lieferung & Zahlungsart

siehe unsere [Liefer- und Versandbedingungen](#)

Zuschläge

- Mindermengenzuschlag
- Trockeneiszuschlag
- Gefahrgutzuschlag
- Expressversand

SZABO-SCANDIC HandelsgmbH

Quellenstraße 110, A-1100 Wien

T. +43(0)1 489 3961-0

F. +43(0)1 489 3961-7

mail@szabo-scandic.com

www.szabo-scandic.com

[linkedin.com/company/szaboscandic](https://www.linkedin.com/company/szaboscandic) 

PRSS1 (Human) IP-WB Antibody Pair

Catalog # : H00005644-PW2

規格 : [1 Set]

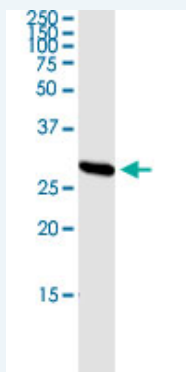
[List All](#)

Specification

Product Description: This IP-WB antibody pair set comes with one antibody for immunoprecipitation and another to detect the precipitated protein in western blot.

Reactivity: Human

Quality Control Testing: Immunoprecipitation-Western Blot (IP-WB)



Immunoprecipitation of PRSS1 transfected lysate using rabbit polyclonal anti-PRSS1 and Protein A Magnetic Bead ([U0007](#)), and immunoblotted with mouse purified polyclonal anti-PRSS1.

Supplied Product: Antibody pair set content:
 1. Antibody pair for IP: rabbit polyclonal anti-PRSS1 (300 ul)
 2. Antibody pair for WB: mouse purified polyclonal anti-PRSS1 (50 ug)

Storage Instruction: Store reagents of the antibody pair set at -20°C or lower. Please aliquot to avoid repeated freeze thaw cycle. Reagents should be returned to -20°C storage immediately after use.

Applications

Immunoprecipitation-Western Blot

 [Protocol Download](#)

Gene Information

Entrez GeneID: [5644](#)

Gene Name: PRSS1

Gene Alias: MGC120175, MGC149362, TRP1, TRY1, TRY4, TRYP1

Gene Description: protease, serine, 1 (trypsin 1)

Omim ID: [167800](#), [276000](#)

Gene Ontology: [Hyperlink](#)

Gene Summary: This gene encodes a trypsinogen, which is a member of the trypsin

family of serine proteases. This enzyme is secreted by the pancreas and cleaved to its active form in the small intestine. It is active on peptide linkages involving the carboxyl group of lysine or arginine. Mutations in this gene are associated with hereditary pancreatitis. This gene and several other trypsinogen genes are localized to the T cell receptor beta locus on chromosome 7. [provided by RefSeq]

Other cationic trypsinogen,digestive zymogen,nonfunctional trypsin
Designations: 1,protease, serine, 1,serine protease 1,trypsin I,trypsinogen 1,trypsinogen A

Gene Pathway

[Neuroactive ligand-receptor interaction](#)

Related Disease

[Acute Disease](#) [Adenocarcinoma](#) [Calcinosis](#) [Chronic Disease](#) [Cystic Fibrosis](#) [Cystic fibrosis](#) [Diabetes Mellitus](#) [Exocrine Pancreatic Insufficiency](#) [Genetic Predisposition to Disease](#) [Hyperlipidemias](#) [Hyperparathyroidism, Primary Infant, Newborn, Diseases](#) [Pancreatic cancer](#) [Pancreatic Diseases](#) [Pancreatic Neoplasms](#) [Pancreatitis](#) [Pancreatitis, Alcoholic](#) [Pancreatitis, Chronic](#) [Recurrence](#)

... see more

[服務條款](#) | [隱私權政策](#) | [著作及商標](#) | [網站地圖](#)

©2016 亞諾法生技股份有限公司 Abnova Corporation. 版權所有.