



SZABO SCANDIC

Part of Europa Biosite

Produktinformation



Forschungsprodukte & Biochemikalien



Zellkultur & Verbrauchsmaterial



Diagnostik & molekulare Diagnostik



Laborgeräte & Service

Weitere Information auf den folgenden Seiten!
See the following pages for more information!



Lieferung & Zahlungsart

siehe unsere [Liefer- und Versandbedingungen](#)

Zuschläge

- Mindermengenzuschlag
- Trockeneiszuschlag
- Gefahrgutzuschlag
- Expressversand

SZABO-SCANDIC HandelsgmbH

Quellenstraße 110, A-1100 Wien

T. +43(0)1 489 3961-0

F. +43(0)1 489 3961-7

mail@szabo-scandic.com

www.szabo-scandic.com

[linkedin.com/company/szaboscandic](https://www.linkedin.com/company/szaboscandic) 

PSMD7 (Human) IP-WB Antibody Pair

Catalog # : H00005713-PW1

規格 : [1 Set]

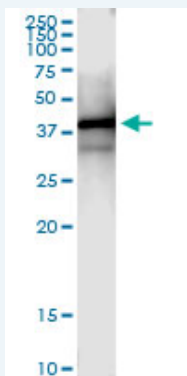
[List All](#)

Specification

Product Description: This IP-WB antibody pair set comes with one antibody for immunoprecipitation and another to detect the precipitated protein in western blot.

Reactivity: Human

Quality Control Testing: Immunoprecipitation-Western Blot (IP-WB)



Immunoprecipitation of PSMD7 transfected lysate using rabbit polyclonal anti-PSMD7 and Protein A Magnetic Bead ([U0007](#)), and immunoblotted with mouse polyclonal anti-PSMD7.

Supplied Product: Antibody pair set content:
 1. Antibody pair for IP: rabbit polyclonal anti-PSMD7 (300 ul)
 2. Antibody pair for WB: mouse polyclonal anti-PSMD7 (50 ul)

Storage Instruction: Store reagents of the antibody pair set at -20°C or lower. Please aliquot to avoid repeated freeze thaw cycle. Reagents should be returned to -20°C storage immediately after use.

MSDS:  [Download](#)

Applications

Immunoprecipitation-Western Blot

 [Protocol Download](#)

Gene Information

Entrez GeneID: [5713](#)

Gene Name: PSMD7

Gene Alias: MOV34,P40,Rpn8,S12

Gene Description: proteasome (prosome, macropain) 26S subunit, non-ATPase, 7

Omim ID: [157970](#)

Gene Ontology: [Hyperlink](#)

Application Image

Immunoprecipitation-Western Blot

Gene Summary: The 26S proteasome is a multicatalytic proteinase complex with a highly ordered structure composed of 2 complexes, a 20S core and a 19S regulator. The 20S core is composed of 4 rings of 28 non-identical subunits; 2 rings are composed of 7 alpha subunits and 2 rings are composed of 7 beta subunits. The 19S regulator is composed of a base, which contains 6 ATPase subunits and 2 non-ATPase subunits, and a lid, which contains up to 10 non-ATPase subunits. Proteasomes are distributed throughout eukaryotic cells at a high concentration and cleave peptides in an ATP/ubiquitin-dependent process in a non-lysosomal pathway. An essential function of a modified proteasome, the immunoproteasome, is the processing of class I MHC peptides. This gene encodes a non-ATPase subunit of the 19S regulator. A pseudogene has been identified on chromosome 17. [provided by RefSeq]

Other Designations: 26S proteasome non-ATPase regulatory subunit 7, 26S proteasome regulatory subunit S12, Moloney leukemia virus-34 proviral integration, Mov34 homolog, proteasome (prosome, macropain) 26S subunit, non-ATPase, 7 (Mov34 homolog), proteasome 26S non-ATPase subunit

Gene Pathway

[Proteasome](#)

Related Disease

[Genetic Predisposition to Disease](#)