



SZABO SCANDIC

Part of Europa Biosite

Produktinformation



Forschungsprodukte & Biochemikalien



Zellkultur & Verbrauchsmaterial



Diagnostik & molekulare Diagnostik



Laborgeräte & Service

Weitere Information auf den folgenden Seiten!
See the following pages for more information!



Lieferung & Zahlungsart

siehe unsere [Liefer- und Versandbedingungen](#)

Zuschläge

- Mindermengenzuschlag
- Trockeneiszuschlag
- Gefahrgutzuschlag
- Expressversand

SZABO-SCANDIC HandelsgmbH

Quellenstraße 110, A-1100 Wien

T. +43(0)1 489 3961-0

F. +43(0)1 489 3961-7

mail@szabo-scandic.com

www.szabo-scandic.com

[linkedin.com/company/szaboscandic](https://www.linkedin.com/company/szaboscandic) 

PVRL1 (Human) IP-WB Antibody Pair

Catalog # : H00005818-PW2

規格 : [1 Set]

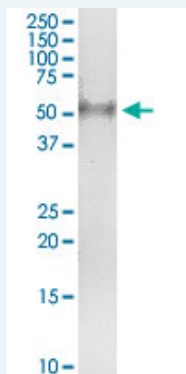
List All

Specification

Product Description: This IP-WB antibody pair set comes with one antibody for immunoprecipitation and another to detect the precipitated protein in western blot.

Reactivity: Human

Quality Control Testing: Immunoprecipitation-Western Blot (IP-WB)



Immunoprecipitation of PVRL1 transfected lysate using rabbit purified polyclonal anti-PVRL1 and Protein A Magnetic Bead (U000Z), and immunoblotted with mouse purified polyclonal anti-PVRL1.

Supplied Product: Antibody pair set content:
1. Antibody pair for IP: rabbit purified polyclonal anti-PVRL1 (300 ug)
2. Antibody pair for WB: mouse purified polyclonal anti-PVRL1 (50 ug)

Storage Instruction: Store reagents of the antibody pair set at -20°C or lower. Please aliquot to avoid repeated freeze thaw cycle. Reagents should be returned to -20°C storage immediately after use.

Applications

Immunoprecipitation-Western Blot

 [Protocol Download](#)

Gene Information

Entrez GeneID: [5818](#)

Gene Name: PVRL1

Gene Alias: CD111,CLPED1,ED4,HlgR,HVEC,MGC142031,MGC16207,OFC7,PRR,PRR1,PVRR,PVRR1,SK-12,nectin-1

Gene Description: poliovirus receptor-related 1 (herpesvirus entry mediator C)

Omim ID: [225000](#), [225060](#), [600644](#)

Gene Ontology: [Hyperlink](#)

Other ectodermal dysplasia 4 (Margarita Island type),herpesvirus entry
Designations: mediator C,nectin 1,poliovirus receptor related,poliovirus receptor-like
1,poliovirus receptor-related 1,poliovirus receptor-related 1
(herpesvirus entry mediator C; nectin)

Gene Pathway

[Adherens junction](#) [Cell adhesion molecules \(CAMs\)](#)

Related Disease

[Cleft Lip](#) [Cleft Palate](#) [Disease Models, Animal](#) [Genetic Predisposition to Disease](#)
[Tobacco Use Disorder](#) [Tooth Abnormalities](#)

[服務條款](#) | [隱私權政策](#) | [著作及商標](#) | [網站地圖](#)

©2016 亞諾法生技股份有限公司 Abnova Corporation. 版權所有.