



SZABO SCANDIC

Part of Europa Biosite

Produktinformation



Forschungsprodukte & Biochemikalien



Zellkultur & Verbrauchsmaterial



Diagnostik & molekulare Diagnostik



Laborgeräte & Service

Weitere Information auf den folgenden Seiten!
See the following pages for more information!



Lieferung & Zahlungsart

siehe unsere [Liefer- und Versandbedingungen](#)

Zuschläge

- Mindermengenzuschlag
- Trockeneiszuschlag
- Gefahrgutzuschlag
- Expressversand

SZABO-SCANDIC HandelsgmbH

Quellenstraße 110, A-1100 Wien

T. +43(0)1 489 3961-0

F. +43(0)1 489 3961-7

mail@szabo-scandic.com

www.szabo-scandic.com

[linkedin.com/company/szaboscandic](https://www.linkedin.com/company/szaboscandic) 

PVRL2 (Human) IP-WB Antibody Pair

Catalog # : H00005819-PW1

規格 : [1 Set]

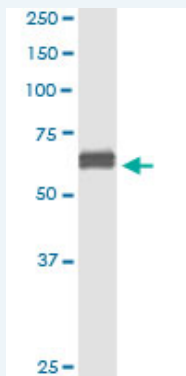
[List All](#)

Specification

Product Description: This IP-WB antibody pair set comes with one antibody for immunoprecipitation and another to detect the precipitated protein in western blot.

Reactivity: Human

Quality Control Testing: Immunoprecipitation-Western Blot (IP-WB)



Immunoprecipitation of PVRL2 transfected lysate using mouse monoclonal anti-PVRL2 and Protein A Magnetic Bead ([U0007](#)), and immunoblotted with rabbit polyclonal anti-PVRL2.

Supplied Product: Antibody pair set content:
1. Antibody pair for IP: mouse monoclonal anti-PVRL2 (300 ug)
2. Antibody pair for WB: rabbit polyclonal anti-PVRL2 (50 ul)

Storage Instruction: Store reagents of the antibody pair set at -20°C or lower. Please aliquot to avoid repeated freeze thaw cycle. Reagents should be returned to -20°C storage immediately after use.

MSDS:  [Download](#)

Applications

Immunoprecipitation-Western Blot

 [Protocol Download](#)

Gene Information

Entrez GeneID: [5819](#)

Gene Name: PVRL2

Gene Alias: CD112,HVEB,PRR2,PVRR2

Gene Description: poliovirus receptor-related 2 (herpesvirus entry mediator B)

Omim ID: [600798](#)

Gene Ontology: [Hyperlink](#)

Application Image

Immunoprecipitation-Western Blot

Gene Summary: This gene encodes a single-pass type I membrane glycoprotein with two Ig-like C2-type domains and an Ig-like V-type domain. This protein is one of the plasma membrane components of adherens junctions. It also serves as an entry for certain mutant strains of herpes simplex virus and pseudorabies virus, and it is involved in cell to cell spreading of these viruses. Variations in this gene have been associated with differences in the severity of multiple sclerosis. Alternate transcriptional splice variants, encoding different isoforms, have been characterized. [provided by RefSeq]

Other Designations: herpesvirus entry mediator B, herpesvirus entry protein B, nectin 2, poliovirus receptor related 2, poliovirus receptor-like 2

Gene Pathway

[Adherens junction](#) [Cell adhesion molecules \(CAMs\)](#)

Related Disease

[Alzheimer Disease](#) [Alzheimer disease](#) [Cardiovascular Diseases](#) [Cleft Lip](#) [Cleft Palate](#)
[Coronary Disease](#) [Diabetes Mellitus, Type 2](#) [Disease Progression](#) [Edema](#)
[Genetic Predisposition to Disease](#) [Multiple Sclerosis](#)

[服務條款](#) | [隱私權政策](#) | [著作及商標](#) | [網站地圖](#)

©2016 亞諾法生技股份有限公司 Abnova Corporation. 版權所有.