



# SZABO SCANDIC

Part of Europa Biosite

## Produktinformation



Forschungsprodukte & Biochemikalien



Zellkultur & Verbrauchsmaterial



Diagnostik & molekulare Diagnostik



Laborgeräte & Service

Weitere Information auf den folgenden Seiten!  
See the following pages for more information!



### Lieferung & Zahlungsart

siehe unsere [Liefer- und Versandbedingungen](#)

### Zuschläge

- Mindermengenzuschlag
- Trockeneiszuschlag
- Gefahrgutzuschlag
- Expressversand

### SZABO-SCANDIC HandelsgmbH

Quellenstraße 110, A-1100 Wien

T. +43(0)1 489 3961-0

F. +43(0)1 489 3961-7

[mail@szabo-scandic.com](mailto:mail@szabo-scandic.com)

[www.szabo-scandic.com](http://www.szabo-scandic.com)

[linkedin.com/company/szaboscandic](https://www.linkedin.com/company/szaboscandic) 

## RAD51 (Human) IP-WB Antibody Pair

Catalog # : H00005888-PW1

規格 : [ 1 Set ]

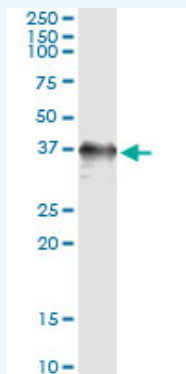
[List All](#)

### Specification

**Product Description:** This IP-WB antibody pair set comes with one antibody for immunoprecipitation and another to detect the precipitated protein in western blot.

**Reactivity:** Human

**Quality Control Testing:** Immunoprecipitation-Western Blot (IP-WB)



Immunoprecipitation of RAD51 transfected lysate using mouse monoclonal anti-RAD51 and Protein A Magnetic Bead ([U000Z](#)), and immunoblotted with rabbit polyclonal anti-RAD51.

**Supplied Product:** Antibody pair set content:  
1. Antibody pair for IP: mouse monoclonal anti-RAD51 (300 ug)  
2. Antibody pair for WB: rabbit polyclonal anti-RAD51 (50 ul)

**Storage Instruction:** Store reagents of the antibody pair set at -20°C or lower. Please aliquot to avoid repeated freeze thaw cycle. Reagents should be returned to -20°C storage immediately after use.

**MSDS:**  [Download](#)

### Applications

Immunoprecipitation-Western Blot

 [Protocol Download](#)

### Gene Information

**Entrez GeneID:** [5888](#)

**Gene Name:** RAD51

**Gene Alias:** BRCC5,HRAD51,HsRad51,HsT16930,RAD51A,RECA

**Gene Description:** RAD51 homolog (RecA homolog, E. coli) (S. cerevisiae)

**Omim ID:** [114480](#), [179617](#)

**Gene Ontology:** [Hyperlink](#)

### Application Image

Immunoprecipitation-Western Blot

**Gene Summary:** The protein encoded by this gene is a member of the RAD51 protein family. RAD51 family members are highly similar to bacterial RecA and *Saccharomyces cerevisiae* Rad51, and are known to be involved in the homologous recombination and repair of DNA. This protein can interact with the ssDNA-binding protein RPA and RAD52, and it is thought to play roles in homologous pairing and strand transfer of DNA. This protein is also found to interact with BRCA1 and BRCA2, which may be important for the cellular response to DNA damage. BRCA2 is shown to regulate both the intracellular localization and DNA-binding ability of this protein. Loss of these controls following BRCA2 inactivation may be a key event leading to genomic instability and tumorigenesis. Multiple transcript variants encoding different isoforms have been found for this gene. [provided by RefSeq]

**Other Designations:** BRCA1/BRCA2-containing complex, subunit 5, DNA repair protein RAD51 homolog 1, RAD51 homolog protein, RAD51, *S. cerevisiae*, homolog of, A, RecA, *E. coli*, homolog of, RecA-like protein, recombination protein A

### Gene Pathway

[Homologous recombination](#) [Pancreatic cancer](#) [Pathways in cancer](#)

### Related Disease

[Acute Disease](#) [Adenocarcinoma](#) [Ataxia telangiectasia](#) [Brain Neoplasms](#) [Breast cancer](#) [Breast Neoplasms](#) [Carcinoma](#) [Carcinoma, Ductal](#) [Carcinoma, Ductal, Breast](#) [Carcinoma, Intraductal, Noninfiltrating](#) [Carcinoma, Lobular](#) [Carcinoma, Non-Small-Cell Lung](#) [Carcinoma, Papillary](#) [Carcinoma, Squamous Cell](#) [Carcinoma, Transitional Cell](#) [Chromosome Aberrations](#) [Colorectal Neoplasms](#) [DNA Damage](#) [DNA Repair-Deficiency Disorders](#)

[... see more](#)

[服務條款](#) | [隱私權政策](#) | [著作及商標](#) | [網站地圖](#)

©2016 亞諾法生技股份有限公司 Abnova Corporation. 版權所有.