



SZABO SCANDIC

Part of Europa Biosite

Produktinformation



Forschungsprodukte & Biochemikalien



Zellkultur & Verbrauchsmaterial



Diagnostik & molekulare Diagnostik



Laborgeräte & Service

Weitere Information auf den folgenden Seiten!
See the following pages for more information!



Lieferung & Zahlungsart

siehe unsere [Liefer- und Versandbedingungen](#)

Zuschläge

- Mindermengenzuschlag
- Trockeneiszuschlag
- Gefahrgutzuschlag
- Expressversand

SZABO-SCANDIC HandelsgmbH

Quellenstraße 110, A-1100 Wien

T. +43(0)1 489 3961-0

F. +43(0)1 489 3961-7

mail@szabo-scandic.com

www.szabo-scandic.com

[linkedin.com/company/szaboscandic](https://www.linkedin.com/company/szaboscandic) 

RAD51L3 (Human) Matched Antibody Pair

Catalog # : H00005892-AP21

規格 : [1 Set]

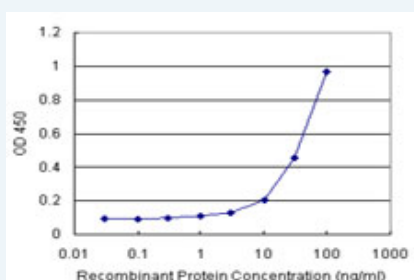
[List All](#)

Specification

Product Description: This antibody pair set comes with matched antibody pair to detect and quantify protein level of human RAD51L3.

Reactivity: Human

Quality Control Testing: Standard curve using recombinant protein (H00005892-P01) as an analyte.



Sandwich ELISA detection sensitivity ranging from 3 ng/ml to 100 ng/ml.

Supplied Product: Antibody pair set content:
 1. Capture antibody: rabbit MaxPab® affinity purified polyclonal anti-RAD51L3 (100 ug)
 2. Detection antibody: mouse purified polyclonal anti-RAD51L3 (20 ug)
 *Reagents are sufficient for at least 1-2 x 96 well plates using recommended protocols.

Storage Instruction: Store reagents of the antibody pair set at -20°C or lower. Please aliquot to avoid repeated freeze thaw cycle. Reagents should be returned to -20°C storage immediately after use.

MSDS:  [Download](#)

Applications

ELISA Pair (Recombinant protein)

 [Protocol Download](#)

Gene Information

Entrez GeneID: [5892](#)

Gene Name: RAD51L3

Gene Alias: HsTRAD,R51H3,RAD51D,Trad

Gene Description: RAD51-like 3 (S. cerevisiae)

Omim ID: [602954](#)

Gene Ontology: [Hyperlink](#)

Gene Summary: The protein encoded by this gene is a member of the RAD51 protein family. RAD51 family members are highly similar to bacterial RecA and *Saccharomyces cerevisiae* Rad51, which are known to be involved in the homologous recombination and repair of DNA. This protein forms a complex with several other members of the RAD51 family, including RAD51L1, RAD51L2, and XRCC2. The protein complex formed with this protein has been shown to catalyze homologous pairing between single- and double-stranded DNA, and is thought to play a role in the early stage of recombinational repair of DNA. Several alternatively spliced transcript variants of this gene have been described, but the biological validity of some of them has not been determined. [provided by RefSeq]

Other Designations: DNA repair protein RAD51 homolog 4, RAD51-like 3, recombination repair protein

Gene Pathway

[Homologous recombination](#)

Related Disease

[Adenocarcinoma](#) [Breast cancer](#) [Breast Neoplasms](#) [Genetic Predisposition to Disease](#) [Head and Neck Neoplasms](#) [Multiple Sclerosis](#) [Neoplasm Recurrence, Local](#) [Neoplasms, Second Primary](#) [Ovarian cancer](#) [Ovarian Neoplasms](#) [Pancreatic Neoplasms](#) [Urinary Bladder Neoplasms](#)

[服務條款](#) | [隱私權政策](#) | [著作及商標](#) | [網站地圖](#)

©2016 亞諾法生技股份有限公司 Abnova Corporation. 版權所有。