



# SZABO SCANDIC

Part of Europa Biosite

## Produktinformation



Forschungsprodukte & Biochemikalien



Zellkultur & Verbrauchsmaterial



Diagnostik & molekulare Diagnostik



Laborgeräte & Service

Weitere Information auf den folgenden Seiten!  
See the following pages for more information!



### Lieferung & Zahlungsart

siehe unsere [Liefer- und Versandbedingungen](#)

### Zuschläge

- Mindermengenzuschlag
- Trockeneiszuschlag
- Gefahrgutzuschlag
- Expressversand

### SZABO-SCANDIC HandelsgmbH

Quellenstraße 110, A-1100 Wien

T. +43(0)1 489 3961-0

F. +43(0)1 489 3961-7

[mail@szabo-scandic.com](mailto:mail@szabo-scandic.com)

[www.szabo-scandic.com](http://www.szabo-scandic.com)

[linkedin.com/company/szaboscandic](https://www.linkedin.com/company/szaboscandic) 

## RASA1 (Human) IP-WB Antibody Pair

Catalog # : H00005921-PW2

規格 : [ 1 Set ]

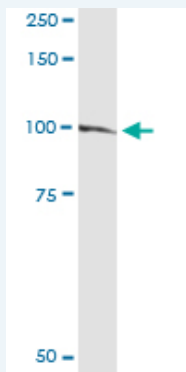
[List All](#)

### Specification

**Product Description:** This IP-WB antibody pair set comes with one antibody for immunoprecipitation and another to detect the precipitated protein in western blot.

**Reactivity:** Human

**Quality Control Testing:** Immunoprecipitation-Western Blot (IP-WB)



Immunoprecipitation of RASA1 transfected lysate using rabbit polyclonal anti-RASA1 and Protein A Magnetic Bead ([U0007](#)), and immunoblotted with mouse purified polyclonal anti-RASA1.

**Supplied Product:** Antibody pair set content:  
 1. Antibody pair for IP: rabbit polyclonal anti-RASA1 (300 ul)  
 2. Antibody pair for WB: mouse purified polyclonal anti-RASA1 (50 ug)

**Storage Instruction:** Store reagents of the antibody pair set at -20°C or lower. Please aliquot to avoid repeated freeze thaw cycle. Reagents should be returned to -20°C storage immediately after use.

**MSDS:**  [Download](#)

### Applications

**Immunoprecipitation-Western Blot**

 [Protocol Download](#)

### Gene Information

**Entrez GeneID:** [5921](#)

**Gene Name:** RASA1

**Gene Alias:** CM-AVM, CMAVM, DKFZp434N071, GAP, PKWS, RASA, RASGAP, p120GAP, p120RASGAP

**Gene Description:** RAS p21 protein activator (GTPase activating protein) 1

**Omim ID:** [139150](#), [608354](#), [608355](#)

### Application Image

Immunoprecipitation-Western Blot

**Gene Ontology:** [Hyperlink](#)

**Gene Summary:** The protein encoded by this gene is located in the cytoplasm and is part of the GAP1 family of GTPase-activating proteins. The gene product stimulates the GTPase activity of normal RAS p21 but not its oncogenic counterpart. Acting as a suppressor of RAS function, the protein enhances the weak intrinsic GTPase activity of RAS proteins resulting in the inactive GDP-bound form of RAS, thereby allowing control of cellular proliferation and differentiation. Mutations leading to changes in the binding sites of either protein are associated with basal cell carcinomas. Alternative splicing results in two isoforms where the shorter isoform, lacking the N-terminal hydrophobic region but retaining the same activity, appears to be abundantly expressed in placental but not adult tissues. [provided by RefSeq]

**Other Designations:** GTPase activating protein, RAS p21 protein activator 1, triphosphatase-activating protein

### Gene Pathway

[Axon guidance](#) [MAPK signaling pathway](#)

### Related Disease

[Adenoma](#), [Oxyphilic Carcinoma](#), [Medullary Carcinoma](#), [Non-Small-Cell Lung Carcinoma](#), [Papillary Chromosome Aberrations](#), [Hypertension](#), [Leukemia](#), [Myeloid](#), [Acute Lung Neoplasms](#), [Nasopharyngeal Neoplasms](#), [Pre-Eclampsia](#), [Pregnancy Complications](#), [Recurrence](#), [Thyroid Neoplasms](#)

[服務條款](#) | [隱私權政策](#) | [著作及商標](#) | [網站地圖](#)

©2016 亞諾法生技股份有限公司 Abnova Corporation. 版權所有.