



# SZABO SCANDIC

Part of Europa Biosite

## Produktinformation



Forschungsprodukte & Biochemikalien



Zellkultur & Verbrauchsmaterial



Diagnostik & molekulare Diagnostik



Laborgeräte & Service

Weitere Information auf den folgenden Seiten!  
See the following pages for more information!



### Lieferung & Zahlungsart

siehe unsere [Liefer- und Versandbedingungen](#)

### Zuschläge

- Mindermengenzuschlag
- Trockeneiszuschlag
- Gefahrgutzuschlag
- Expressversand

### SZABO-SCANDIC HandelsgmbH

Quellenstraße 110, A-1100 Wien

T. +43(0)1 489 3961-0

F. +43(0)1 489 3961-7

[mail@szabo-scandic.com](mailto:mail@szabo-scandic.com)

[www.szabo-scandic.com](http://www.szabo-scandic.com)

[linkedin.com/company/szaboscandic](https://www.linkedin.com/company/szaboscandic) 

## RELB (Human) IP-WB Antibody Pair

Catalog # : H00005971-PW2

規格 : [ 1 Set ]

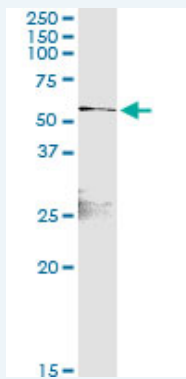
List All

### Specification

**Product Description:** This IP-WB antibody pair set comes with one antibody for immunoprecipitation and another to detect the precipitated protein in western blot.

**Reactivity:** Human

**Quality Control Testing:** Immunoprecipitation-Western Blot (IP-WB)



Immunoprecipitation of RELB transfected lysate using rabbit polyclonal anti-RELB and Protein A Magnetic Bead ([U0007](#)), and immunoblotted with mouse purified polyclonal anti-RELB.

**Supplied Product:** Antibody pair set content:  
 1. Antibody pair for IP: rabbit polyclonal anti-RELB (300 ul)  
 2. Antibody pair for WB: mouse purified polyclonal anti-RELB (50 ug)

**Storage Instruction:** Store reagents of the antibody pair set at -20°C or lower. Please aliquot to avoid repeated freeze thaw cycle. Reagents should be returned to -20°C storage immediately after use.

### Applications

Immunoprecipitation-Western Blot

 [Protocol Download](#)

### Gene Information

**Entrez GeneID:** [5971](#)

**Gene Name:** RELB

**Gene Alias:** I-REL, IREL

**Gene Description:** v-rel reticuloendotheliosis viral oncogene homolog B

**Omim ID:** [604758](#)

**Gene Ontology:** [Hyperlink](#)

**Other:** reticuloendotheliosis viral oncogene homolog B,v-rel avian

### Application Image

Immunoprecipitation-Western Blot

**Designations:** reticuloendotheliosis viral oncogene homolog B (nuclear factor of kappa light polypeptide gene enhancer in B-cells 3),v-rel reticuloendotheliosis viral oncogene homolog B, nuclear factor of kappa

---

### Gene Pathway

---

[MAPK signaling pathway](#)

### Related Disease

---

[Arthritis, Rheumatoid](#) [Cardiovascular Diseases](#) [Diabetes Mellitus, Type 2](#)  
[Disease Susceptibility](#) [Edema](#) [Genetic Predisposition to Disease](#) [Hematologic Diseases](#)  
[Hodgkin Disease](#) [Lymphoproliferative Disorders](#) [Multiple Myeloma](#) [Occupational Diseases](#)  
[Waldenstrom Macroglobulinemia](#) [Werner syndrome](#)

---

[服務條款](#) | [隱私權政策](#) | [著作及商標](#) | [網站地圖](#)

©2016 亞諾法生技股份有限公司 Abnova Corporation. 版權所有.