



SZABO SCANDIC

Part of Europa Biosite

Produktinformation



Forschungsprodukte & Biochemikalien



Zellkultur & Verbrauchsmaterial



Diagnostik & molekulare Diagnostik



Laborgeräte & Service

Weitere Information auf den folgenden Seiten!
See the following pages for more information!



Lieferung & Zahlungsart

siehe unsere [Liefer- und Versandbedingungen](#)

Zuschläge

- Mindermengenzuschlag
- Trockeneiszuschlag
- Gefahrgutzuschlag
- Expressversand

SZABO-SCANDIC HandelsgmbH

Quellenstraße 110, A-1100 Wien

T. +43(0)1 489 3961-0

F. +43(0)1 489 3961-7

mail@szabo-scandic.com

www.szabo-scandic.com

[linkedin.com/company/szaboscandic](https://www.linkedin.com/company/szaboscandic) 

RPS6KB2 (Human) Matched Antibody Pair

Catalog # : H00006199-AP51

規格 : [1 Set]

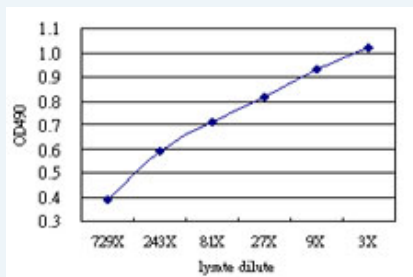
[List All](#)

Specification

Product Description: This antibody pair set comes with matched antibody pair to detect and quantify protein level of human RPS6KB2.

Reactivity: Human

Quality Control Testing: Standard curve using RPS6KB2 293T overexpression lysate (non-denatured) as an analyte.



Sandwich ELISA detection sensitivity ranging from approximately 243x to 3x dilution of the RPS6KB2 293T overexpression lysate (non-denatured).

Supplied Product: Antibody pair set content:
 1. Capture antibody: mouse monoclonal anti-RPS6KB2 (100 ug)
 2. Detection antibody: rabbit purified polyclonal anti-RPS6KB2 (50 ug)
 *Reagents are sufficient for at least 3-5 x 96 well plates using recommended protocols.

Storage Instruction: Store reagents of the antibody pair set at -20°C or lower. Please aliquot to avoid repeated freeze thaw cycle. Reagents should be returned to -20°C storage immediately after use.

MSDS:  [Download](#)

Applications

ELISA Pair (Transfected lysate)

 [Protocol Download](#)

Gene Information

Entrez GeneID: [6199](#)

Gene Name: RPS6KB2

Gene Alias: KLS,P70-beta,P70-beta-1,P70-beta-2,S6K-beta2,S6K2,SRK,STK14B,p70(S6K)-beta,p70S6Kb

Gene Description: ribosomal protein S6 kinase, 70kDa, polypeptide 2

Omim ID: [608939](#)

Gene Ontology: [Hyperlink](#)

Application Image

ELISA Pair (Transfected lysate)

Gene Summary: This gene encodes a member of the RSK (ribosomal S6 kinase) family of serine/threonine kinases. This kinase contains 2 nonidentical kinase catalytic domains and phosphorylates the S6 ribosomal protein and eucaryotic translation initiation factor 4B (eIF4B). Phosphorylation of S6 leads to an increase in protein synthesis and cell proliferation. [provided by RefSeq]

Other Designations: S6 kinase-related kinase,p70 ribosomal S6 kinase beta,ribosomal protein S6 kinase, 70kD, polypeptide 2,serine/threonine-protein kinase 14 beta

Gene Pathway

[Acute myeloid leukemia](#) [ErbB signaling pathway](#) [Fc gamma R-mediated phagocytosis](#)
[Insulin signaling pathway](#) [mTOR signaling pathway](#) [TGF-beta signaling pathway](#)

Related Disease

[Head and Neck Neoplasms](#) [Neoplasm Recurrence, Local](#) [Neoplasms, Second Primary](#)

[服務條款](#) | [隱私權政策](#) | [著作及商標](#) | [網站地圖](#)

©2016 亞諾法生技股份有限公司 Abnova Corporation. 版權所有.