



SZABO SCANDIC

Part of Europa Biosite

Produktinformation



Forschungsprodukte & Biochemikalien



Zellkultur & Verbrauchsmaterial



Diagnostik & molekulare Diagnostik



Laborgeräte & Service

Weitere Information auf den folgenden Seiten!
See the following pages for more information!



Lieferung & Zahlungsart

siehe unsere [Liefer- und Versandbedingungen](#)

Zuschläge

- Mindermengenzuschlag
- Trockeneiszuschlag
- Gefahrgutzuschlag
- Expressversand

SZABO-SCANDIC HandelsgmbH

Quellenstraße 110, A-1100 Wien

T. +43(0)1 489 3961-0

F. +43(0)1 489 3961-7

mail@szabo-scandic.com

www.szabo-scandic.com

[linkedin.com/company/szaboscandic](https://www.linkedin.com/company/szaboscandic) 

CCL2 (Human) Matched Antibody Pair

Catalog # : H00006347-AP41

規格 : [1 Set]

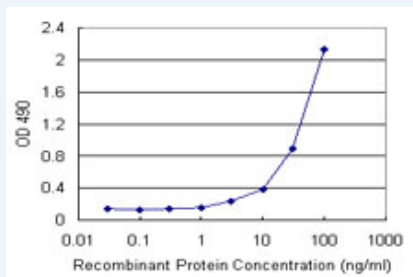
List All

Specification

Product Description: This antibody pair set comes with matched antibody pair to detect and quantify protein level of human CCL2.

Reactivity: Human

Quality Control Testing: Standard curve using recombinant protein (H00006347-P01) as an analyte.



Sandwich ELISA detection sensitivity ranging from 3 ng/ml to 100 ng/ml.

Supplied Product: Antibody pair set content:
 1. Capture antibody: mouse monoclonal anti-CCL2 (100 ug)
 2. Detection antibody: biotinylated mouse monoclonal anti-CCL2, IgG2a Kappa (50 ug)
 *Reagents are sufficient for at least 3-5 x 96 well plates using recommended protocols.

Storage Instruction: Store reagents of the antibody pair set at -20°C or lower. Please aliquot to avoid repeated freeze thaw cycle. Reagents should be returned to -20°C storage immediately after use.

MSDS:  [Download](#)

Applications

ELISA Pair (Recombinant protein)

 [Protocol Download](#)

Gene Information

Entrez GeneID: [6347](#)

Gene Name: CCL2

Gene Alias: GDCF-2, HC11, HSMCR30, MCAF, MCP-1, MCP1, MGC9434, SCYA2, SMC-CF

Gene Description: chemokine (C-C motif) ligand 2

Omim ID: [158105](#), [182940](#), [607948](#), [609423](#)

Gene Ontology: [Hyperlink](#)

Application Image

ELISA Pair (Recombinant protein)

Gene Summary: This gene is one of several cytokine genes clustered on the q-arm of chromosome 17. Cytokines are a family of secreted proteins involved in immunoregulatory and inflammatory processes. The protein encoded by this gene is structurally related to the CXC subfamily of cytokines. Members of this subfamily are characterized by two cysteines separated by a single amino acid. This cytokine displays chemotactic activity for monocytes and basophils but not for neutrophils or eosinophils. It has been implicated in the pathogenesis of diseases characterized by monocytic infiltrates, like psoriasis, rheumatoid arthritis and atherosclerosis. It binds to chemokine receptors CCR2 and CCR4. [provided by RefSeq]

Other Designations: monocyte chemoattractant protein-1, monocyte chemotactic and activating factor, monocyte chemotactic protein 1, homologous to mouse Sig-je, monocyte secretory protein JE, small inducible cytokine A2, small inducible cytokine A2 (monocyte chemotactic protein 1,

Gene Pathway

[Chemokine signaling pathway](#) [Cytokine-cytokine receptor interaction](#)

Related Disease

[Acquired Immunodeficiency Syndrome](#) [Acute Disease](#) [AIDS](#) [Dementia Complex](#)
[Alopecia Areata](#) [Alzheimer Disease](#) [Alzheimer disease](#) [Angina Pectoris](#) [Arteriosclerosis](#)
[Arthritis](#) [Arthritis, Juvenile Rheumatoid](#) [Arthritis, Rheumatoid](#) [Ascites](#) [Asthma](#) [Asthma](#)
[Atherosclerosis](#) [Atherosclerosis](#) [Bacterial Infections](#) [Behcet Syndrome](#) [Bipolar Disorder](#)

... see more

[服務條款](#) | [隱私權政策](#) | [著作及商標](#) | [網站地圖](#)

©2016 亞諾法生技股份有限公司 Abnova Corporation. 版權所有.