



SZABO SCANDIC

Part of Europa Biosite

Produktinformation



Forschungsprodukte & Biochemikalien



Zellkultur & Verbrauchsmaterial



Diagnostik & molekulare Diagnostik



Laborgeräte & Service

Weitere Information auf den folgenden Seiten!
See the following pages for more information!



Lieferung & Zahlungsart

siehe unsere [Liefer- und Versandbedingungen](#)

Zuschläge

- Mindermengenzuschlag
- Trockeneiszuschlag
- Gefahrgutzuschlag
- Expressversand

SZABO-SCANDIC HandelsgmbH

Quellenstraße 110, A-1100 Wien

T. +43(0)1 489 3961-0

F. +43(0)1 489 3961-7

mail@szabo-scandic.com

www.szabo-scandic.com

[linkedin.com/company/szaboscandic](https://www.linkedin.com/company/szaboscandic) 

CCL15 (Human) IP-WB Antibody Pair

Catalog # : H00006359-PW1

規格 : [1 Set]

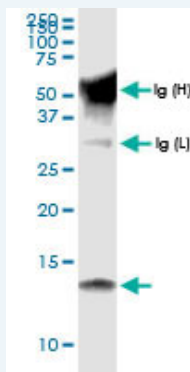
List All

Specification

Product Description: This IP-WB antibody pair set comes with one antibody for immunoprecipitation and another to detect the precipitated protein in western blot.

Reactivity: Human

Quality Control Testing: Immunoprecipitation-Western Blot (IP-WB)



Immunoprecipitation of CCL15 transfected lysate using rabbit polyclonal anti-CCL15 and Protein A Magnetic Bead ([U0007](#)), and immunoblotted with rabbit polyclonal anti-CCL15.

Supplied Product: Antibody pair set content:
1. Antibody pair for IP: rabbit polyclonal anti-CCL15 (300 ul)
2. Antibody pair for WB: rabbit polyclonal anti-CCL15 (50 ul)

Storage Instruction: Store reagents of the antibody pair set at -20°C or lower. Please aliquot to avoid repeated freeze thaw cycle. Reagents should be returned to -20°C storage immediately after use.

MSDS:  [Download](#)

Applications

Immunoprecipitation-Western Blot

 [Protocol Download](#)

Gene Information

Entrez GeneID: [6359](#)

Gene Name: CCL15

Gene Alias: HCC-2,HMRP-2B,LKN1,Lkn-1,MIP-1d,MIP-5,NCC-3,NCC3,SCYA15,SCYL3,SY15

Gene Description: chemokine (C-C motif) ligand 15

Omim ID: [601393](#)

Application Image

Immunoprecipitation-Western Blot

Gene Ontology: [Hyperlink](#)

Gene Summary: This gene, CCL15, is one of several CC cytokine genes clustered on 17q11.2. The CC cytokines are secreted proteins characterized by two adjacent cysteines. The cytokine encoded by this gene is chemotactic for T cells and monocytes and induces N-acetyl-beta-D-glucosaminidase release in monocytes. It induces changes in intracellular calcium concentration in monocytes and is thought to act through the CCR1 receptor. Read-through transcripts are expressed that include exons from the downstream cytokine gene CCL14, and are represented as GeneID: 348249. [provided by RefSeq]

Other Designations: CC chemokine 3, MIP-1 delta, OTTHUMP00000163955, chemokine CC-2, leukotactin 1, macrophage inflammatory protein 5, small inducible cytokine subfamily A (Cys-Cys), member 15

Gene Pathway

[Chemokine signaling pathway](#) [Cytokine-cytokine receptor interaction](#)

Related Disease

[Asthma](#) [Asthma](#) [Bronchiolitis](#) [Viral Genetic Predisposition to Disease](#)
[Infant, Premature, Diseases](#) [Respiratory Syncytial Virus Infections](#) [Tobacco Use Disorder](#)

[服務條款](#) | [隱私權政策](#) | [著作及商標](#) | [網站地圖](#)

©2016 亞諾法生技股份有限公司 Abnova Corporation. 版權所有.