



SZABO SCANDIC

Part of Europa Biosite

Produktinformation



Forschungsprodukte & Biochemikalien



Zellkultur & Verbrauchsmaterial



Diagnostik & molekulare Diagnostik



Laborgeräte & Service

Weitere Information auf den folgenden Seiten!
See the following pages for more information!



Lieferung & Zahlungsart

siehe unsere [Liefer- und Versandbedingungen](#)

Zuschläge

- Mindermengenzuschlag
- Trockeneiszuschlag
- Gefahrgutzuschlag
- Expressversand

SZABO-SCANDIC HandelsgmbH

Quellenstraße 110, A-1100 Wien

T. +43(0)1 489 3961-0

F. +43(0)1 489 3961-7

mail@szabo-scandic.com

www.szabo-scandic.com

[linkedin.com/company/szaboscandic](https://www.linkedin.com/company/szaboscandic) 

SFTPB (Human) IP-WB Antibody Pair

Catalog # : H00006439-PW2

規格 : [1 Set]

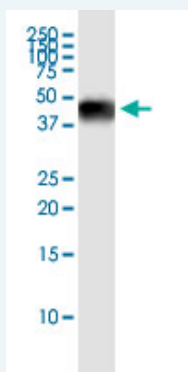
List All

Specification

Product Description: This IP-WB antibody pair set comes with one antibody for immunoprecipitation and another to detect the precipitated protein in western blot.

Reactivity: Human

Quality Control Testing: Immunoprecipitation-Western Blot (IP-WB)



Immunoprecipitation of SFTPB transfected lysate using rabbit polyclonal anti-SFTPB and Protein A Magnetic Bead ([U0007](#)), and immunoblotted with mouse purified polyclonal anti-SFTPB.

Supplied Product: Antibody pair set content:
 1. Antibody pair for IP: rabbit polyclonal anti-SFTPB (300 ul)
 2. Antibody pair for WB: mouse purified polyclonal anti-SFTPB (50 ug)

Storage Instruction: Store reagents of the antibody pair set at -20°C or lower. Please aliquot to avoid repeated freeze thaw cycle. Reagents should be returned to -20°C storage immediately after use.

Applications

Immunoprecipitation-Western Blot

 [Protocol Download](#)

Gene Information

Entrez GeneID: [6439](#)

Gene Name: SFTPB

Gene Alias: PSP-B, SFTB3, SFTP3, SMDP1, SP-B

Gene Description: surfactant protein B

Omim ID: [178640](#), [265120](#)

Gene Ontology: [Hyperlink](#)

Gene Summary: The SFTPB gene encodes the pulmonary-associated surfactant B

protein (SPB), an amphipathic surfactant protein essential for lung function and homeostasis after birth. Pulmonary surfactant is a lipid-rich material that prevents lung collapse by lowering surface tension at the air-liquid interface in the alveoli of lung. SPB enhances the rate of spreading and increases the stability of surfactant monolayers in vitro. Surfactant is composed of phospholipids and other surfactant-associated proteins (Clark et al., 1995 [PubMed 7644495]). See also SFTPA1 (MIM 178630), SFTPC (MIM 178620), and SFTPD (MIM 178635).[supplied by OMIM

Other Designations: Pulmonary surfactant-associated protein B, 18kD,surfactant, pulmonary-associated protein B

Related Disease

[alpha 1-Antitrypsin Deficiency](#) [Alpha-1-antitrypsin deficiency](#) [Anoxia](#) [Asthma](#) [Asthma Bronchiolitis, Viral](#) [Bronchopulmonary Dysplasia](#) [Carcinoma, Non-Small-Cell Lung](#) [Carcinoma, Small Cell](#) [Carcinoma, Squamous Cell](#) [Community-Acquired Infections](#) [Critical Illness](#) [Diseases in Twins](#) [Ductus Arteriosus, Patent](#) [Emphysema](#) [Genetic Predisposition to Disease](#) [Hypercapnia](#) [Hypertension, Pulmonary](#) [Infant, Premature, Diseases](#)

... see more

[服務條款](#) | [隱私權政策](#) | [著作及商標](#) | [網站地圖](#)

©2016 亞諾法生技股份有限公司 Abnova Corporation. 版權所有.