



SZABO SCANDIC

Part of Europa Biosite

Produktinformation



Forschungsprodukte & Biochemikalien



Zellkultur & Verbrauchsmaterial



Diagnostik & molekulare Diagnostik



Laborgeräte & Service

Weitere Information auf den folgenden Seiten!
See the following pages for more information!



Lieferung & Zahlungsart

siehe unsere [Liefer- und Versandbedingungen](#)

Zuschläge

- Mindermengenzuschlag
- Trockeneiszuschlag
- Gefahrgutzuschlag
- Expressversand

SZABO-SCANDIC HandelsgmbH

Quellenstraße 110, A-1100 Wien

T. +43(0)1 489 3961-0

F. +43(0)1 489 3961-7

mail@szabo-scandic.com

www.szabo-scandic.com

[linkedin.com/company/szaboscandic](https://www.linkedin.com/company/szaboscandic) 

SFTPC (Human) Matched Antibody Pair

Catalog # : H00006440-AP11

規格 : [1 Set]

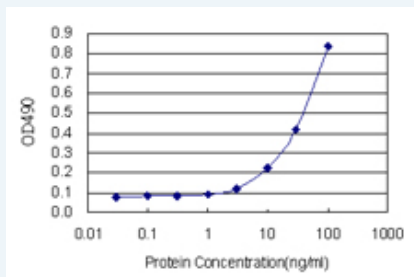
[List All](#)

Specification

Product Description: This antibody pair set comes with matched antibody pair to detect and quantify protein level of human SFTPC.

Reactivity: Human

Quality Control Testing: Standard curve using recombinant protein (H00006440-P01) as an analyte.



Sandwich ELISA detection sensitivity ranging from 3 ng/ml to 100 ng/ml.

Supplied Product: Antibody pair set content:
 1. Capture antibody: rabbit MaxPab® affinity purified polyclonal anti-SFTPC (100 ug)
 2. Detection antibody: mouse monoclonal anti-SFTPC, IgG2a Kappa (20 ug)
 *Reagents are sufficient for at least 1-2 x 96 well plates using recommended protocols.

Storage Instruction: Store reagents of the antibody pair set at -20°C or lower. Please aliquot to avoid repeated freeze thaw cycle. Reagents should be returned to -20°C storage immediately after use.

MSDS:  [Download](#)

Applications

ELISA Pair (Recombinant protein)

 [Protocol Download](#)

Gene Information

Entrez GeneID: [6440](#)

Gene Name: SFTPC

Gene Alias: PSP-C,SFTP2,SMDP2,SP-C

Gene Description: surfactant protein C

Omim ID: [178500](#), [178620](#), [265120](#), [610913](#)

Gene Ontology: [Hyperlink](#)

Gene Summary: The SFTPC gene encodes pulmonary-associated surfactant protein C (SPC), an extremely hydrophobic surfactant protein essential for lung function and homeostasis after birth. It is produced exclusively by type II alveolar epithelial cells in the lung. Pulmonary surfactant is a lipid-rich material that prevents lung collapse by lowering surface tension at the air-liquid interface in the alveoli of lung. Surfactant is composed of phospholipids and other surfactant-associated proteins (Clark and Clark, 2005 [PubMed 15927881]). See also SFTPA1 (MIM 178630), SFTPB (MIM 178640), and SFTPD (MIM 178635).[supplied by OMIM

Other Designations: pulmonary surfactant apoprotein-2 SP-C,surfactant, pulmonary-associated protein C

Related Disease

[Asthma](#) [Asthma](#) [Bronchiolitis, Viral](#) [Bronchopulmonary Dysplasia](#) [Fetal Membranes, Premature Rupture](#) [Genetic Predisposition to Disease](#) [Infant, Premature, Diseases](#) [Lung Diseases](#) [Lung Diseases, Interstitial](#) [Lung Diseases, Obstructive](#) [Premature Birth](#) [Pulmonary Alveolar Proteinosis](#) [Pulmonary Disease, Chronic Obstructive](#) [Pulmonary Emphysema](#) [Pulmonary Fibrosis](#) [Respiratory Distress Syndrome, Newborn](#) [Respiratory Syncytial Virus Infections](#)

[服務條款](#) | [隱私權政策](#) | [著作及商標](#) | [網站地圖](#)

©2016 亞諾法生技股份有限公司 Abnova Corporation. 版權所有.