



SZABO SCANDIC

Part of Europa Biosite

Produktinformation



Forschungsprodukte & Biochemikalien



Zellkultur & Verbrauchsmaterial



Diagnostik & molekulare Diagnostik



Laborgeräte & Service

Weitere Information auf den folgenden Seiten!
See the following pages for more information!



Lieferung & Zahlungsart

siehe unsere [Liefer- und Versandbedingungen](#)

Zuschläge

- Mindermengenzuschlag
- Trockeneiszuschlag
- Gefahrgutzuschlag
- Expressversand

SZABO-SCANDIC HandelsgmbH

Quellenstraße 110, A-1100 Wien

T. +43(0)1 489 3961-0

F. +43(0)1 489 3961-7

mail@szabo-scandic.com

www.szabo-scandic.com

[linkedin.com/company/szaboscandic](https://www.linkedin.com/company/szaboscandic) 

SFTPD (Human) Matched Antibody Pair

Catalog # : H00006441-AP41

規格 : [1 Set]

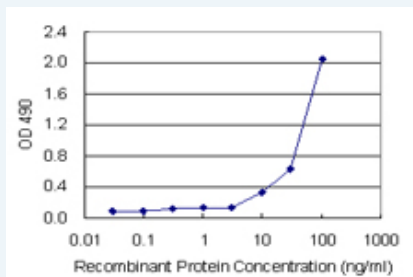
[List All](#)

Specification

Product Description: This antibody pair set comes with matched antibody pair to detect and quantify protein level of human SFTPD.

Reactivity: Human

Quality Control Testing: Standard curve using recombinant protein (H00006441-P01) as an analyte.



Sandwich ELISA detection sensitivity ranging from 10 ng/ml to 100 ng/ml.

Supplied Product: Antibody pair set content:
 1. Capture antibody: mouse monoclonal anti-SFTPD (100 ug)
 2. Detection antibody: biotinylated mouse monoclonal anti-SFTPD, IgG1 Kappa (50 ug)
 *Reagents are sufficient for at least 3-5 x 96 well plates using recommended protocols.

Storage Instruction: Store reagents of the antibody pair set at -20°C or lower. Please aliquot to avoid repeated freeze thaw cycle. Reagents should be returned to -20°C storage immediately after use.

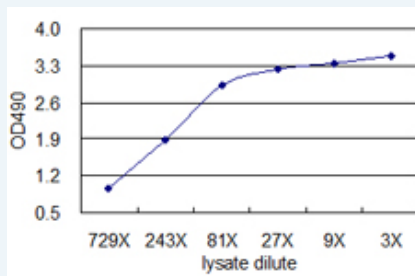
MSDS:  [Download](#)

Applications


ELISA Pair (Recombinant protein)

 [Protocol Download](#)

ELISA Pair (Transfected lysate)



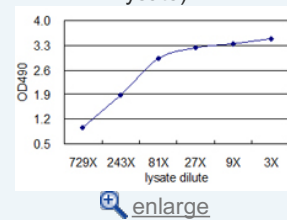
Standard curve using SFTPD 293T overexpression lysate (non-denatured) as an analyte. Sandwich ELISA detection sensitivity ranging from approximately 729x to 3x dilution of the SFTPD 293T overexpression lysate (non-denatured).

 [Protocol Download](#)

Application Image

ELISA Pair (Recombinant protein)

ELISA Pair (Transfected lysate)



Gene Information

Entrez GeneID: [6441](#)

Gene Name: SFTPD

Gene Alias: COLEC7,PSP-D,SFTP4,SP-D

Gene Description: surfactant protein D

Omim ID: [178635](#)

Gene Ontology: [Hyperlink](#)

Other Designations: OTTHUMP00000019944,collectin 7,pulmonary surfactant apoprotein,pulmonary surfactant-associated protein D,surfactant, pulmonary-associated protein D,surfactant-associated protein, pulmonary 4

Related Disease

[Adenocarcinoma](#) [Alzheimer Disease](#) [Arthritis, Rheumatoid](#) [Asthma](#) [Asthma](#) [Atherosclerosis](#) [Bronchiolitis, Viral](#) [Bronchopulmonary Dysplasia](#) [Cardiovascular Diseases](#) [Chronic Disease](#) [Colitis, Ulcerative](#) [Coronary Disease](#) [Crohn's disease](#) [Cystic Fibrosis](#) [Diabetes Mellitus, Type 2](#) [Ductus Arteriosus, Patent](#) [Edema](#) [Esophageal Neoplasms](#) [Genetic Predisposition to Disease](#)

... see more

[服務條款](#) | [隱私權政策](#) | [著作及商標](#) | [網站地圖](#)

©2016 亞諾法生技股份有限公司 Abnova Corporation. 版權所有.