



SZABO SCANDIC

Part of Europa Biosite

Produktinformation



Forschungsprodukte & Biochemikalien



Zellkultur & Verbrauchsmaterial



Diagnostik & molekulare Diagnostik



Laborgeräte & Service

Weitere Information auf den folgenden Seiten!
See the following pages for more information!



Lieferung & Zahlungsart

siehe unsere [Liefer- und Versandbedingungen](#)

Zuschläge

- Mindermengenzuschlag
- Trockeneiszuschlag
- Gefahrgutzuschlag
- Expressversand

SZABO-SCANDIC HandelsgmbH

Quellenstraße 110, A-1100 Wien

T. +43(0)1 489 3961-0

F. +43(0)1 489 3961-7

mail@szabo-scandic.com

www.szabo-scandic.com

[linkedin.com/company/szaboscandic](https://www.linkedin.com/company/szaboscandic) 

SGCG (Human) IP-WB Antibody Pair

Catalog # : H00006445-PW2

規格 : [1 Set]

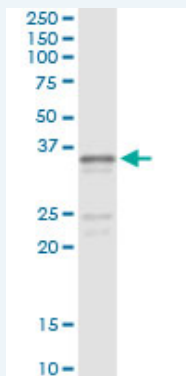
[List All](#)

Specification

Product Description: This IP-WB antibody pair set comes with one antibody for immunoprecipitation and another to detect the precipitated protein in western blot.

Reactivity: Human

Quality Control Testing: Immunoprecipitation-Western Blot (IP-WB)



Immunoprecipitation of SGCG transfected lysate using mouse monoclonal anti-SGCG and Protein A Magnetic Bead ([U0007](#)), and immunoblotted with rabbit polyclonal anti-SGCG.

Supplied Product: Antibody pair set content:
1. Antibody pair for IP: mouse monoclonal anti-SGCG (300 ug)
2. Antibody pair for WB: rabbit polyclonal anti-SGCG (50 ul)

Storage Instruction: Store reagents of the antibody pair set at -20°C or lower. Please aliquot to avoid repeated freeze thaw cycle. Reagents should be returned to -20°C storage immediately after use.

MSDS:  [Download](#)

Applications

Immunoprecipitation-Western Blot

 [Protocol Download](#)

Gene Information

Entrez GeneID: [6445](#)

Gene Name: SGCG

Gene Alias: A4,DAGA4,DMDA,DMDA1,LGMD2C,MAM,MGC130048,SCARMD2,SCG3,TYPE

Gene Description: sarcoglycan, gamma (35kDa dystrophin-associated glycoprotein)

Omim ID: [253700](#), [608896](#)

Gene Ontology: [Hyperlink](#)

Gene Summary: This gene encodes gamma-sarcoglycan, one of several sarcolemmal transmembrane glycoproteins that interact with dystrophin. The dystrophin-glycoprotein complex (DGC) spans the sarcolemma and is comprised of dystrophin, syntrophin, alpha- and beta-dystroglycans and sarcoglycans. The DGC provides a structural link between the subsarcolemmal cytoskeleton and the extracellular matrix of muscle cells. Defects in the encoded protein can lead to early onset autosomal recessive muscular dystrophy, in particular limb-girdle muscular dystrophy, type 2C (LGMD2C). [provided by RefSeq]

Other Designations: 35kD dystrophin-associated glycoprotein, OTTHUMP00000018112, gamma sarcoglycan, sarcoglycan, gamma (35kD dystrophin-associated glycoprotein)

Gene Pathway

[Arrhythmogenic right ventricular cardiomyopathy \(ARVC\)](#)
[Hypertrophic cardiomyopathy \(HCM\)](#)

Related Disease

[Muscular Dystrophies, Limb-Girdle Tobacco Use Disorder](#)

[服務條款](#) | [隱私權政策](#) | [著作及商標](#) | [網站地圖](#)

©2016 亞諾法生技股份有限公司 Abnova Corporation. 版權所有.