



SZABO SCANDIC

Part of Europa Biosite

Produktinformation



Forschungsprodukte & Biochemikalien



Zellkultur & Verbrauchsmaterial



Diagnostik & molekulare Diagnostik



Laborgeräte & Service

Weitere Information auf den folgenden Seiten!
See the following pages for more information!



Lieferung & Zahlungsart

siehe unsere [Liefer- und Versandbedingungen](#)

Zuschläge

- Mindermengenzuschlag
- Trockeneiszuschlag
- Gefahrgutzuschlag
- Expressversand

SZABO-SCANDIC HandelsgmbH

Quellenstraße 110, A-1100 Wien

T. +43(0)1 489 3961-0

F. +43(0)1 489 3961-7

mail@szabo-scandic.com

www.szabo-scandic.com

[linkedin.com/company/szaboscandic](https://www.linkedin.com/company/szaboscandic) 

SULT1E1 (Human) Matched Antibody Pair

Catalog # : H00006783-AP21

規格 : [1 Set]

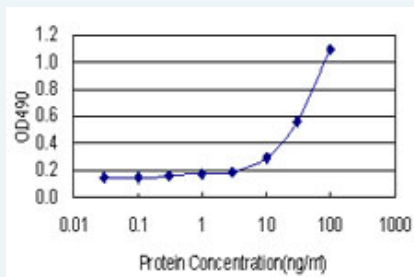
[List All](#)

Specification

Product Description: This antibody pair set comes with matched antibody pair to detect and quantify protein level of human SULT1E1.

Reactivity: Human

Quality Control Testing: Standard curve using recombinant protein (H00006783-P01) as an analyte.



Sandwich ELISA detection sensitivity ranging from 3 ng/ml to 100 ng/ml.

Supplied Product: Antibody pair set content:
 1. Capture antibody: rabbit MaxPab® affinity purified polyclonal anti-SULT1E1 (100 ug)
 2. Detection antibody: mouse purified polyclonal anti-SULT1E1 (20 ug)
 *Reagents are sufficient for at least 1-2 x 96 well plates using recommended protocols.

Storage Instruction: Store reagents of the antibody pair set at -20°C or lower. Please aliquot to avoid repeated freeze thaw cycle. Reagents should be returned to -20°C storage immediately after use.

MSDS:  [Download](#)

Applications

ELISA Pair (Recombinant protein)

 [Protocol Download](#)

Gene Information

Entrez GeneID: [6783](#)

Gene Name: SULT1E1

Gene Alias: EST,EST-1,MGC34459,STE

Gene Description: sulfotransferase family 1E, estrogen-preferring, member 1

Omim ID: [600043](#)

Gene Ontology: [Hyperlink](#)

Gene Summary: Sulfotransferase enzymes catalyze the sulfate conjugation of many hormones, neurotransmitters, drugs, and xenobiotic compounds. These cytosolic enzymes are different in their tissue distributions and substrate specificities. The gene structure (number and length of exons) is similar among family members. This gene encodes a protein that transfers a sulfo moiety to and from estrone, which may control levels of estrogen receptors. [provided by RefSeq]

Other Designations: estrogen sulfotransferase, estrone sulfotransferase, sulfotransferase, estrogen-preferring

Gene Pathway

[Androgen and estrogen metabolism](#) [Sulfur metabolism](#)

Related Disease

[Breast cancer](#) [Breast Neoplasms](#) [Carcinoma, Ductal, Breast](#) [Carcinoma, Lobular](#) [Cryptorchidism](#) [Endometrial Neoplasms](#) [Genetic Predisposition to Disease](#) [Hearing Loss](#) [Kidney Failure, Chronic](#) [Neoplasms, Germ Cell and Embryonal](#) [Seminoma](#) [Testicular Neoplasms](#) [Tobacco Use Disorder](#)

[服務條款](#) | [隱私權政策](#) | [著作及商標](#) | [網站地圖](#)

©2016 亞諾法生技股份有限公司 Abnova Corporation. 版權所有.