



SZABO SCANDIC

Part of Europa Biosite

Produktinformation



Forschungsprodukte & Biochemikalien



Zellkultur & Verbrauchsmaterial



Diagnostik & molekulare Diagnostik



Laborgeräte & Service

Weitere Information auf den folgenden Seiten!
See the following pages for more information!



Lieferung & Zahlungsart

siehe unsere [Liefer- und Versandbedingungen](#)

Zuschläge

- Mindermengenzuschlag
- Trockeneiszuschlag
- Gefahrgutzuschlag
- Expressversand

SZABO-SCANDIC HandelsgmbH

Quellenstraße 110, A-1100 Wien

T. +43(0)1 489 3961-0

F. +43(0)1 489 3961-7

mail@szabo-scandic.com

www.szabo-scandic.com

[linkedin.com/company/szaboscandic](https://www.linkedin.com/company/szaboscandic) 

TALDO1 (Human) IP-WB Antibody Pair

Catalog # : H00006888-PW1

規格 : [1 Set]

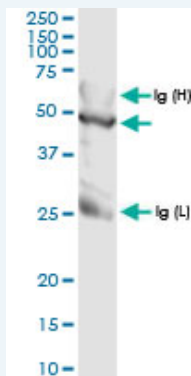
List All

Specification

Product Description: This IP-WB antibody pair set comes with one antibody for immunoprecipitation and another to detect the precipitated protein in western blot.

Reactivity: Human

Quality Control Testing: Immunoprecipitation-Western Blot (IP-WB)



Immunoprecipitation of TALDO1 transfected lysate using rabbit polyclonal anti-TALDO1 and Protein A Magnetic Bead ([U0007](#)), and immunoblotted with rabbit polyclonal anti-TALDO1.

Supplied Product: Antibody pair set content:
1. Antibody pair for IP: rabbit polyclonal anti-TALDO1 (300 ul)
2. Antibody pair for WB: rabbit polyclonal anti-TALDO1 (50 ul)

Storage Instruction: Store reagents of the antibody pair set at -20°C or lower. Please aliquot to avoid repeated freeze thaw cycle. Reagents should be returned to -20°C storage immediately after use.

MSDS:  [Download](#)

Applications

Immunoprecipitation-Western Blot

 [Protocol Download](#)

Gene Information

Entrez GeneID: [6888](#)

Gene Name: TALDO1

Gene Alias: TAL, TAL-H, TALDOR, TALH

Gene Description: transaldolase 1

Omim ID: [602063](#), [606003](#)

Gene Ontology: [Hyperlink](#)

Application Image

Immunoprecipitation-Western Blot

Gene Summary: Transaldolase 1 is a key enzyme of the nonoxidative pentose phosphate pathway providing ribose-5-phosphate for nucleic acid synthesis and NADPH for lipid biosynthesis. This pathway can also maintain glutathione at a reduced state and thus protect sulfhydryl groups and cellular integrity from oxygen radicals. The functional gene of transaldolase 1 is located on chromosome 11 and a pseudogene is identified on chromosome 1 but there are conflicting map locations. The second and third exon of this gene were developed by insertion of a retrotransposable element. This gene is thought to be involved in multiple sclerosis. [provided by RefSeq]

Other Designations: dihydroxyacetone transferase, glycerone transferase

Gene Pathway

[Biosynthesis of alkaloids derived from shikimate pathway](#)
[Biosynthesis of phenylpropanoids](#) [Biosynthesis of plant hormones](#) [Metabolic pathways](#)
[Pentose phosphate pathway](#)

Related Disease

[Carcinoma, Squamous Cell](#) [Genetic Predisposition to Disease](#) [Head and Neck Neoplasms](#)

[服務條款](#) | [隱私權政策](#) | [著作及商標](#) | [網站地圖](#)

©2016 亞諾法生技股份有限公司 Abnova Corporation. 版權所有.