



SZABO SCANDIC

Part of Europa Biosite

Produktinformation



Forschungsprodukte & Biochemikalien



Zellkultur & Verbrauchsmaterial



Diagnostik & molekulare Diagnostik



Laborgeräte & Service

Weitere Information auf den folgenden Seiten!
See the following pages for more information!



Lieferung & Zahlungsart

siehe unsere [Liefer- und Versandbedingungen](#)

Zuschläge

- Mindermengenzuschlag
- Trockeneiszuschlag
- Gefahrgutzuschlag
- Expressversand

SZABO-SCANDIC HandelsgmbH

Quellenstraße 110, A-1100 Wien

T. +43(0)1 489 3961-0

F. +43(0)1 489 3961-7

mail@szabo-scandic.com

www.szabo-scandic.com

[linkedin.com/company/szaboscandic](https://www.linkedin.com/company/szaboscandic) 

TARBP2 (Human) Matched Antibody Pair

Catalog # : H00006895-AP11

規格 : [1 Set]

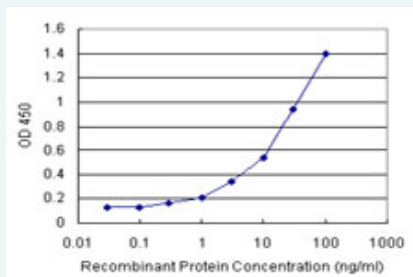
[List All](#)

Specification

Product Description: This antibody pair set comes with matched antibody pair to detect and quantify protein level of human TARBP2.

Reactivity: Human

Quality Control Testing: Standard curve using recombinant protein (H00006895-P01) as an analyte.



Sandwich ELISA detection sensitivity ranging from 0.3 ng/ml to 100 ng/ml.

Supplied Product: Antibody pair set content:
 1. Capture antibody: rabbit MaxPab® affinity purified polyclonal anti-TARBP2 (100 ug)
 2. Detection antibody: mouse monoclonal anti-TARBP2, IgG1 Kappa (20 ug)
 *Reagents are sufficient for at least 1-2 x 96 well plates using recommended protocols.

Storage Instruction: Store reagents of the antibody pair set at -20°C or lower. Please aliquot to avoid repeated freeze thaw cycle. Reagents should be returned to -20°C storage immediately after use.

MSDS:  [Download](#)

Applications

ELISA Pair (Recombinant protein)

 [Protocol Download](#)

Gene Information

Entrez GeneID: [6895](#)

Gene Name: TARBP2

Gene Alias: LOQS,TRBP,TRBP1,TRBP2

Gene Description: TAR (HIV-1) RNA binding protein 2

Omim ID: [605053](#)

Gene Ontology: [Hyperlink](#)

Application Image

ELISA Pair (Recombinant protein)

Gene Summary: HIV-1, the causative agent of acquired immunodeficiency syndrome (AIDS), contains an RNA genome that produces a chromosomally integrated DNA during the replicative cycle. Activation of HIV-1 gene expression by the transactivator Tat is dependent on an RNA regulatory element (TAR) located downstream of the transcription initiation site. The protein encoded by this gene binds between the bulge and the loop of the HIV-1 TAR RNA regulatory element and activates HIV-1 gene expression in synergy with the viral Tat protein. Alternative splicing results in multiple transcript variants encoding different isoforms. This gene also has a pseudogene. [provided by RefSeq]

Other Designations: TAR (HIV) RNA binding protein 2, TAR (HIV) RNA-binding protein 2, TAR (HIV) RNA-binding protein TRBP1, TAR RNA binding protein 2, TAR RNA-binding protein 2, trans-activation responsive RNA-binding protein

Related Disease

[Adenocarcinoma](#) [Carcinoma, Renal Cell](#) [Carcinoma, Squamous Cell](#)
[Esophageal Neoplasms](#) [Genetic Predisposition to Disease](#) [Kidney Neoplasms](#)
[Neoplasm Recurrence, Local](#)

[服務條款](#) | [隱私權政策](#) | [著作及商標](#) | [網站地圖](#)

©2016 亞諾法生技股份有限公司 Abnova Corporation. 版權所有.