



# SZABO SCANDIC

Part of Europa Biosite

## Produktinformation



Forschungsprodukte & Biochemikalien



Zellkultur & Verbrauchsmaterial



Diagnostik & molekulare Diagnostik



Laborgeräte & Service

Weitere Information auf den folgenden Seiten!  
See the following pages for more information!



### Lieferung & Zahlungsart

siehe unsere [Liefer- und Versandbedingungen](#)

### Zuschläge

- Mindermengenzuschlag
- Trockeneiszuschlag
- Gefahrgutzuschlag
- Expressversand

### SZABO-SCANDIC HandelsgmbH

Quellenstraße 110, A-1100 Wien

T. +43(0)1 489 3961-0

F. +43(0)1 489 3961-7

[mail@szabo-scandic.com](mailto:mail@szabo-scandic.com)

[www.szabo-scandic.com](http://www.szabo-scandic.com)

[linkedin.com/company/szaboscandic](https://www.linkedin.com/company/szaboscandic) 

## TBCE (Human) IP-WB Antibody Pair

Catalog # : H00006905-PW1

規格 : [ 1 Set ]

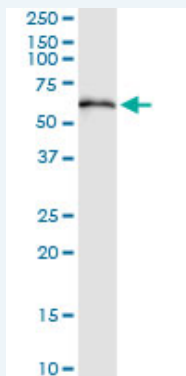
[List All](#)

### Specification

**Product Description:** This IP-WB antibody pair set comes with one antibody for immunoprecipitation and another to detect the precipitated protein in western blot.

**Reactivity:** Human

**Quality Control Testing:** Immunoprecipitation-Western Blot (IP-WB)



Immunoprecipitation of TBCE transfected lysate using rabbit polyclonal anti-TBCE and Protein A Magnetic Bead (U0007), and immunoblotted with mouse purified polyclonal anti-TBCE.

**Supplied Product:** Antibody pair set content:  
 1. Antibody pair for IP: rabbit polyclonal anti-TBCE (300 ul)  
 2. Antibody pair for WB: mouse purified polyclonal anti-TBCE (50 ug)

**Storage Instruction:** Store reagents of the antibody pair set at -20°C or lower. Please aliquot to avoid repeated freeze thaw cycle. Reagents should be returned to -20°C storage immediately after use.

**MSDS:**  [Download](#)

### Applications

**Immunoprecipitation-Western Blot**

 [Protocol Download](#)

### Gene Information

**Entrez GeneID:** [6905](#)

**Gene Name:** TBCE

**Gene Alias:** HRD,KCS,KCS1,pac2

**Gene Description:** tubulin folding cofactor E

**Omim ID:** [241410](#), [244460](#), [604934](#)

**Gene Ontology:** [Hyperlink](#)

### Application Image

Immunoprecipitation-Western Blot

---

**Gene Summary:** Cofactor E is one of four proteins (cofactors A, D, E, and C) involved in the pathway leading to correctly folded beta-tubulin from folding intermediates. Cofactors A and D are believed to play a role in capturing and stabilizing beta-tubulin intermediates in a quasi-native confirmation. Cofactor E binds to the cofactor D/beta-tubulin complex; interaction with cofactor C then causes the release of beta-tubulin polypeptides that are committed to the native state. Two transcript variants encoding the same protein have been found for this gene. [provided by RefSeq]

---

**Other Designations:** OTTHUMP00000037906,beta-tubulin cofactor E,tubulin-specific chaperone e

---

#### **Related Disease**

---

[Tobacco Use Disorder](#)

---

[服務條款](#) | [隱私權政策](#) | [著作及商標](#) | [網站地圖](#)

©2016 亞諾法生技股份有限公司 Abnova Corporation. 版權所有.