



# SZABO SCANDIC

Part of Europa Biosite

## Produktinformation



Forschungsprodukte & Biochemikalien



Zellkultur & Verbrauchsmaterial



Diagnostik & molekulare Diagnostik



Laborgeräte & Service

Weitere Information auf den folgenden Seiten!  
See the following pages for more information!



### Lieferung & Zahlungsart

siehe unsere [Liefer- und Versandbedingungen](#)

### Zuschläge

- Mindermengenzuschlag
- Trockeneiszuschlag
- Gefahrgutzuschlag
- Expressversand

### SZABO-SCANDIC HandelsgmbH

Quellenstraße 110, A-1100 Wien

T. +43(0)1 489 3961-0

F. +43(0)1 489 3961-7

[mail@szabo-scandic.com](mailto:mail@szabo-scandic.com)

[www.szabo-scandic.com](http://www.szabo-scandic.com)

[linkedin.com/company/szaboscandic](https://www.linkedin.com/company/szaboscandic) 

## TFCP2 (Human) Matched Antibody Pair

Catalog # : H00007024-AP51

規格 : [ 1 Set ]

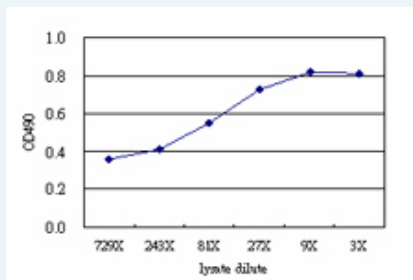
[List All](#)

### Specification

**Product Description:** This antibody pair set comes with matched antibody pair to detect and quantify protein level of human TFCP2.

**Reactivity:** Human

**Quality Control Testing:** Standard curve using TFCP2 293T overexpression lysate (non-denatured) as an analyte.



Sandwich ELISA detection sensitivity ranging from approximately 81x to 3x dilution of the TFCP2 293T overexpression lysate (non-denatured).

**Supplied Product:** Antibody pair set content:  
 1. Capture antibody: mouse monoclonal anti-TFCP2 (100 ug)  
 2. Detection antibody: rabbit purified polyclonal anti-TFCP2 (50 ug)  
 \*Reagents are sufficient for at least 3-5 x 96 well plates using recommended protocols.

**Storage Instruction:** Store reagents of the antibody pair set at -20°C or lower. Please aliquot to avoid repeated freeze thaw cycle. Reagents should be returned to -20°C storage immediately after use.

**MSDS:**  [Download](#)

### Applications

ELISA Pair (Transfected lysate)

 [Protocol Download](#)

### Gene Information

**Entrez GeneID:** [7024](#)

**Gene Name:** TFCP2

**Gene Alias:** CP2,LBP-1C,LSF,SEF,TFCP2C

**Gene Description:** transcription factor CP2

**Omim ID:** [189889](#)

**Gene Ontology:** [Hyperlink](#)

### Application Image

ELISA Pair (Transfected lysate)

**Other** SAA3 enhancer factor,Transcription factor CP2, alpha globin

**Designations:**

---

**Related Disease**

---

[Alzheimer Disease](#) [Alzheimer disease](#) [Cardiovascular Diseases](#) [Depressive Disorder, Major](#)  
[Diabetes Complications](#) [Genetic Predisposition to Disease](#) [Metabolic Syndrome X](#)  
[Neoplasms](#) [Osteoporosis](#)

---

[服務條款](#) | [隱私權政策](#) | [著作及商標](#) | [網站地圖](#)

©2016 亞諾法生技股份有限公司 Abnova Corporation. 版權所有.