



# SZABO SCANDIC

Part of Europa Biosite

## Produktinformation



Forschungsprodukte & Biochemikalien



Zellkultur & Verbrauchsmaterial



Diagnostik & molekulare Diagnostik



Laborgeräte & Service

Weitere Information auf den folgenden Seiten!  
See the following pages for more information!



### Lieferung & Zahlungsart

siehe unsere [Liefer- und Versandbedingungen](#)

### Zuschläge

- Mindermengenzuschlag
- Trockeneiszuschlag
- Gefahrgutzuschlag
- Expressversand

### SZABO-SCANDIC Handels GmbH

Quellenstraße 110, A-1100 Wien

T. +43(0)1 489 3961-0

F. +43(0)1 489 3961-7

[mail@szabo-scandic.com](mailto:mail@szabo-scandic.com)

[www.szabo-scandic.com](http://www.szabo-scandic.com)

[linkedin.com/company/szaboscandic](https://www.linkedin.com/company/szaboscandic) 

## TRAF6 (Human) IP-WB Antibody Pair

Catalog # : H00007189-PW1

規格 : [ 1 Set ]

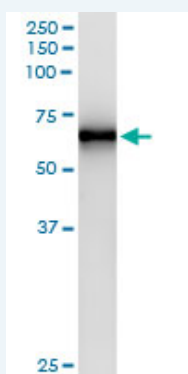
[List All](#)

### Specification

**Product Description:** This IP-WB antibody pair set comes with one antibody for immunoprecipitation and another to detect the precipitated protein in western blot.

**Reactivity:** Human

**Quality Control Testing:** Immunoprecipitation-Western Blot (IP-WB)



Immunoprecipitation of TRAF6 transfected lysate using rabbit polyclonal anti-TRAF6 and Protein A Magnetic Bead ([U0007](#)), and immunoblotted with mouse polyclonal anti-TRAF6.


**Supplied Product:** Antibody pair set content:  
1. Antibody pair for IP: rabbit polyclonal anti-TRAF6 (300 ul)  
2. Antibody pair for WB: mouse polyclonal anti-TRAF6 (50 ul)

**Storage Instruction:** Store reagents of the antibody pair set at -20°C or lower. Please aliquot to avoid repeated freeze thaw cycle. Reagents should be returned to -20°C storage immediately after use.

**MSDS:**  [Download](#)

### Applications

Immunoprecipitation-Western Blot

 [Protocol Download](#)

### Gene Information

**Entrez GeneID:** [7189](#)

**Gene Name:** TRAF6

**Gene Alias:** MGC:3310,RNF85

**Gene Description:** TNF receptor-associated factor 6

**Omim ID:** [602355](#)

**Gene Ontology:** [Hyperlink](#)

### Application Image

Immunoprecipitation-Western Blot

**Gene Summary:** The protein encoded by this gene is a member of the TNF receptor associated factor (TRAF) protein family. TRAF proteins are associated with, and mediate signal transduction from members of the TNF receptor superfamily. This protein mediates the signaling not only from the members of the TNF receptor superfamily, but also from the members of the Toll/IL-1 family. Signals from receptors such as CD40, TNFSF11/RANCE and IL-1 have been shown to be mediated by this protein. This protein also interacts with various protein kinases including IRAK1/IRAK, SRC and PKCzeta, which provides a link between distinct signaling pathways. This protein functions as a signal transducer in the NF-kappaB pathway that activates I kappaB kinase (IKK) in response to proinflammatory cytokines. The interaction of this protein with UBE2N/UBC13, and UBE2V1/UEV1A, which are ubiquitin conjugating enzymes catalyzing the formation of polyubiquitin chains, has been found to be required for IKK activation by this protein. Two alternatively spliced transcript variants encoding identical proteins have been reported. [provided by RefSeq]

**Other** -  
**Designations:**

#### Gene Pathway

[Endocytosis](#) [MAPK signaling pathway](#) [Neurotrophin signaling pathway](#) [Pathways in cancer](#) [Small cell lung cancer](#) [Toll-like receptor signaling pathway](#) [Ubiquitin mediated proteolysis](#)

#### Related Disease

[Alzheimer Disease](#) [Alzheimer disease](#) [Arthritis, Rheumatoid](#) [Asthma](#) [Carcinoma](#) [Cardiovascular Diseases](#) [Chronic Disease](#) [Colitis, Ulcerative](#) [Crohn Disease](#) [Crohn's disease](#) [Diabetes Complications](#) [Diabetes Mellitus, Type 2](#) [Edema](#) [Genetic Predisposition to Disease](#) [Hematologic Diseases](#) [Hepatitis C](#) [HIV Infections](#) [Hodgkin Disease](#) [Hypersensitivity](#)

... see more